

ARCHITECTURAL **GRATES + DRAINS**



65TRi25

Linear Drainage System

Stormtech is the only linear drainage system available with full
Greentag and Watermark certification across our complete product range.

Telephone 1300 653 403 | **Web** stormtech.com.au





ARCHITECTURAL
GRATES + DRAINS



65TRi25

Linear Drainage System



The 65TR25 is a standard style grate featuring a 3mm wire/5mm gap.

The 65TRi25 is a modular drainage kit with stainless steel grate(s), stainless steel drainage channel and fittings.

All components are manufactured from 316 marine grade stainless steel.

Please note that our TR grates have a non finished finish.

Refer to AS3500 for outlet pipe sizes specific to your installation.

Code 65TRi25

Range 65

Grate Style TR

Category Modular Kits

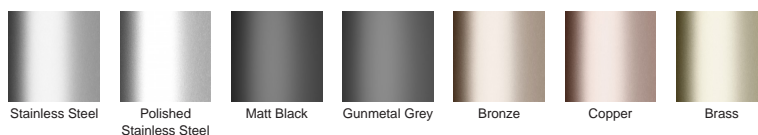
Channel Material Stainless Steel

Steel Grade 316

SPECIFICATIONS + DIMENSIONS

Channel Width	72mm
Channel Depth	27mm
Length(s)	900mm 1000mm 1200mm 1500mm 1800mm 1900mm 2000mm
Outlet Size	DN50

STORMTECH COLOUR FINISHES



Electroplate finishes subject to natural variation with time and local environment. Factors such as pools/surf beaches may require electropolishing. Contact us for suitability.

PRODUCT APPLICATIONS

Bathroom Drainage	Hospitality Drainage
Aged / Health Care Drainage	Paved Area Drainage
Balcony Drainage	Shower Drainage
Commercial Drainage	Multi-Residential Drainage
Courtyard / Patio Drainage	Special Needs Drainage
Pool and Spa Area Drainage	Threshold Drainage

Copyright © Stormtech Pty Ltd. Patent 733361. Drawings not to scale, please use dimensions shown.



Visit **stormtech.com.au**
for tools + inspiration.

Phone **1300 653 403**

Email **info@stormtech.com.au**

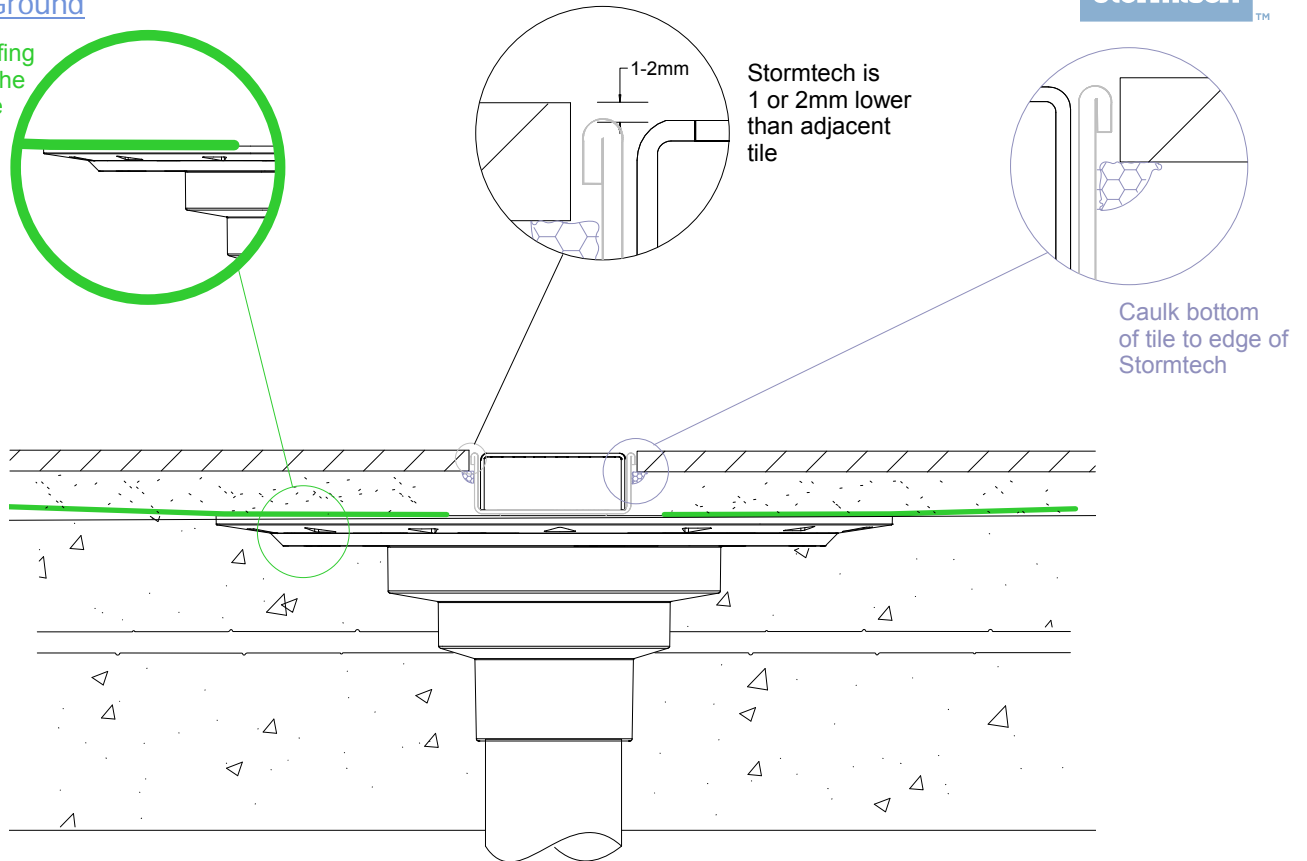
65i25 Concrete Floor or Deck

For 65ARi25, 65MNDi25, 65PHi25, 65PSi25, 65TRi25, and 65TRTi25.

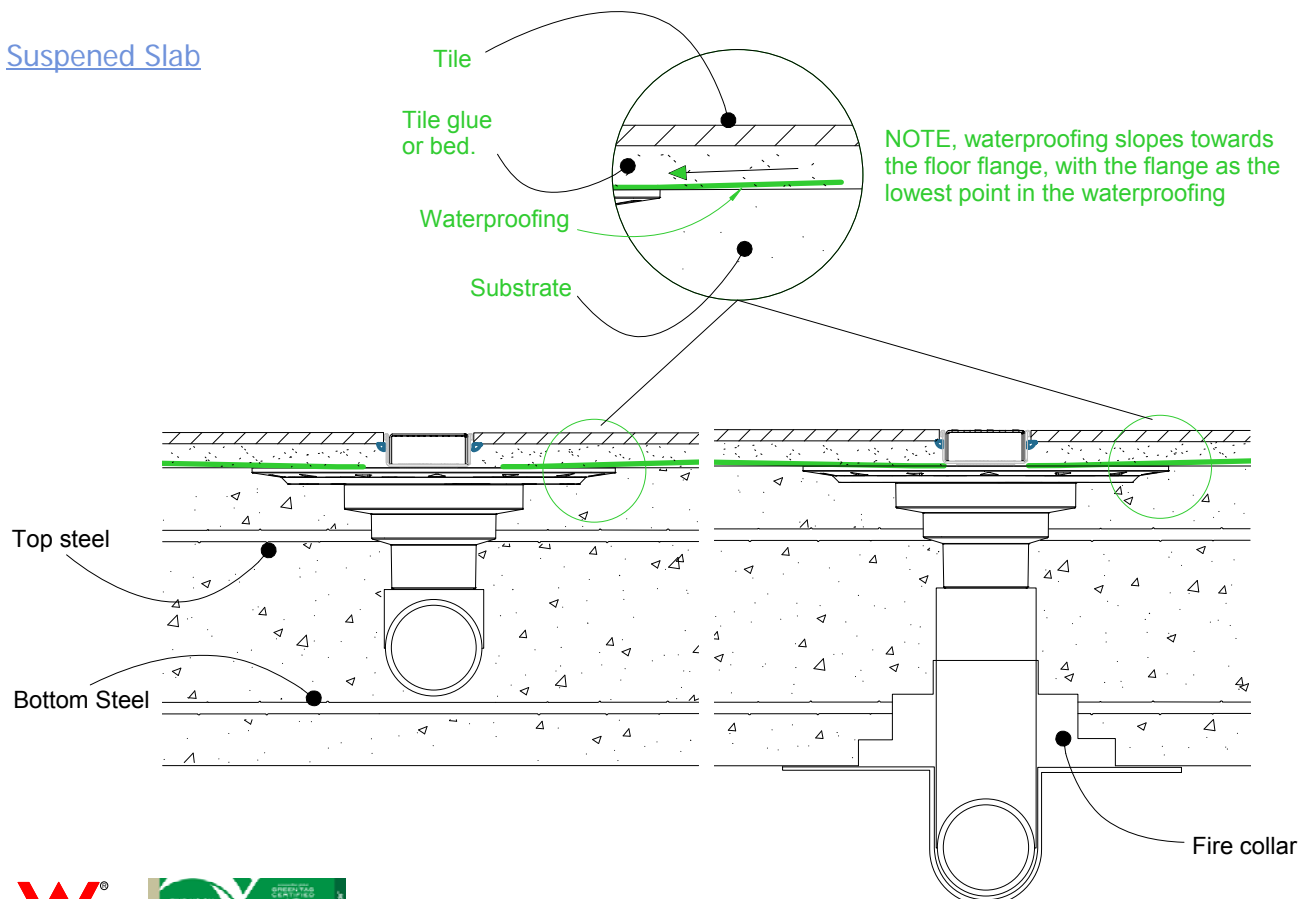


Slab on Ground

Waterproofing is fixed to the floor flange



Suspended Slab

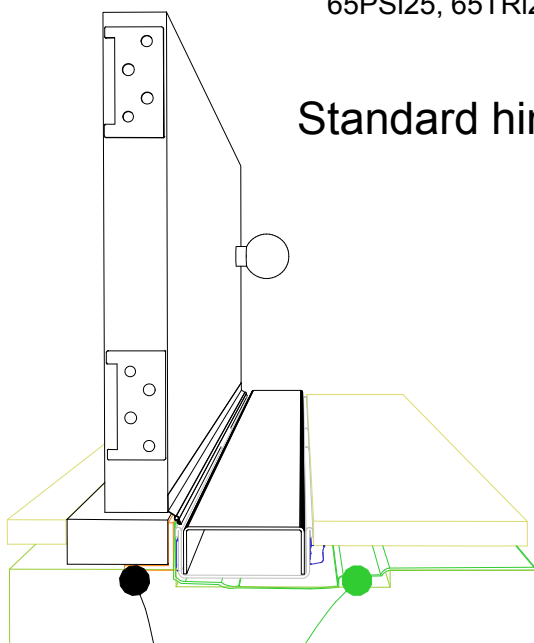


65i25 Threshold installation suggestion

For 65ARi25, 65MNDi25, 65PHi25,
65PSi25, 65TRi25, and 65TRTi25.



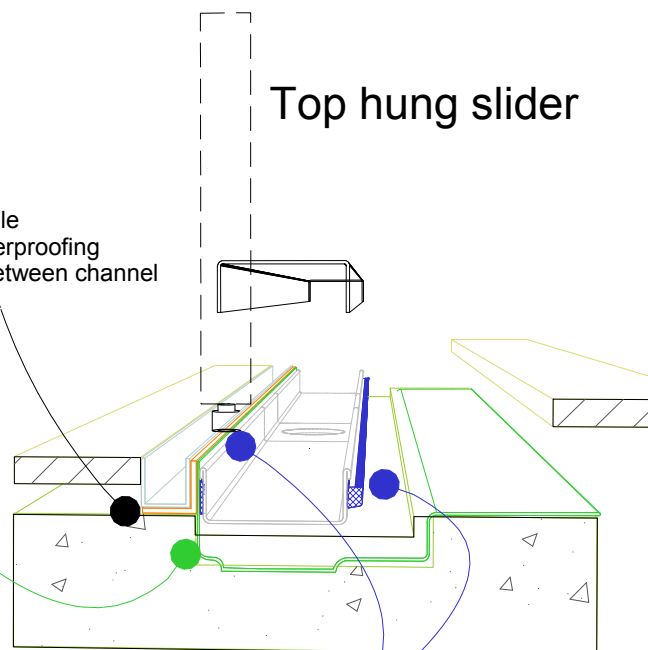
Standard hinged door



Aluminium angle
to support waterproofing
and junction between channel
and door sill.

Waterproofing

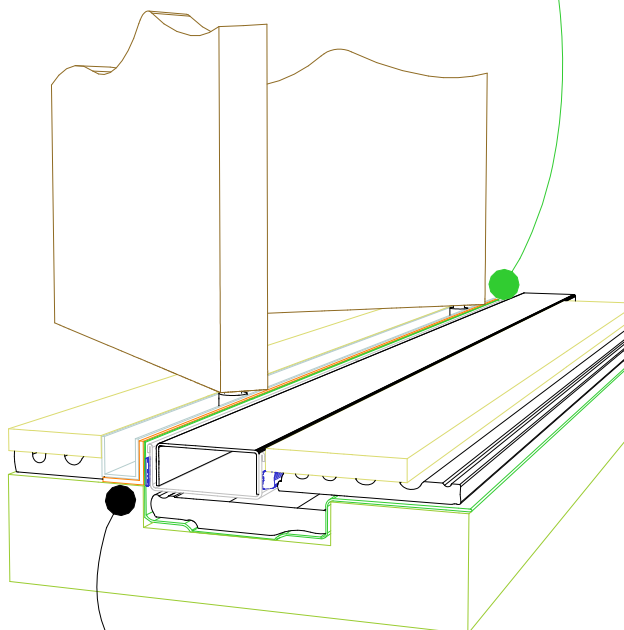
Top hung slider



Aluminium angle
to support waterproofing
and junction between channel
and door track.

For all types of threshold
installation ensure both sides
of the channel are sealed
before laying tile.

Bi-fold door



Aluminium angle
to support waterproofing
and junction between channel
and door track.

**NOTE, ALWAYS ensure the
waterproofing is completed
before laying the Stormtech.**

NOTE, ensure weather strip
is used on the appropriate
side of the door to ensure
drafts and moisture are
minimised.

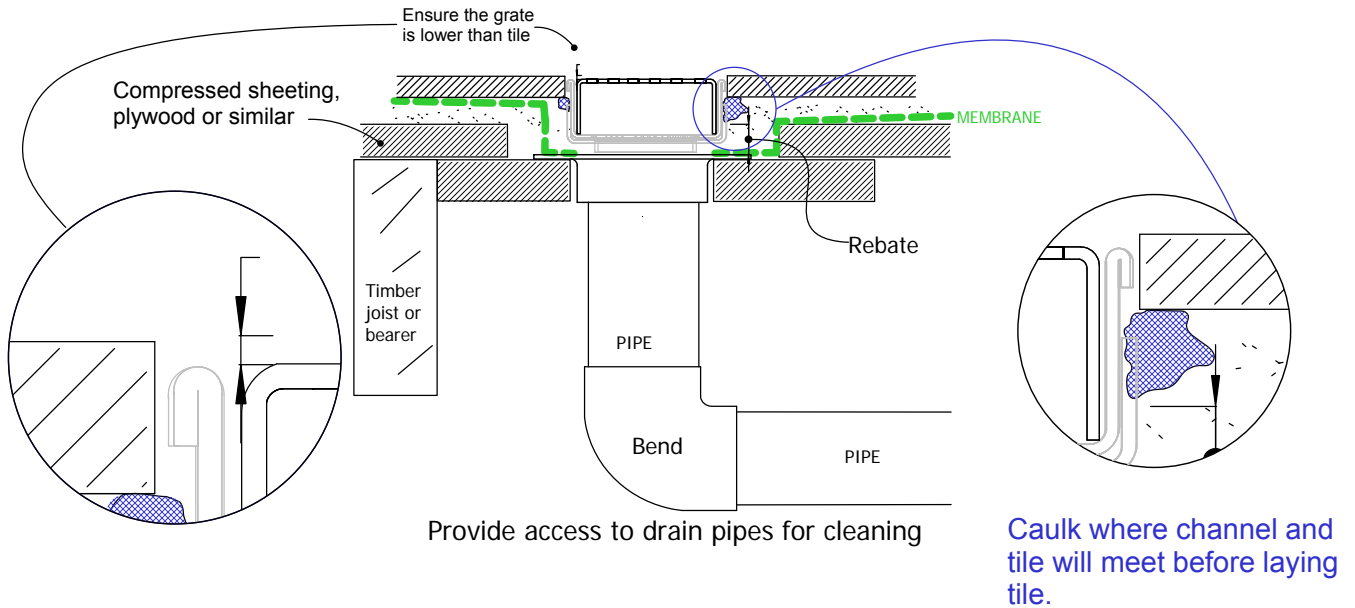


65i25 TIMBER FLOOR/DECK

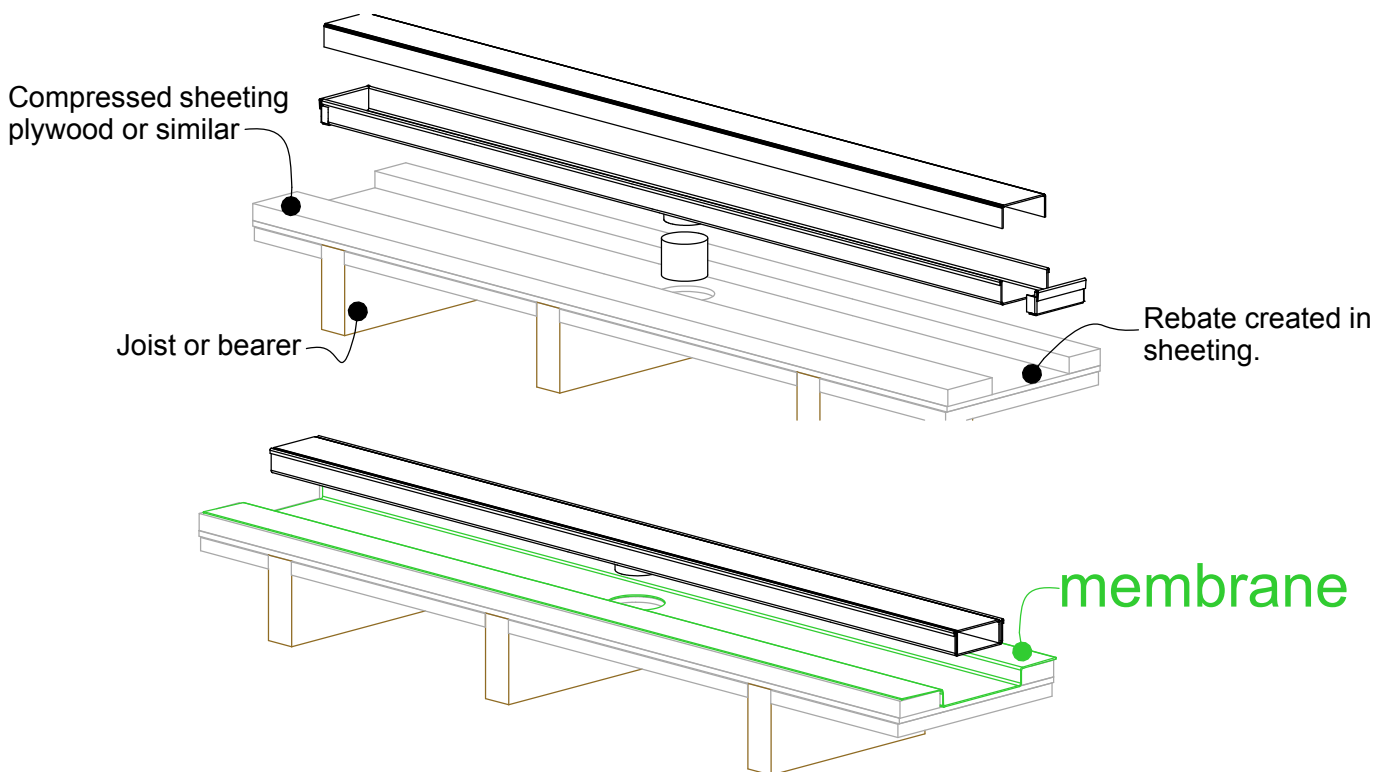
For 65ARi25, 65MNDi25, 65PHi25,
65PSi25, 65TRi25, and 65TRTi25.



When 65i25 is running parallel to joist/bearer



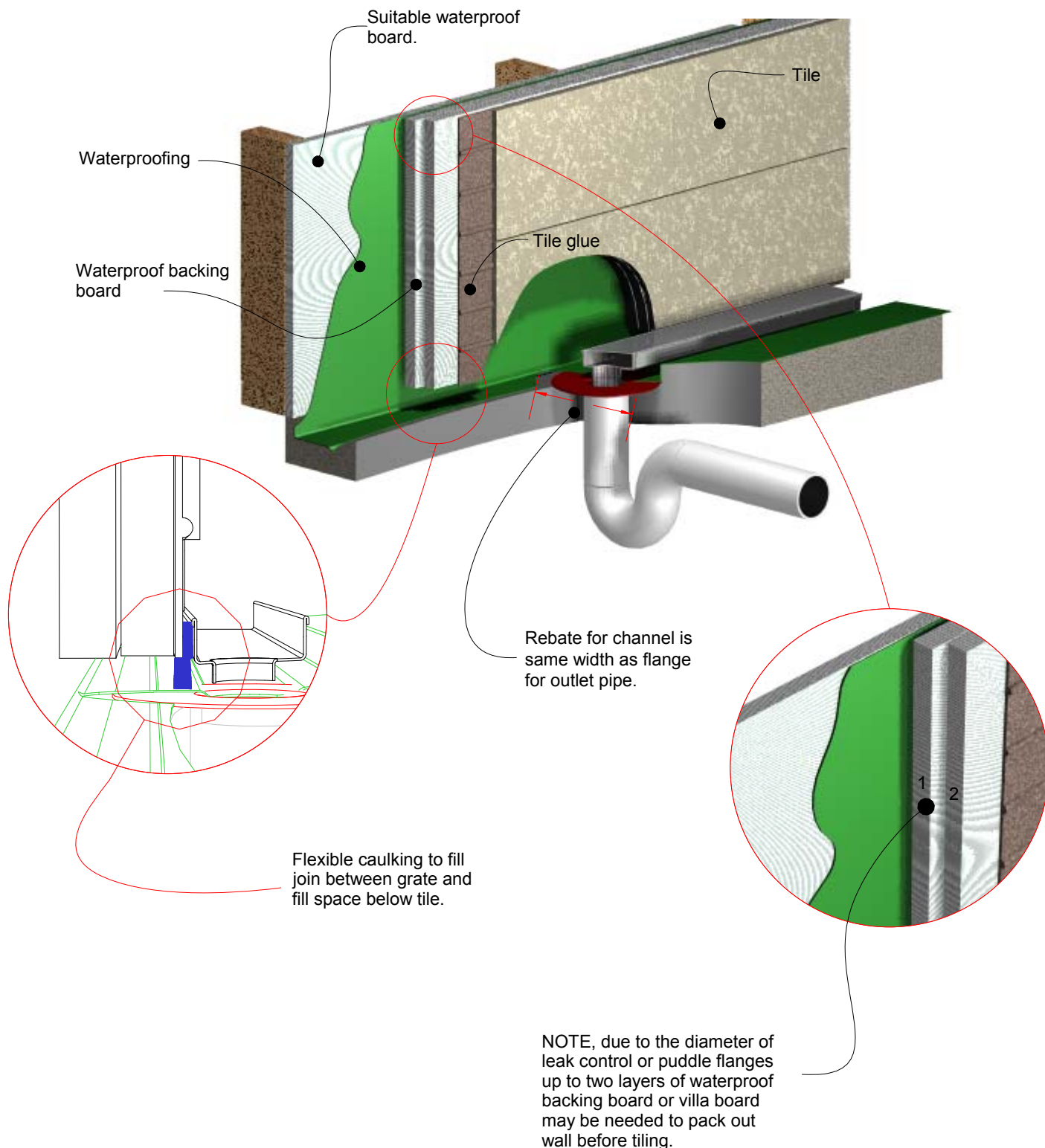
When 65i25 is running perpendicular to joist/bearer



NOTE: For exterior application allow for expansion of 1mm 3 metres by using quality suitable flexible sealant on channel joins. Use PVC solvent cement for ends and outlets.

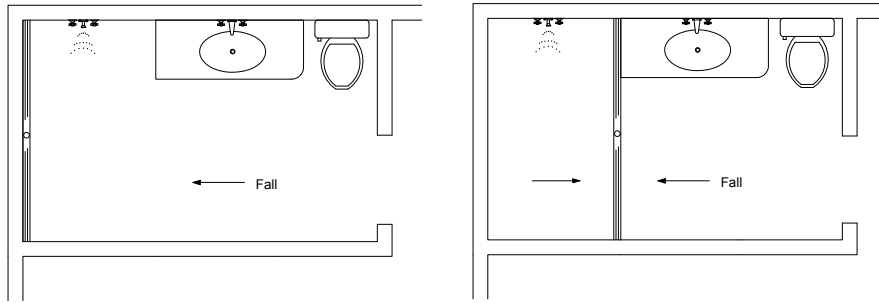
65i25 Against Wall

For 65ARi25, 65MNDi25, 65PHi25, 65PSi25, 65TRi25, and 65TRTi25.

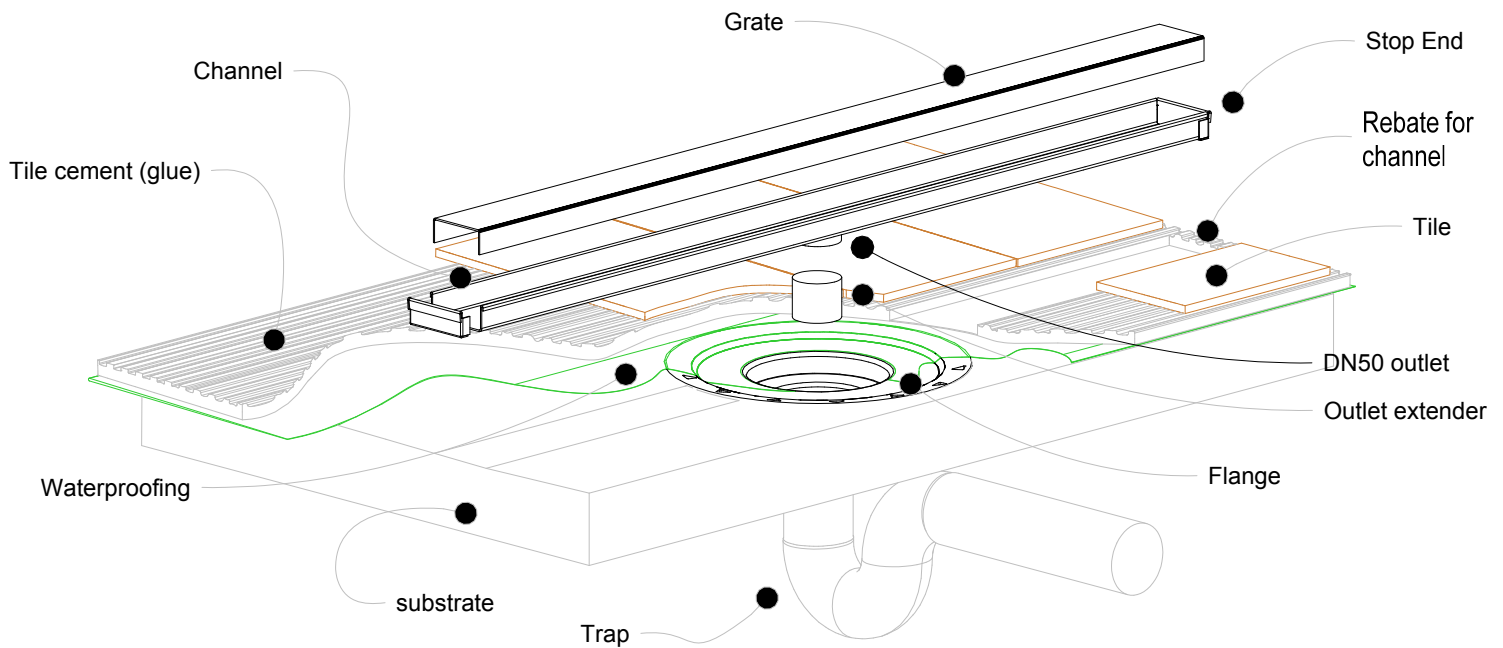


65i25 Bathroom (Kits under 2m)

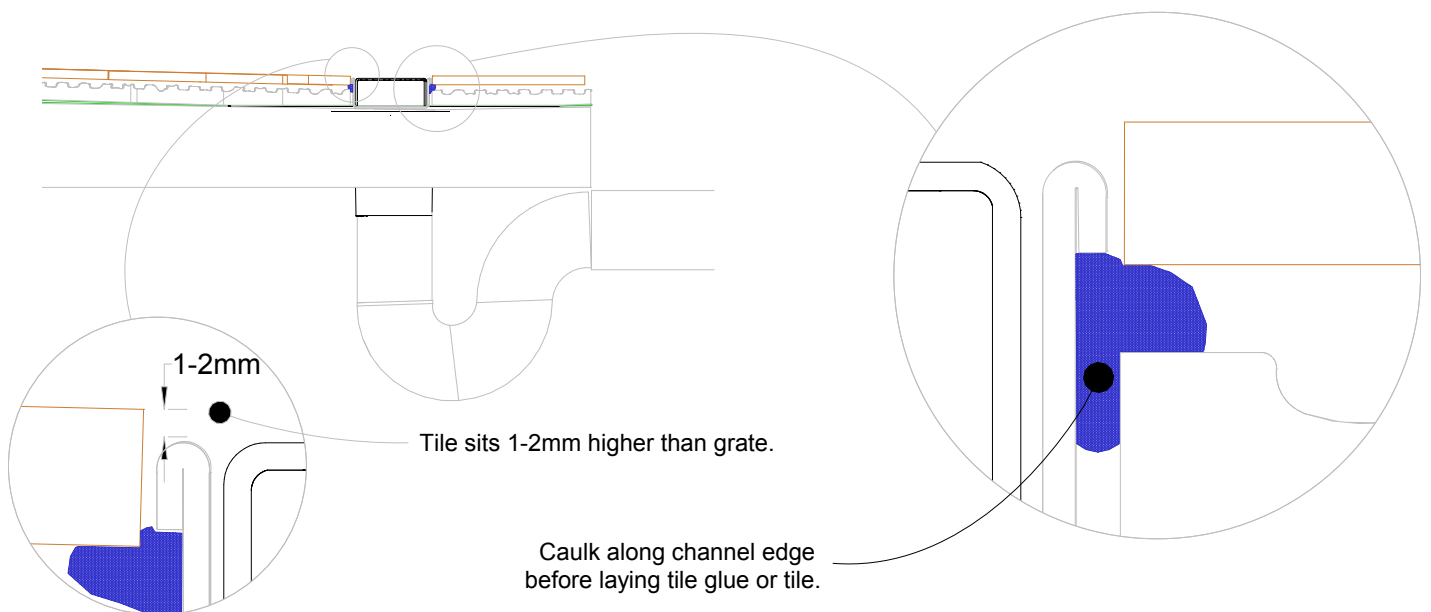
For 65ARi25, 65MNDi25, 65PHi25,
65PSi25, 65TRi25, and 65TRTi25.



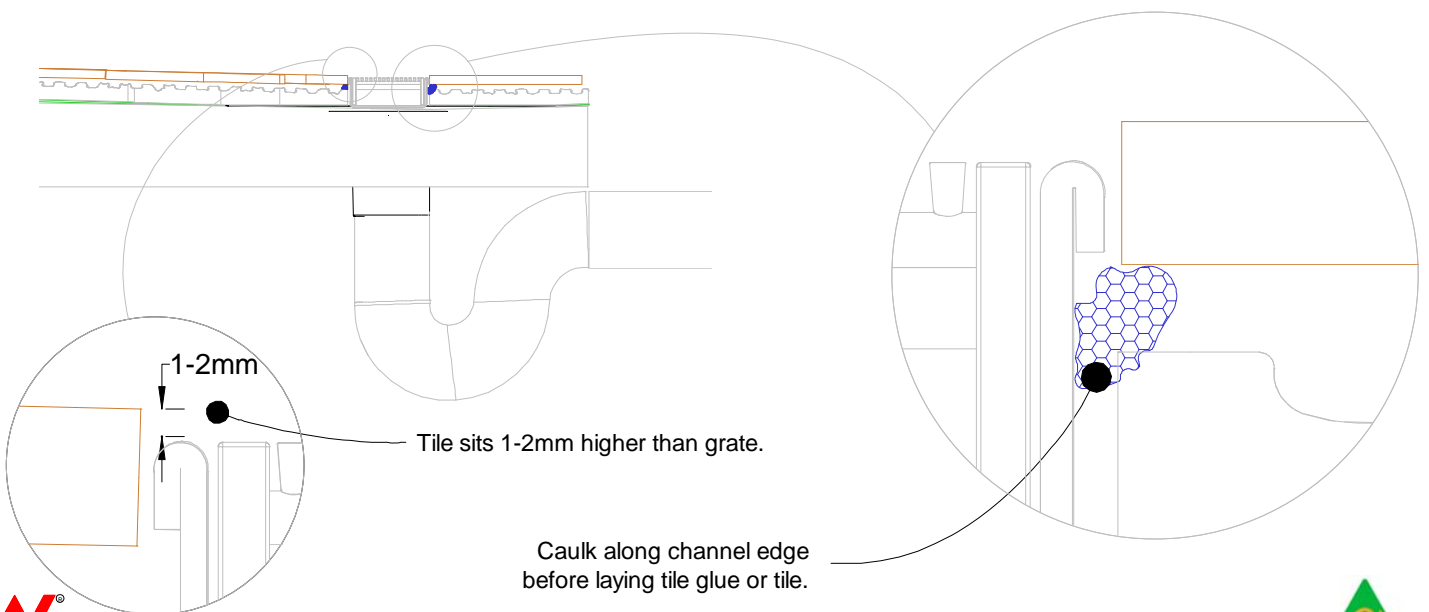
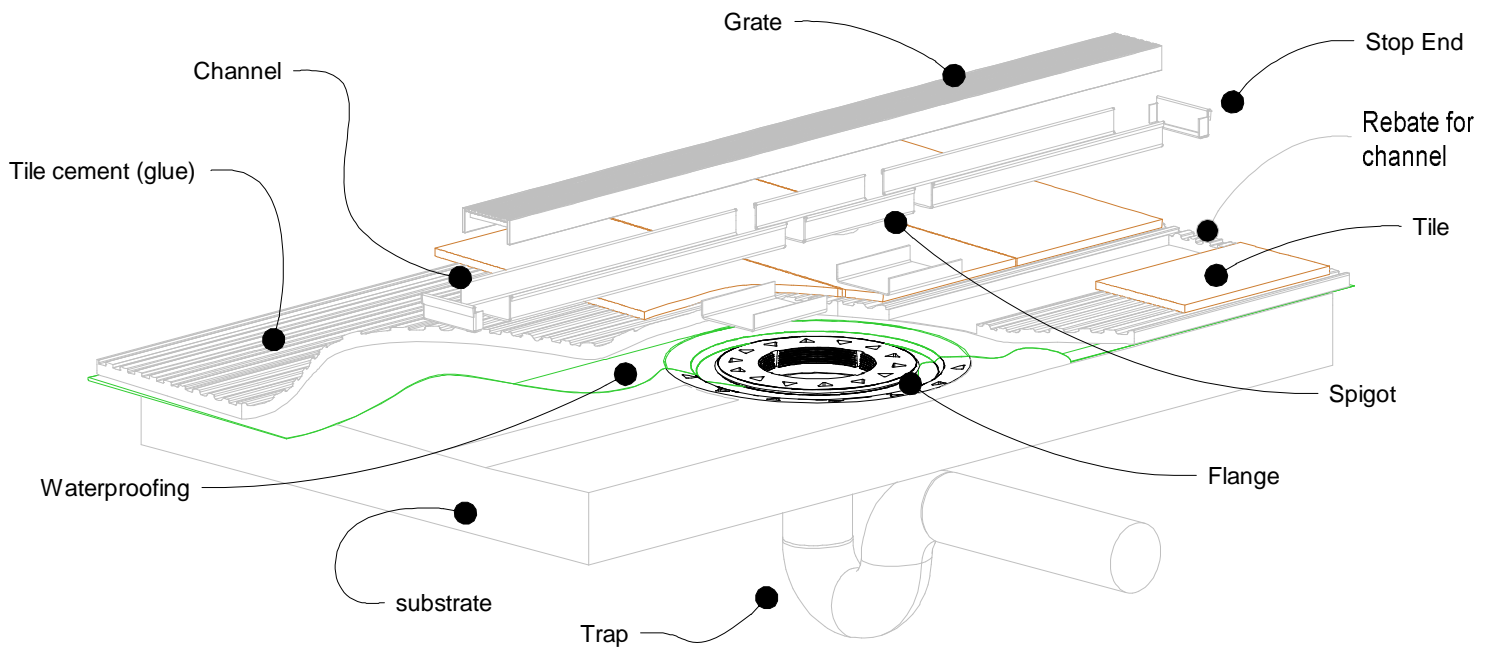
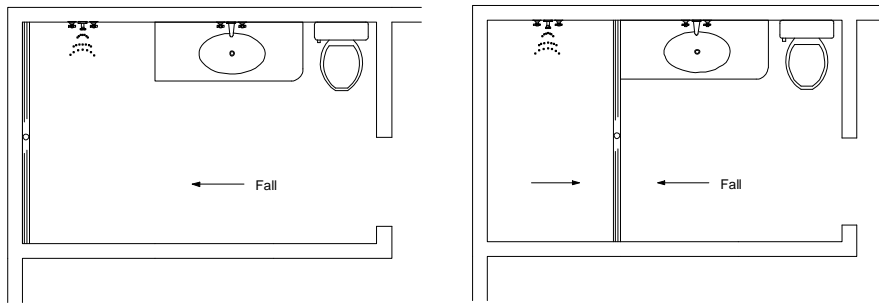
NOTE, refer to AS3500 for specific outlet pipe sizes related to your specific installation.



NOTE, this method requires the channel system to be ABOVE and SEPARATE from the WATERPROOFING.



65i25 Bathroom (Kits over 2m)

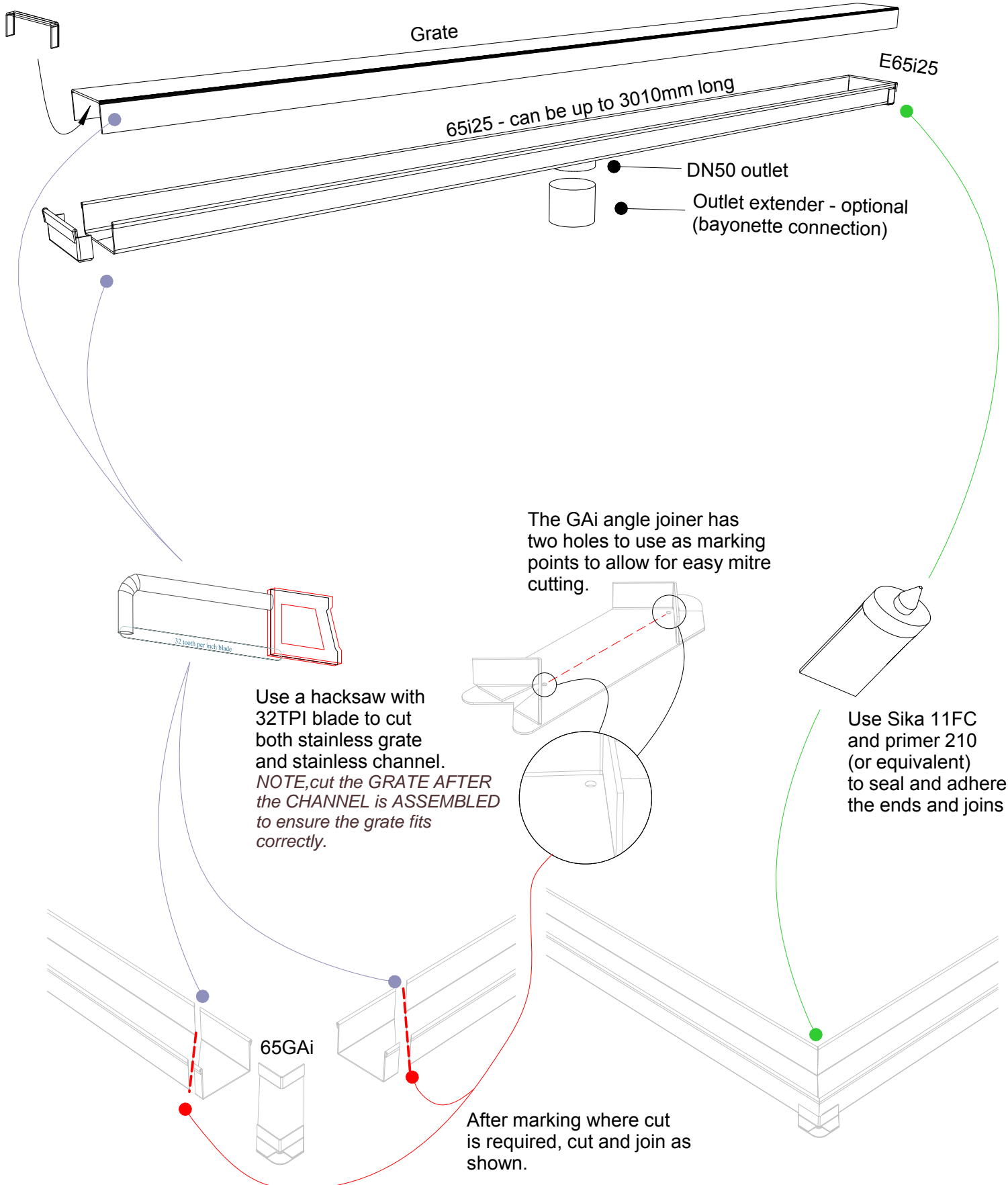


65i25 Assembly

For 65ARi25, 65MNDi25, 65PHi25, 65PSi25,
65TRi25, 65FTi25.



The PSB support fits under the cut grate to support tynes of the grate (65PS only).



Visit **stormtech.com.au**



StormtechTM

22 Norfolk Avenue, South Nowra, NSW 2541 Australia

Phone 1300 653 403 Email info@stormtech.com.au

