

ARCHITECTURAL **GRATES + DRAINS**



100PSG20

Linear Drainage System

Stormtech is the only linear drainage system available with full
Greentag and Watermark certification across our complete product range.

Telephone 1300 653 403 | **Web** stormtech.com.au





ARCHITECTURAL
GRATES + DRAINS



100PSG20

Linear Drainage System



100mm Wide Slot Perforated Stainless Steel Grate with uPVC Channel.

The 100PSG20 slot perforated grate is manufactured from 316 marine grade stainless steel combined with a UPVC drainage channel and offers an affordable option to use the Slimline system.

Kits longer than 3000mm available on request.

Please be aware that depending on the installation environment, for a pool installation or close to a surf beach, you may need to have your stainless steel grates electropolished.

Code 100PSG20

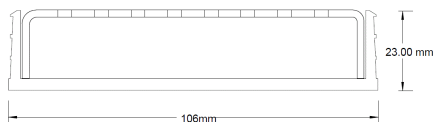
Range 100

Grate Style PS

Category Modular Kits

Channel Material uPVC

Steel Grade 316

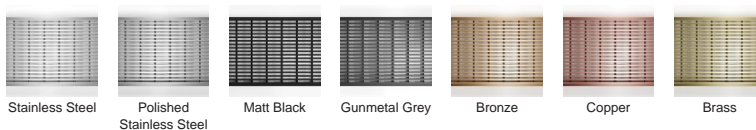


Grates longer than 1500mm supplied in sections.
Tile Inserts longer than 1200mm supplied in sections.
Channels over 3000mm supplied in sections with joiner.

SPECIFICATIONS + DIMENSIONS

Channel Width	106mm			
Channel Depth	23mm			
Length(s)	900mm	1000mm	1200mm	1500mm
	1800mm	1900mm	2000mm	2100mm
	2200mm	2400mm	2500mm	2700mm
	2800mm	2900mm	3000mm	
Outlet Size	DN80, DN100			

STORMTECH COLOUR FINISHES



Electroplate finishes subject to natural variation with time and local environment.

PRODUCT APPLICATIONS

Bathroom Drainage
Aged / Health Care Drainage
Balcony Drainage
Commercial Drainage
Courtyard / Patio Drainage
Pool and Spa Area Drainage

Hospitality Drainage
Paved Area Drainage
Shower Drainage
Multi-Residential Drainage
Special Needs Drainage
Wet Area Drainage

Copyright © Stormtech Pty Ltd. Patent 733361. Drawings not to scale, please use dimensions shown.



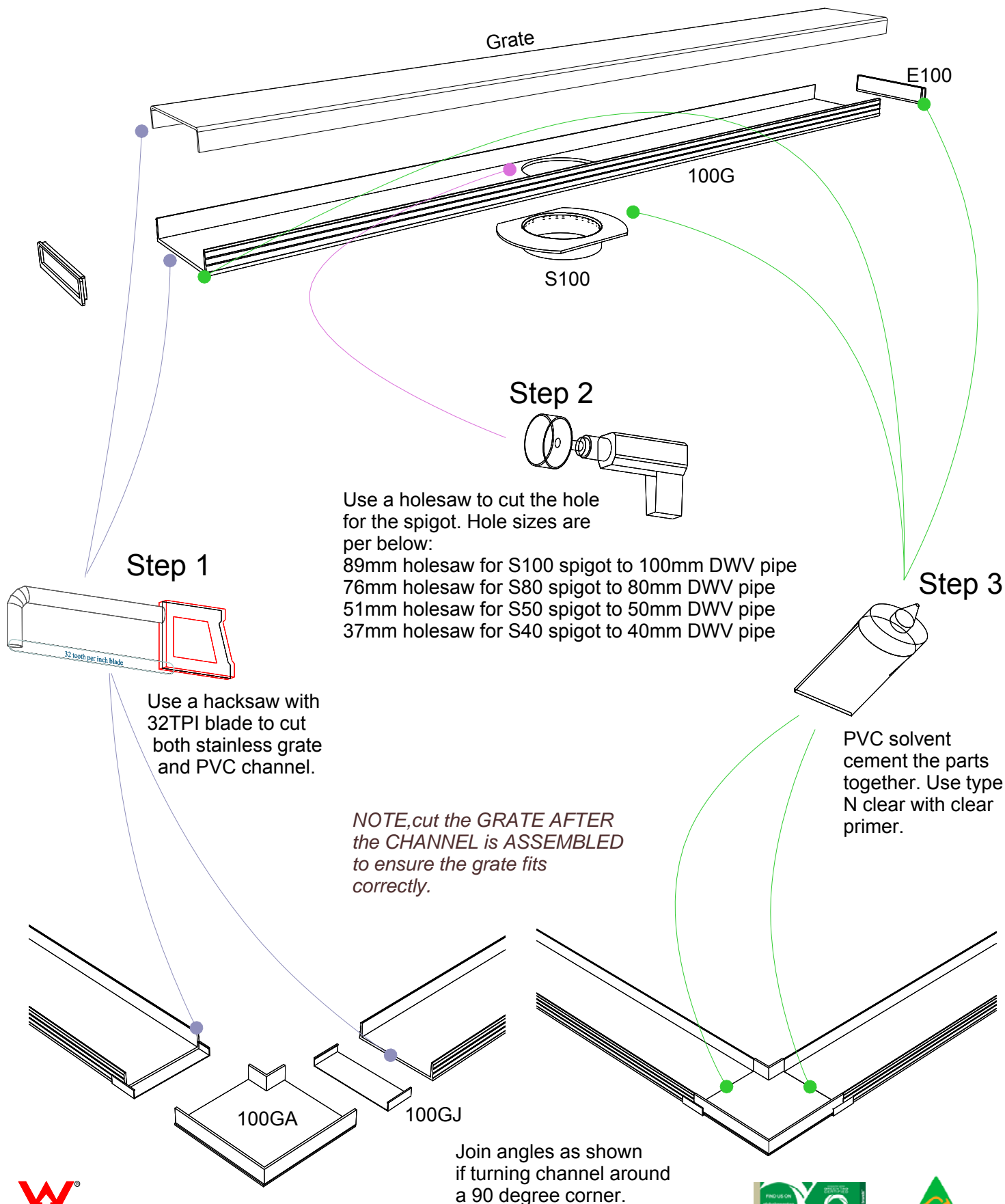
Visit **stormtech.com.au**
for tools + inspiration.

Phone **1300 653 403**

Email **info@stormtech.com.au**

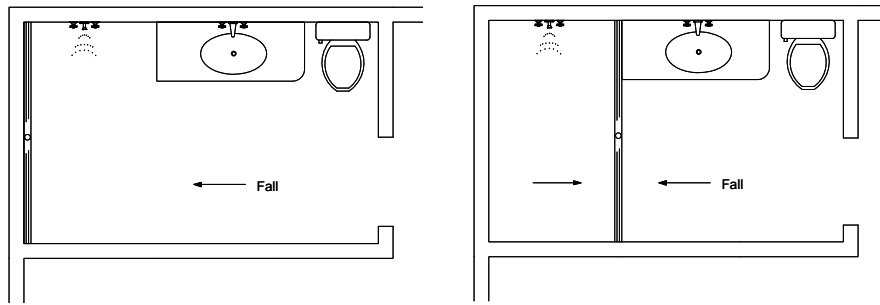
100G20 Assembly

For 100AR20, 100PS20,
100TR20, 100MND20.

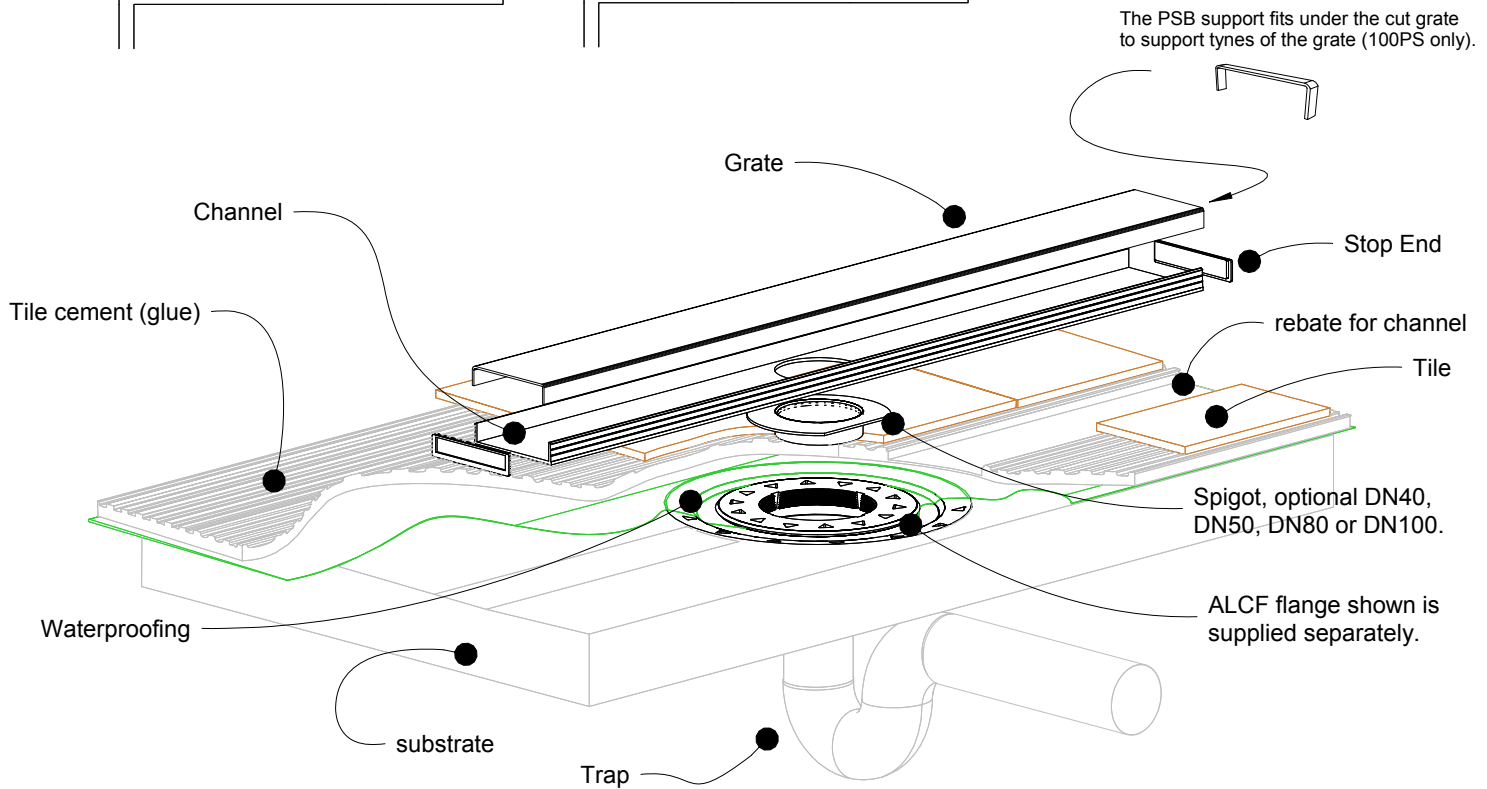


100G20 Bathroom

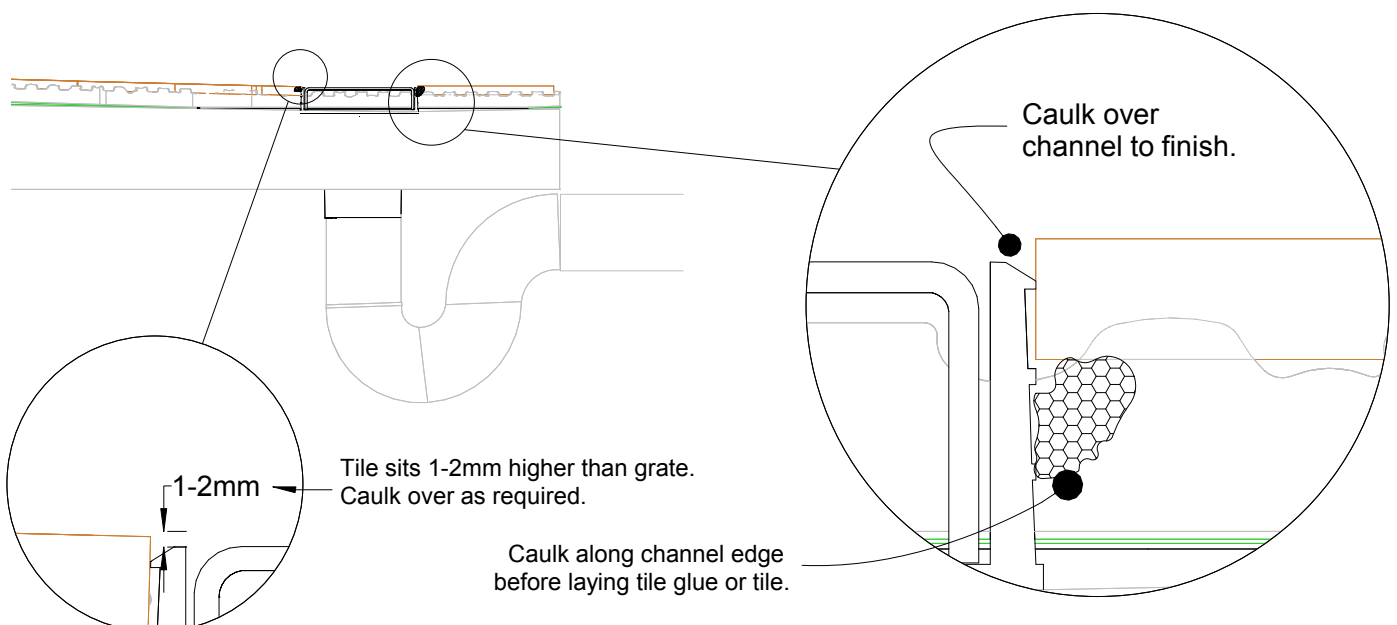
For 100AR20, 100PS20,
100TR20, 100MND20.



NOTE, ensure pipe sizes
and outlet sizes selected
are as per requirements in
AS3500.



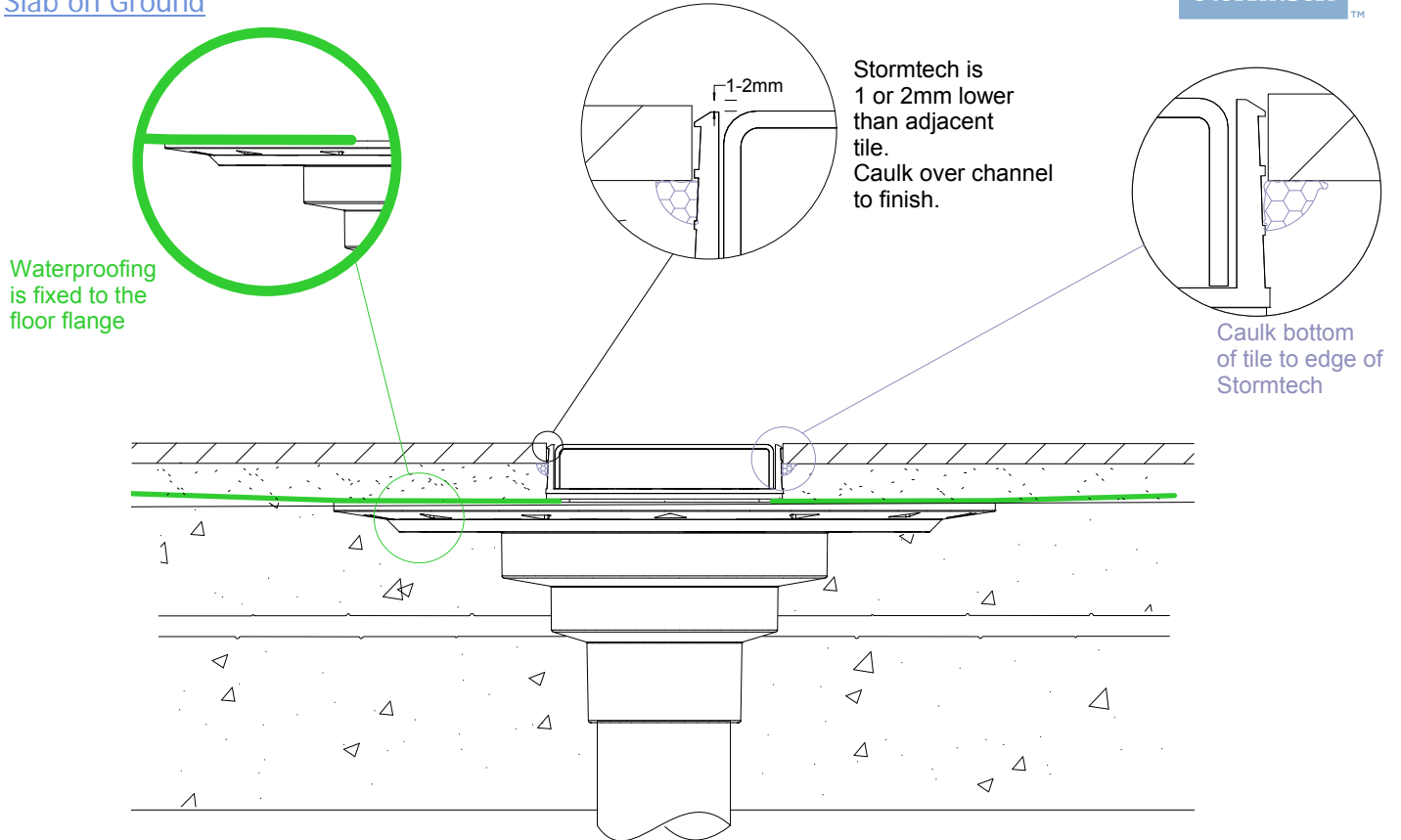
NOTE, this method requires the channel system to be ABOVE and SEPARATE from the WATERPROOFING.



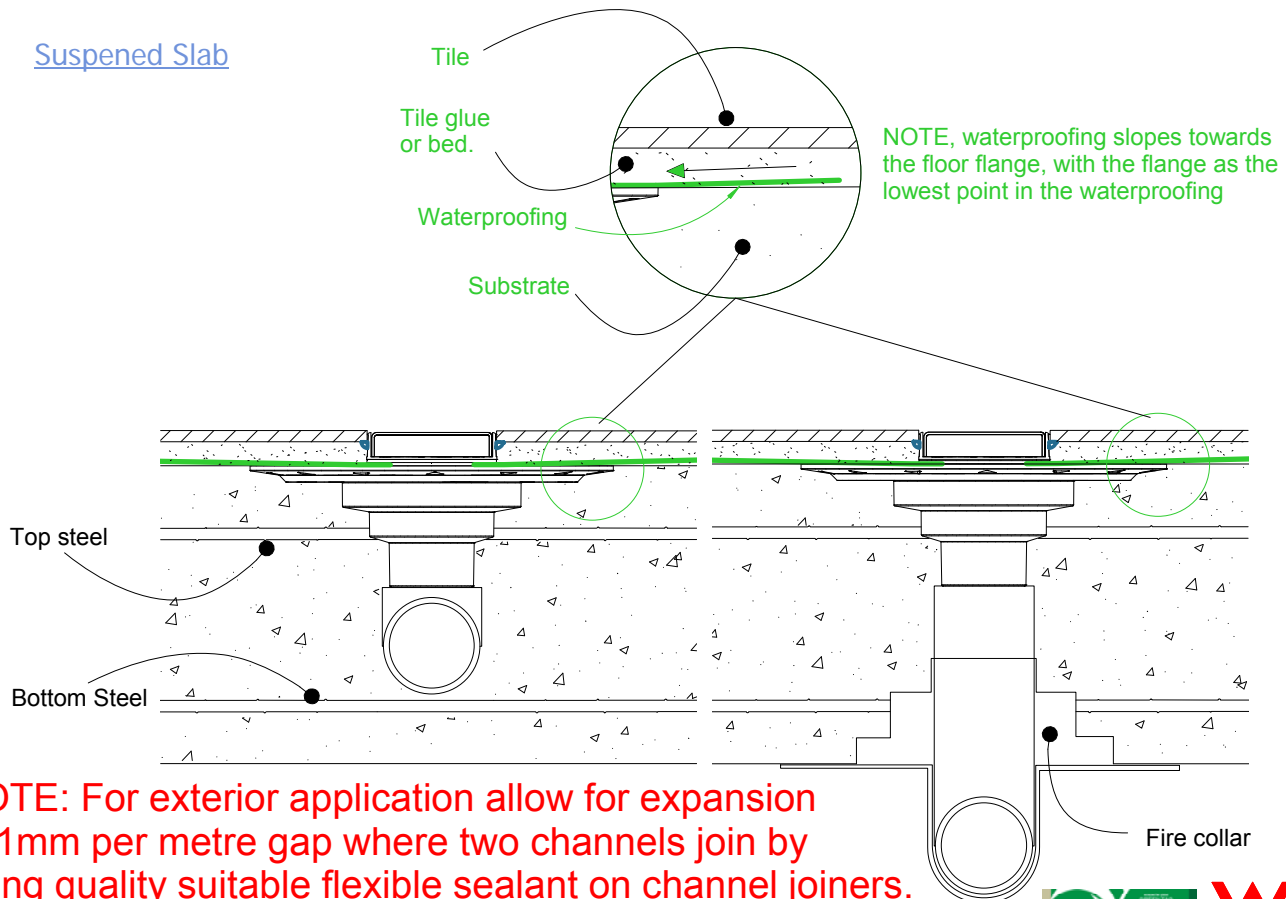
100G20 Concrete Floor or Deck

For 100AR20, 100PS20,
100TR20, 100MND20.

Slab on Ground



Suspended Slab



NOTE: For exterior application allow for expansion of 1mm per metre gap where two channels join by using quality suitable flexible sealant on channel joiners. Use PVC solvent cement for ends and outlets.

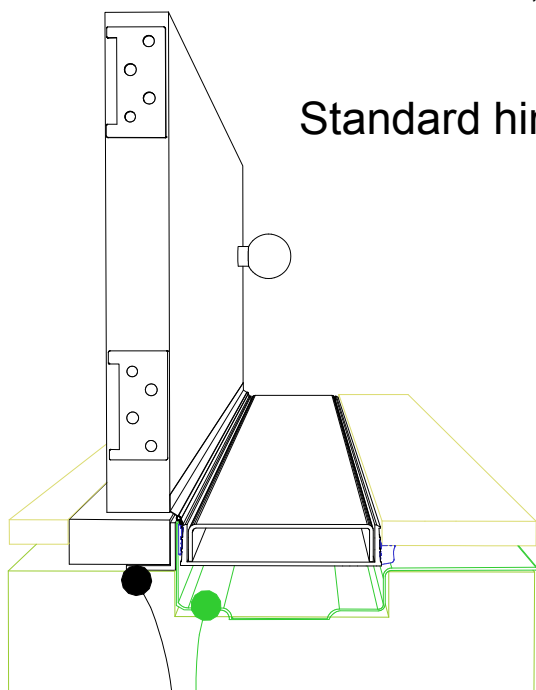


100G20 Threshold installation suggestion

For 100AR20, 100PS20,
100TR20, 100MND20.



Standard hinged door

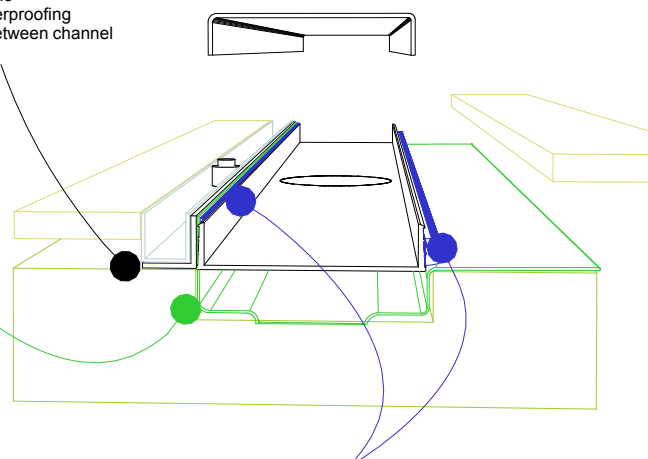


Aluminium angle
to support waterproofing
and junction between channel
and door sil.

Waterproofing

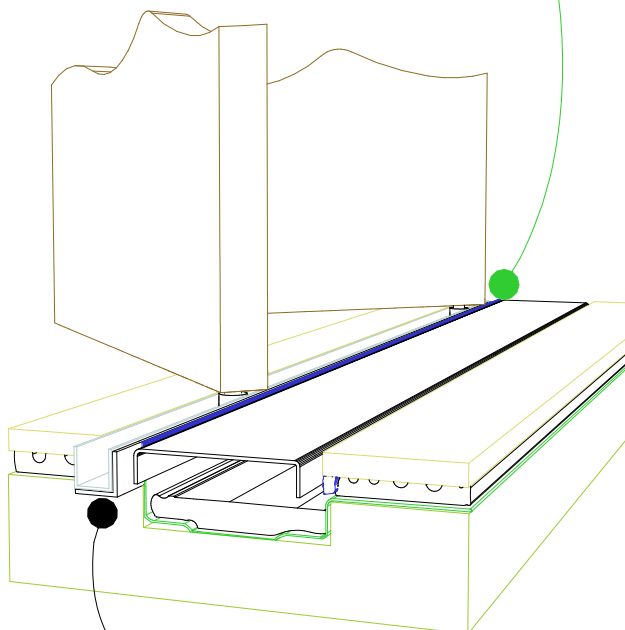
Top hung slider

Aluminium angle
to support waterproofing
and junction between channel
and door track.



For all types of threshold
installation ensure both sides
of the channel are sealed
before laying tile.

Bi-fold door



Aluminium angle
to support waterproofing
and junction between channel
and door track.

NOTE, ensure weather stip
is used on the appropriate
side of the door to ensure
drafts and moisture are
minimised.

**NOTE, ALWAYS ensure the
waterproofing is completed
before laying the Stormtech.**

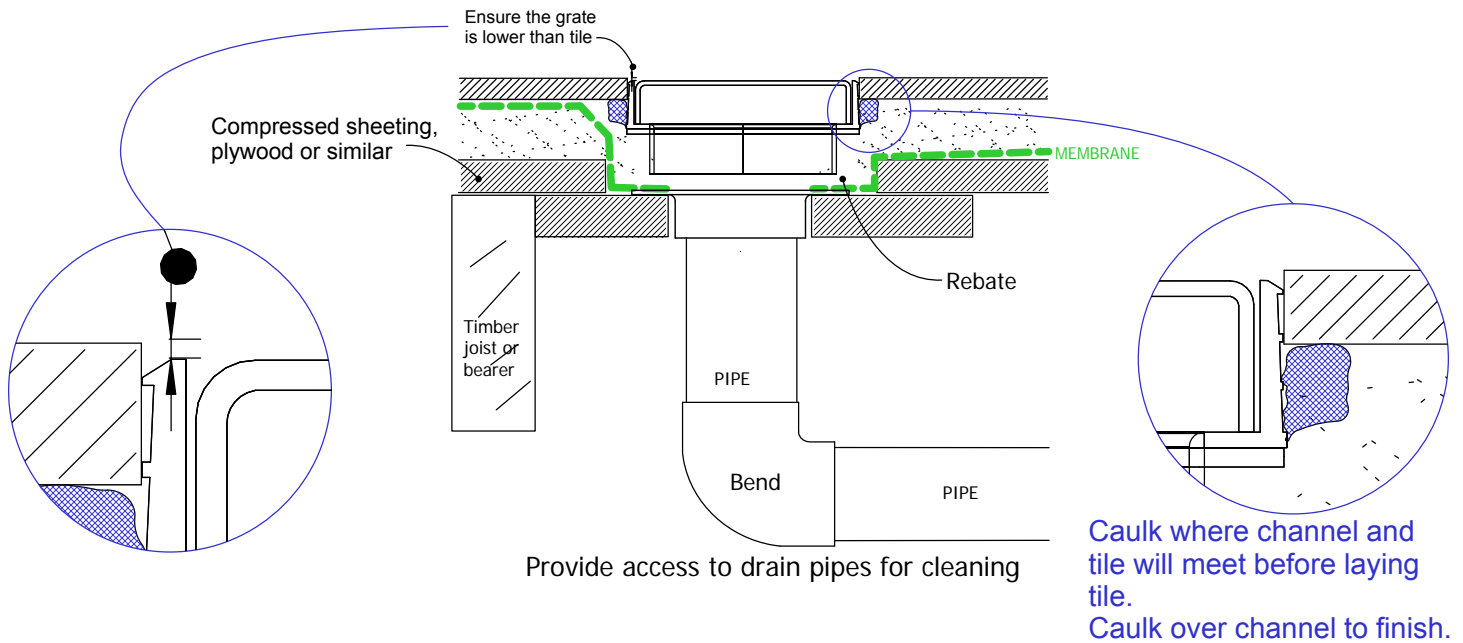


100ARG20 TIMBER FLOOR/DECK

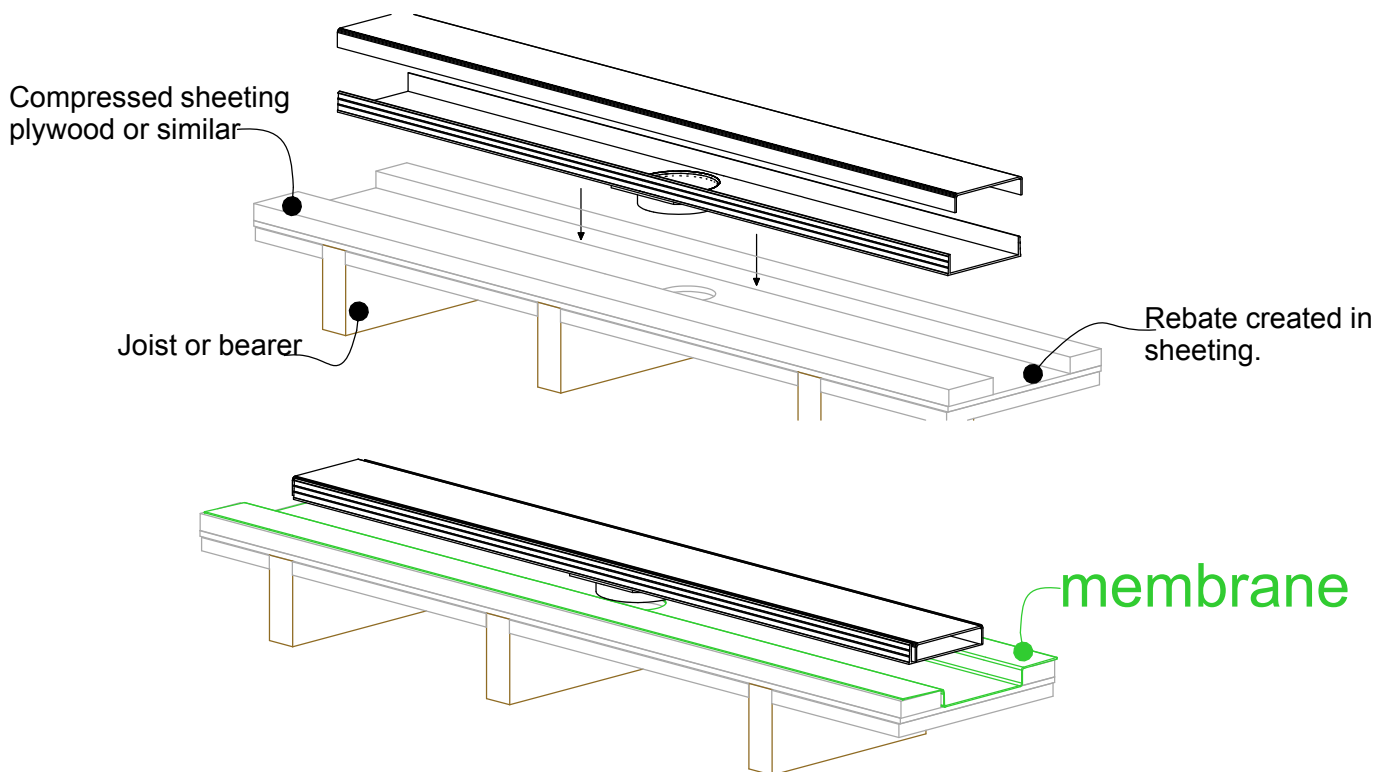
For 100AR20, 100PS20,
100TR20, 100MND20.



When 100G20 is running parallel to joist/bearer



When 100G20 is running perpendicular to joist/bearer

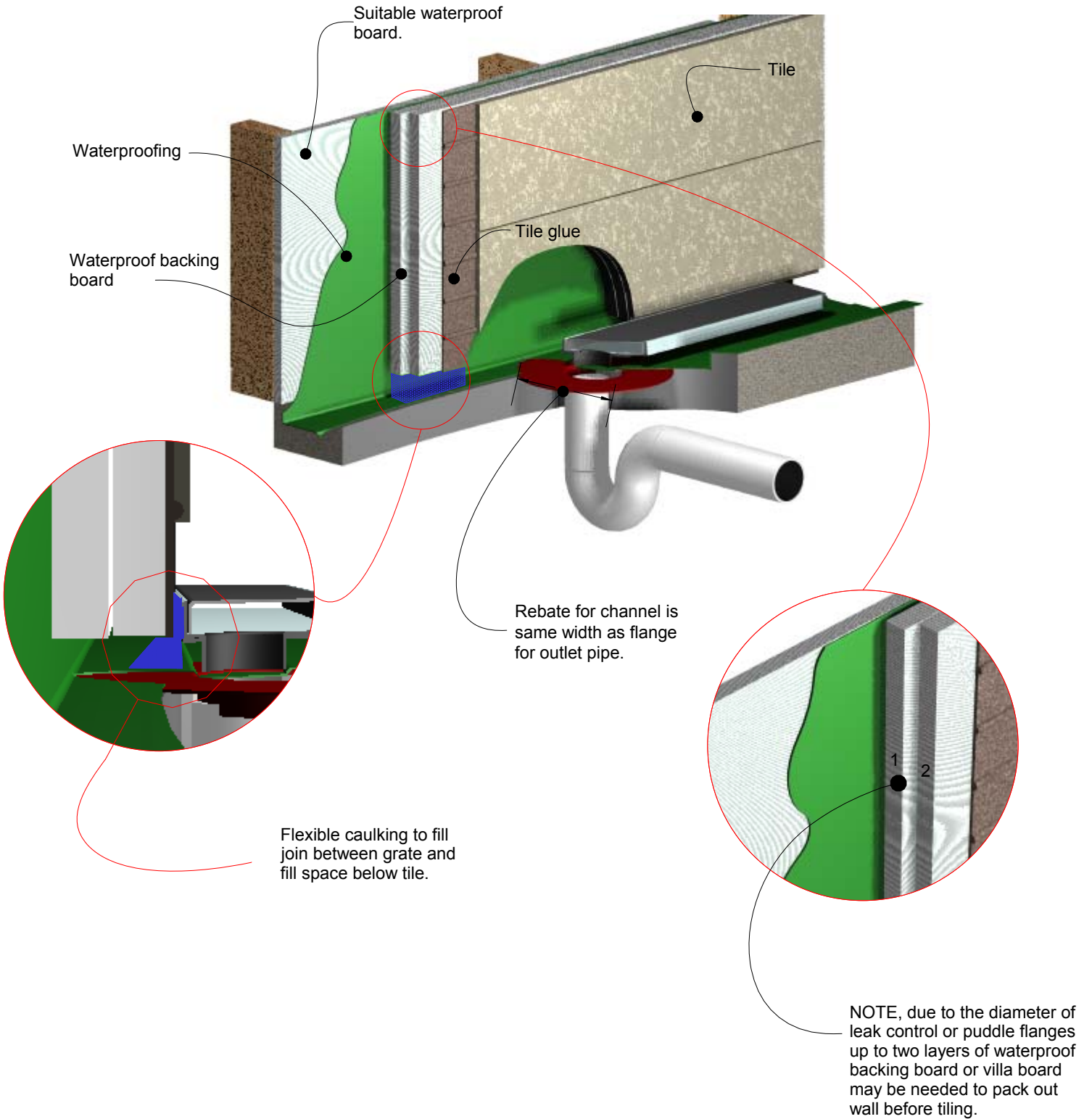


NOTE: For exterior application allow for expansion of 1mm per metre by using quality suitable flexible sealant on channel joins. Use PVC solvent cement and primer on ends and outlets.



100G20 Against Wall

For 100AR20, 100PS20,
100TR20, 100MND20.



Visit **stormtech.com.au**



StormtechTM

22 Norfolk Avenue, South Nowra, NSW 2541 Australia

Phone 1300 653 403 Email info@stormtech.com.au

