

ARCHITECTURAL **GRATES + DRAINS**



100TiXi20MTL

Tile Insert Drain

Stormtech is the only linear drainage system available with full
Greentag and Watermark certification across our complete product range.

Telephone 1300 653 403 | **Web** stormtech.com.au



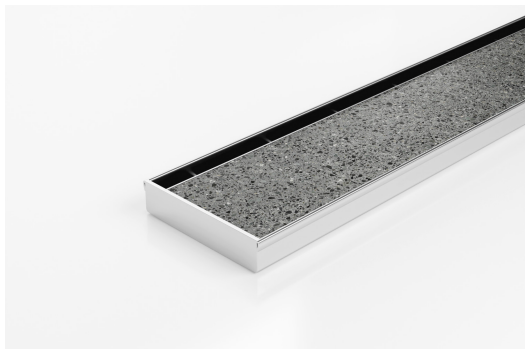


ARCHITECTURAL
GRATES + DRAINS



100TiXi20MTL

Tile Insert Drain



Code 100TiXi20MTL

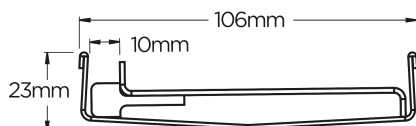
Range 100

Grate Style Ti

Category Made-to-Length

Channel Material Stainless Steel

Steel Grade 316



Grates longer than 1500mm supplied in sections.
Tile Inserts longer than 1200mm supplied in sections.
Channels over 3000mm supplied in sections with joiner.
+/-2mm tolerance on dimensions.

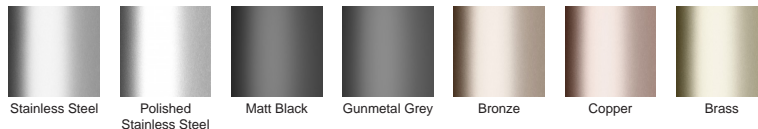
All Stainless Steel drainage unit made to length with specified outlet position.

Tile Insert Single Slot / 1.5mm thick.

SPECIFICATIONS + DIMENSIONS

Channel Width	106mm
Channel Depth	23mm
Length(s)	As Required
Outlet Size	DN80, DN100

STORMTECH COLOUR FINISHES



Electroplate finishes subject to natural variation with time and local environment. Factors such as pools/surf beaches may require electropolishing. Contact us for suitability.

PRODUCT APPLICATIONS

Bathroom Drainage

Balcony Drainage

Commercial Drainage

Courtyard / Patio Drainage

Hospitality Drainage

Shower Drainage

Special Needs Drainage

Wet Area Drainage

Copyright © Stormtech Pty Ltd. Patent 733361. Drawings not to scale, please use dimensions shown.



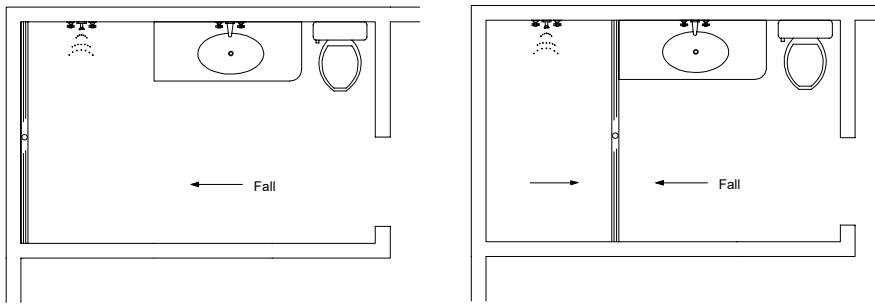
Visit **stormtech.com.au**
for tools + inspiration.

Phone **1300 653 403**

Email **info@stormtech.com.au**

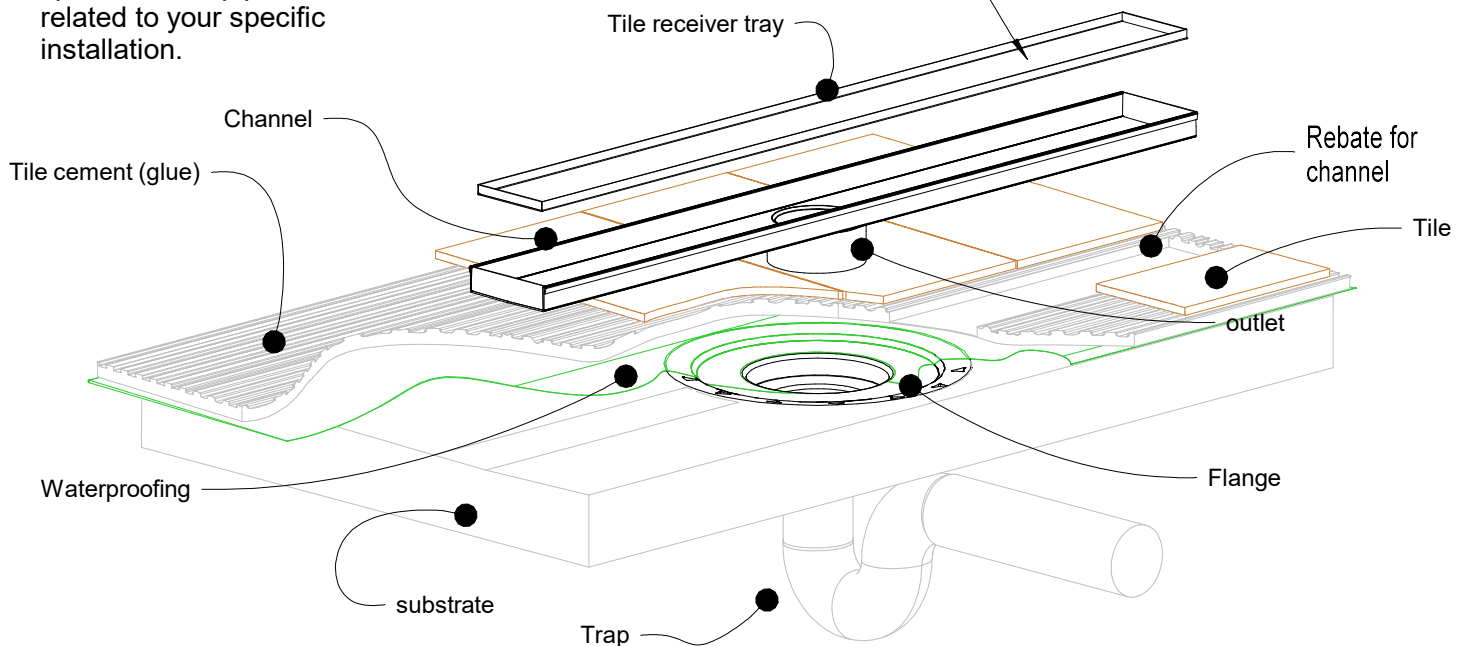
100Tii Bathroom

For 100Tii20CO, 100Tii20MTL, 100Tii30MTL, 100TiiCo30,
100Tii40MTL, 100TiXi20MTL

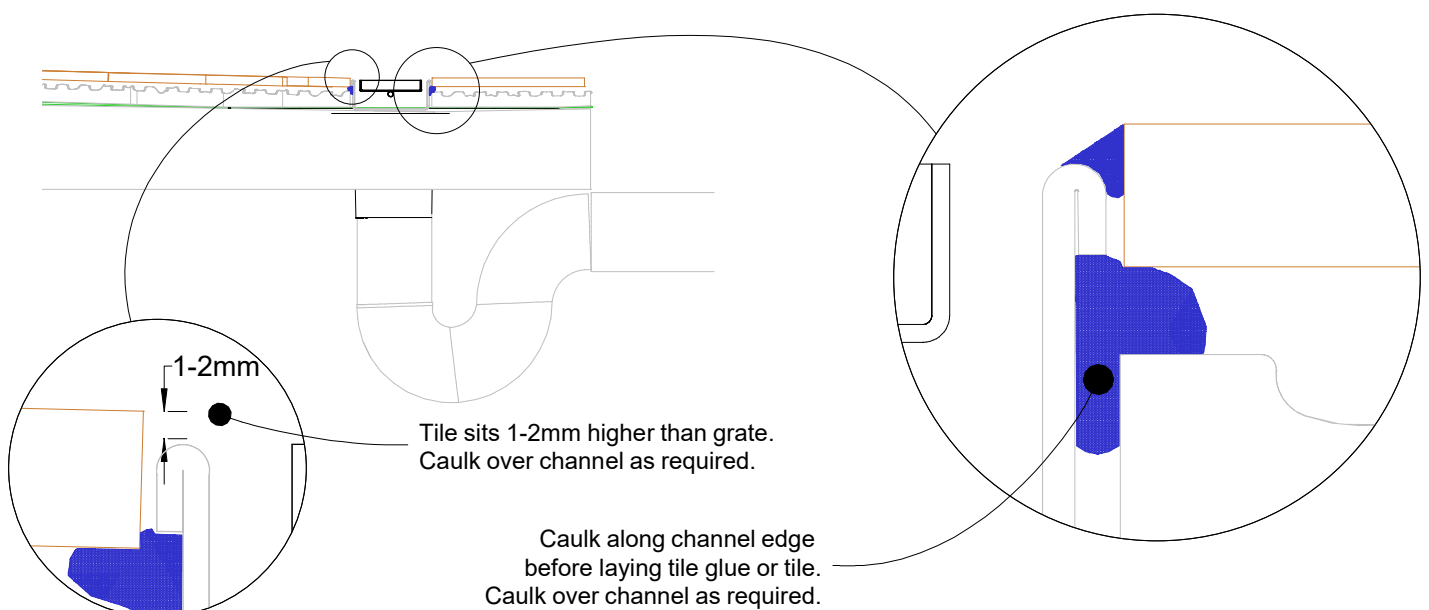


NOTE, refer to AS3500 for specific outlet pipe sizes related to your specific installation.

Cut tile to width and fix into tile receiver tray. To ensure no metal contamination causes spalling below the tile. It is recommended to use a paint-on waterproof membrane on the interior of the tile receiver tray before tiling to ensure no contaminants are trapped below tile tile against the stainless.



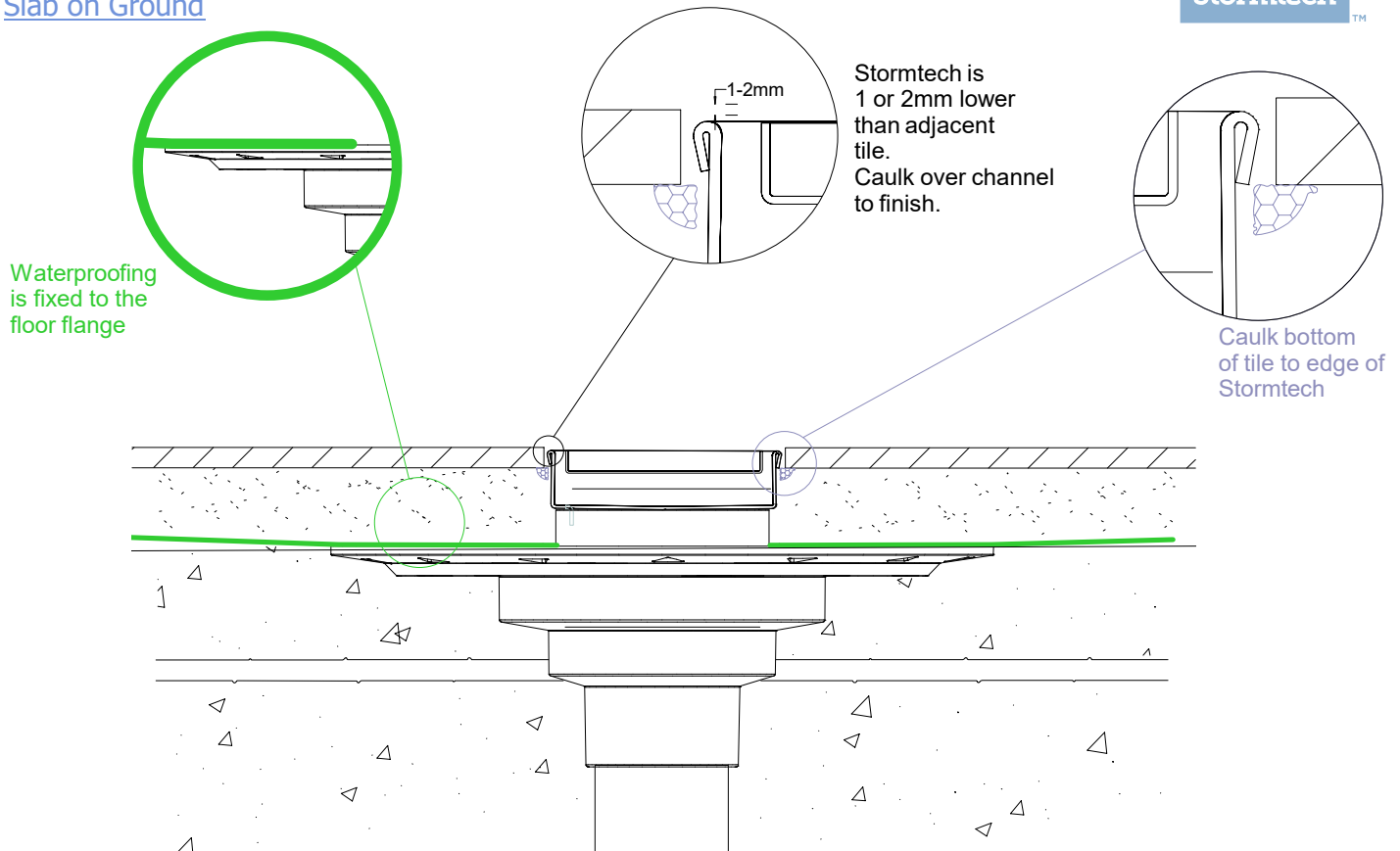
NOTE, this method requires the channel system to be ABOVE and SEPARATE from the WATERPROOFING.



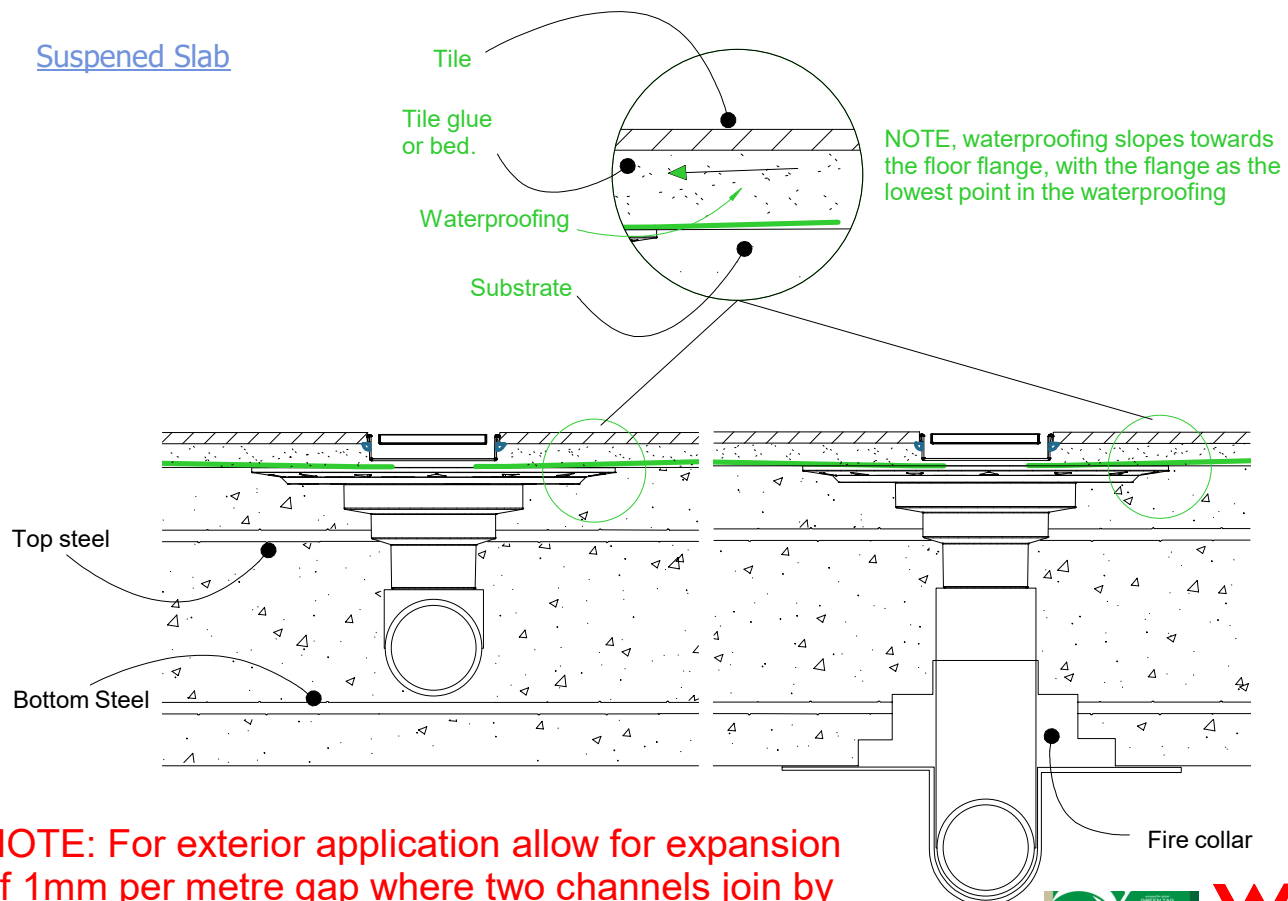
100Tii Concrete Floor or Deck

For 100Tii20CO, 100Tii20MTL, 100Tii30MTL, 100TiiCo30, 100TiXi20MTL, 100Tii40MTL.

Slab on Ground



Suspended Slab



NOTE: For exterior application allow for expansion of 1mm per metre gap where two channels join by using quality suitable flexible sealant on channel joiners.

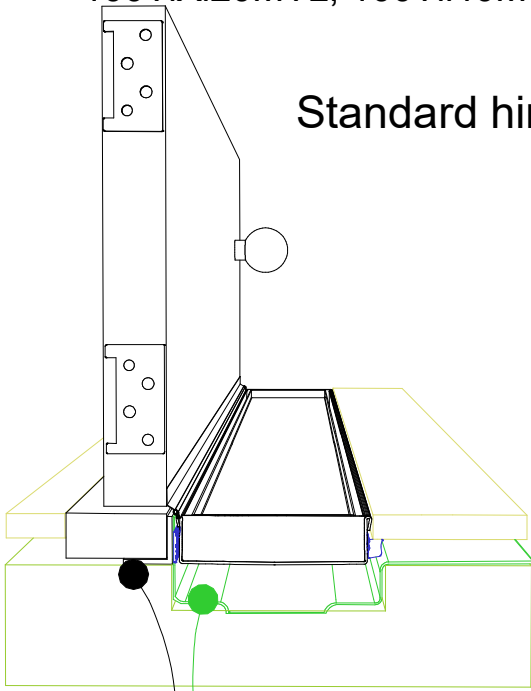


100Tii Threshold installation suggestion

For 100Tii20CO, 100Tii20MTL, 100Tii30MTL, 100TiiCo30, 100TiXi20MTL, 100Tii40MTL.



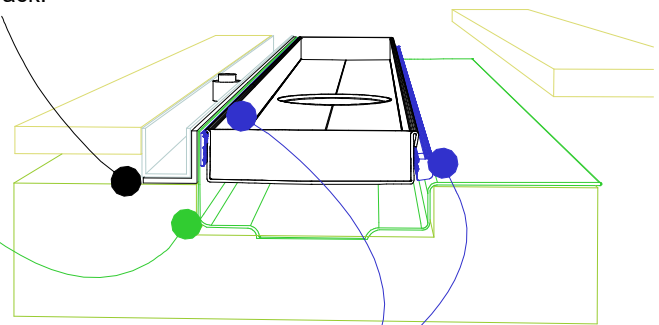
Standard hinged door



Aluminium angle to support waterproofing and junction between channel and door sil.

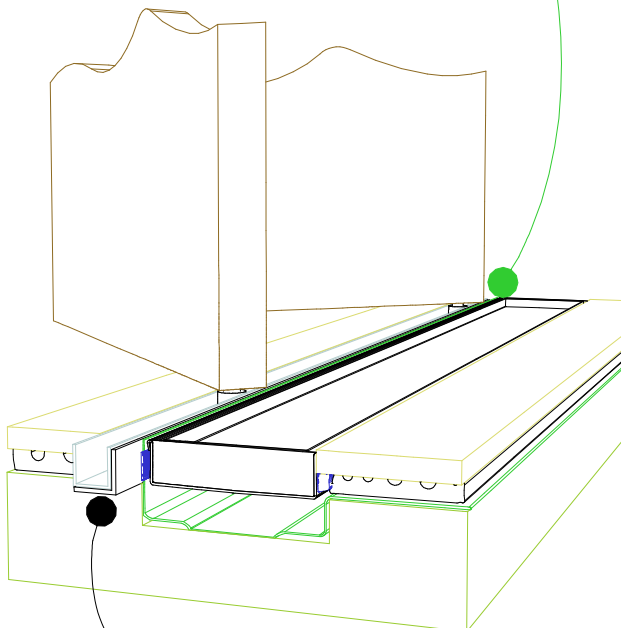
Top hung slider

Aluminium angle to support waterproofing and junction between channel and door track.



Waterproofing

Bi-fold door



Aluminium angle to support waterproofing and junction between channel and door track.

For all types of threshold installation ensure both sides of the channel are sealed before laying tile.

NOTE, ensure weather stip is used on the appropriate side of the door to ensure drafts and moisture are minimised.

NOTE, ALWAYS ensure the waterproofing is completed before laying the Stormtech.

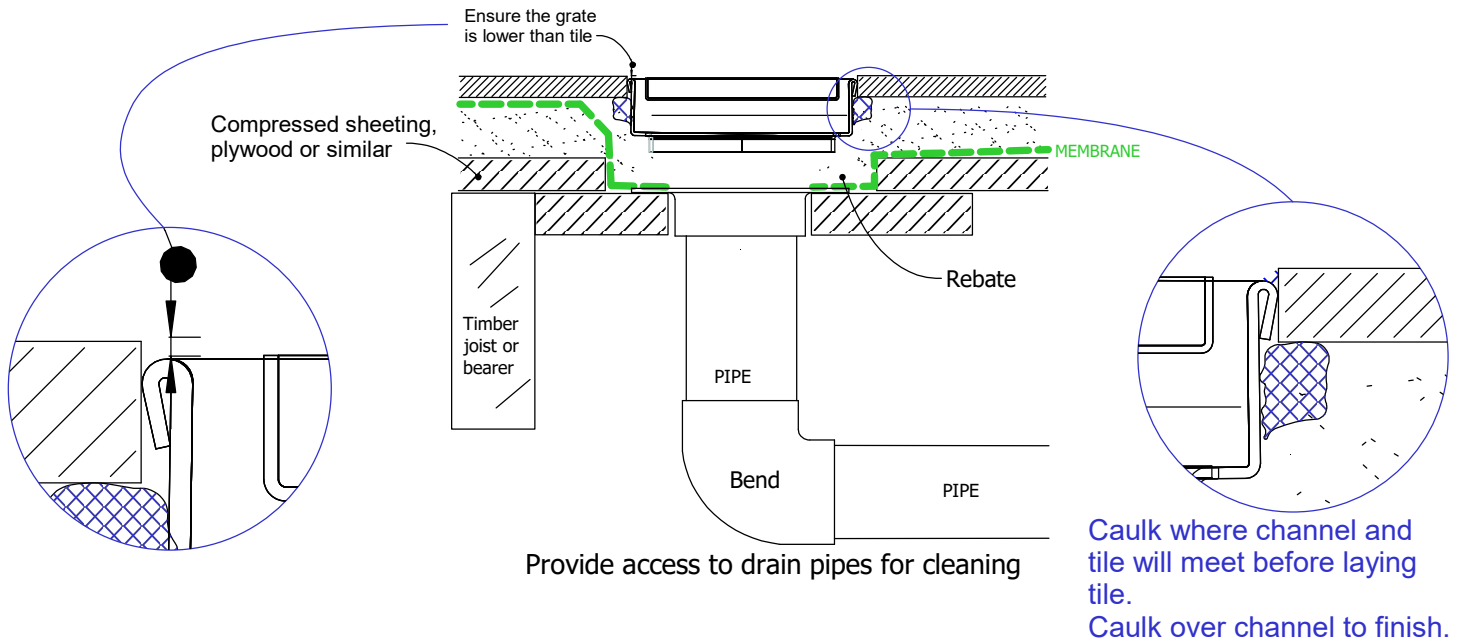


100Tii TIMBER FLOOR/DECK

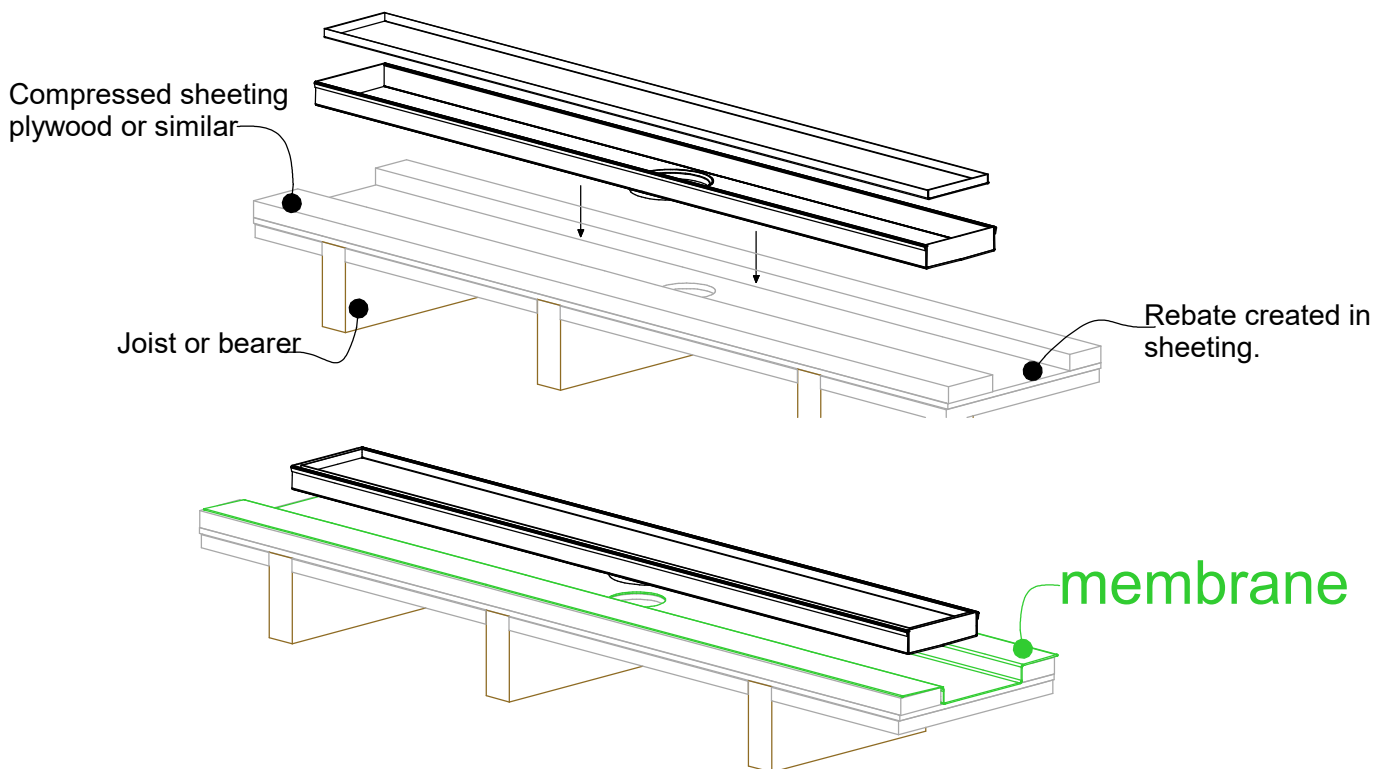
For 100Tii20CO, 100Tii20MTL, 100Tii30MTL, 100TiiCo30, 100TiXi20MTL, 100Tii40MTL.



When 100Tii is running parallel to joist/bearer



When 100Tii is running perpendicular to joist/bearer

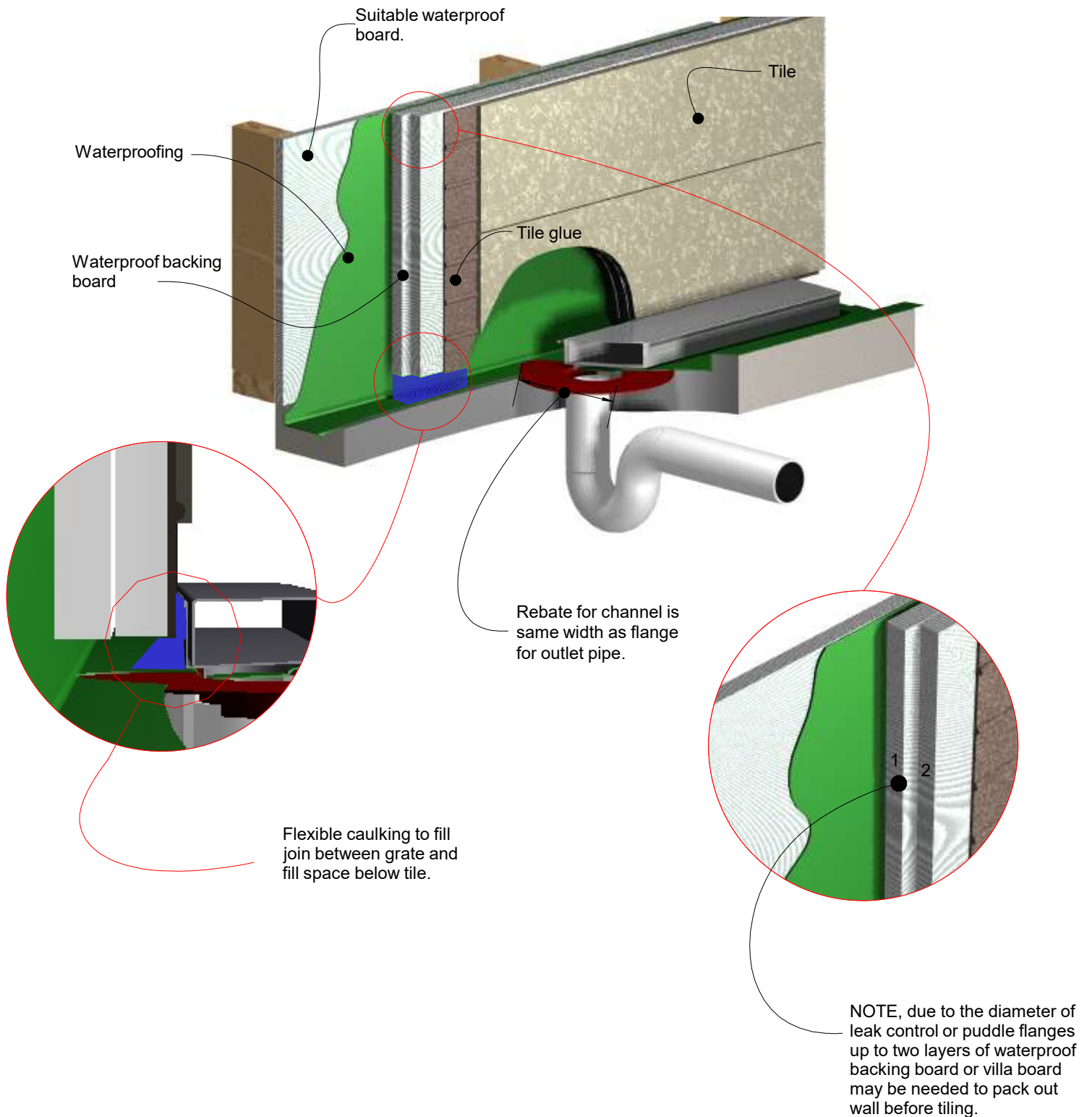


NOTE: For exterior application allow for expansion of 1mm per 3 metres by using quality suitable flexible sealant on channel joins.



100Tii Against Wall

For 100Tii20CO, 100Tii20MTL, 100Tii30MTL, 100TiiCo30, 100TiXi20MTL, 100Tii40MTL.

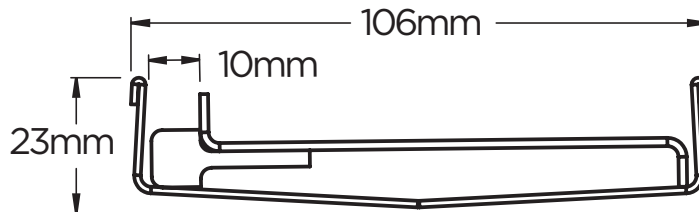


Made-to-Length

100TiXi20MTL › Single Slot Tile Insert



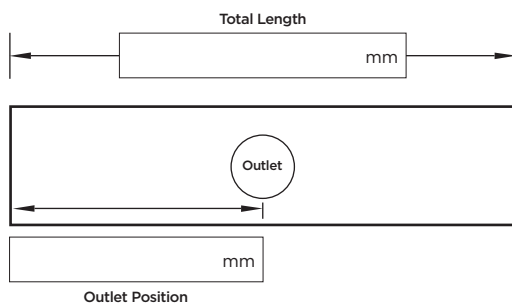
Tray and Tile Insert Profile



100TiXi20MTL
Suits tiles up to 10mm thick

Specify Drain Length / Outlet Position & Outlet Size

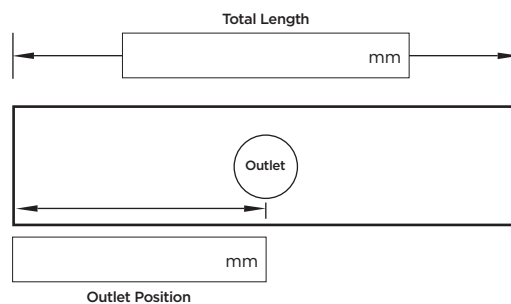
Drain 1



Required Outlet Size

☐ 76mm ☐ 89mm

Drain 2



Required Outlet Size

☐ 76mm ☐ 89mm

Please Note

See AS3500 standard & local regulator for specific outlet and drainage requirements.
Stainless Steel Grade is 316 unless specified.
Made-to-Length (MTL) minimum charge of 800mm.

Tile Inserts longer than 1200mm are supplied in multiple sections.
Channels are a maximum 3000mm in one piece, channels over 3000mm are supplied in multiple sections with joiner.
+/- 2mm tolerance on dimensions.

Full Name

Company Name

Telephone

Email Address

Order Number

Stormtech Quote Number

Signature

Visit **stormtech.com.au**



StormtechTM

22 Norfolk Avenue, South Nowra, NSW 2541 Australia

Phone 1300 653 403 Email info@stormtech.com.au

