

ARCHITECTURAL **GRATES + DRAINS**



# 38PSG40

## Linear Drainage System

Stormtech is the only linear drainage system available with full  
Greentag and Watermark certification across our complete product range.

**Telephone** 1300 653 403 | **Web** [stormtech.com.au](http://stormtech.com.au)



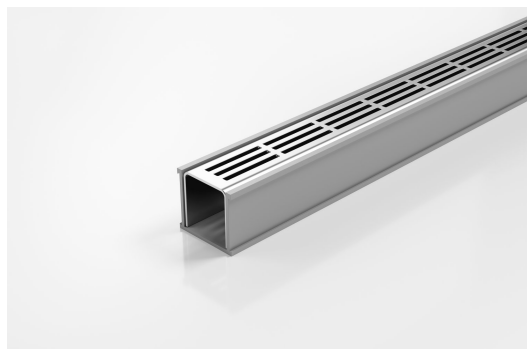


ARCHITECTURAL  
GRATES + DRAINS



# 38PSG40

## Linear Drainage System



**Stainless steel drainage unit with uPVC Channel and Fittings**

The 38PS40 is a Punched Slot grate design.

Manufactured from 316 marine grade the 38PS is 38mm wide and 40mm deep.

Lengths over 3000mm available on request.

**Refer to AS3500 for outlet pipe sizes specific to your installation.**

**Code 38PSG40**

**Range 38**

**Grate Style PS**

**Category Modular Kits**

**Channel Material uPVC**

**Steel Grade 316**

### SPECIFICATIONS + DIMENSIONS

<b>Channel Width</b>	46mm						
<b>Channel Depth</b>	42mm						
<b>Length(s)</b>	900mm	1000mm	1200mm	1500mm	1800mm	1900mm	2000mm
	2200mm	2400mm	2700mm	3000mm			
<b>Outlet Size</b>	DN40, DN50						

### STORMTECH COLOUR FINISHES

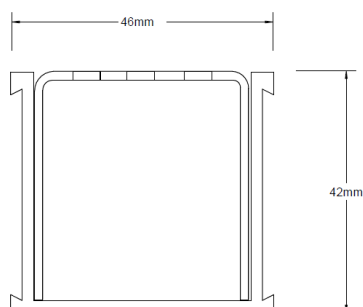


Electroplate finishes subject to natural variation with time and local environment.

### PRODUCT APPLICATIONS

Bathroom Drainage  
Aged / Health Care Drainage  
Balcony Drainage  
Commercial Drainage  
Courtyard / Patio Drainage  
Pool and Spa Area Drainage

Hospitality Drainage  
Paved Area Drainage  
Shower Drainage  
Multi-Residential Drainage  
Special Needs Drainage  
Threshold Drainage



Grates longer than 1500mm supplied in sections.  
Tile Inserts longer than 1200mm supplied in sections.  
Channels over 3000mm supplied in sections with joiner.

Copyright © Stormtech Pty Ltd. Patent 733361. Drawings not to scale, please use dimensions shown.



Visit **stormtech.com.au**  
for tools + inspiration.

Phone **1300 653 403**

Email **info@stormtech.com.au**

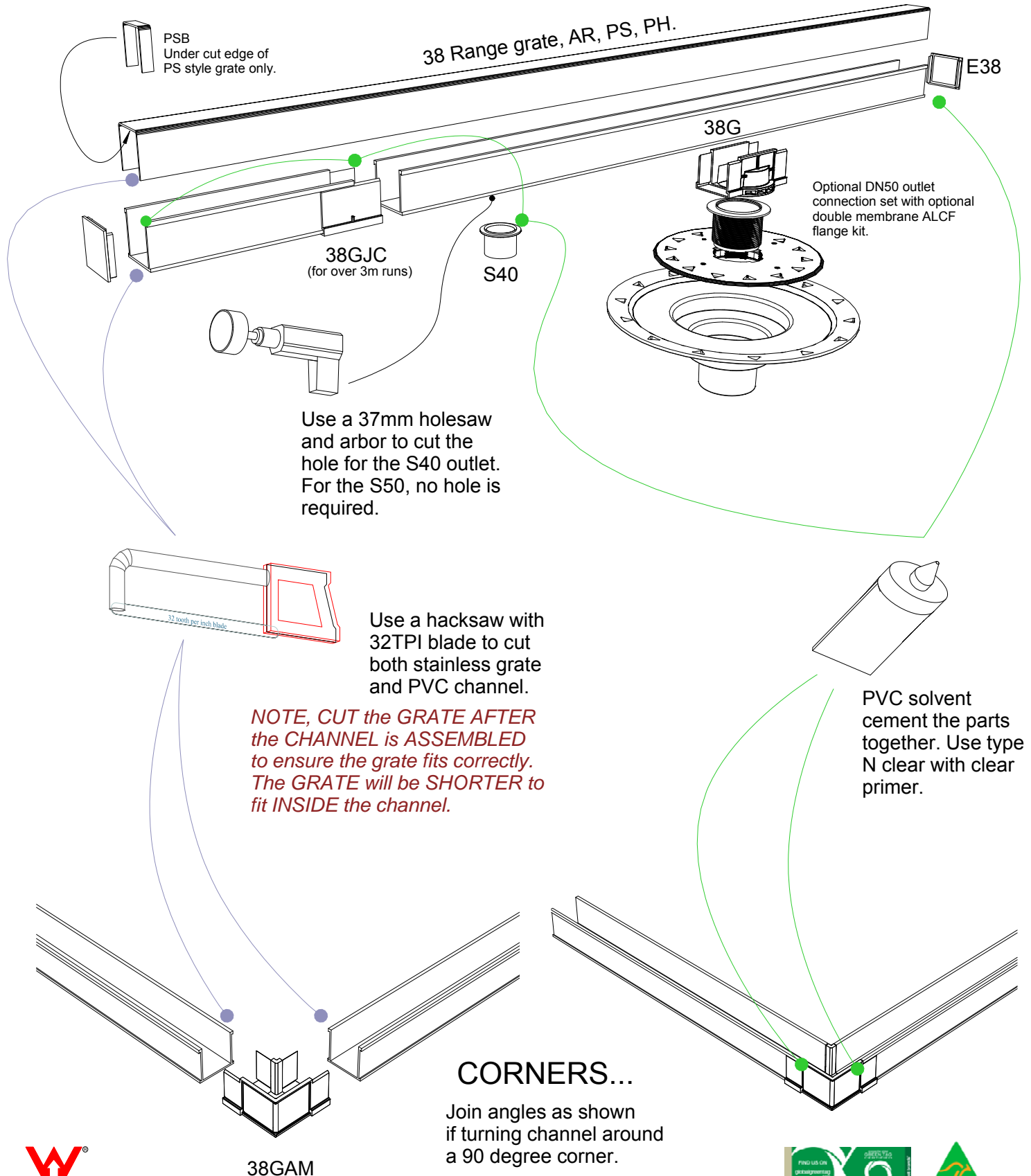
# 38G40 Assembly

Assembly instruction for:

38ARG40

38PSG40

38PHG40



38GAM



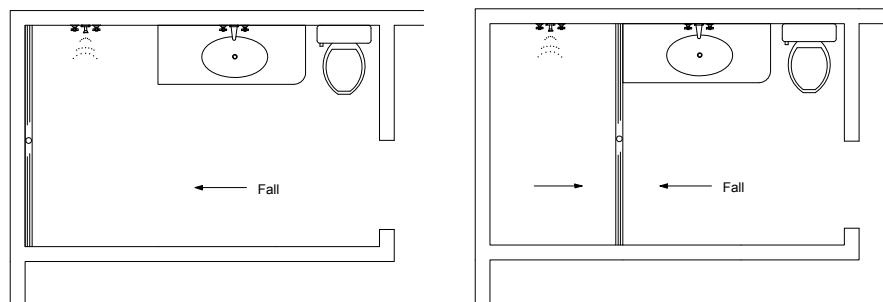
# 38G40 Bathroom DN 40 outlet

Installation sequence for:

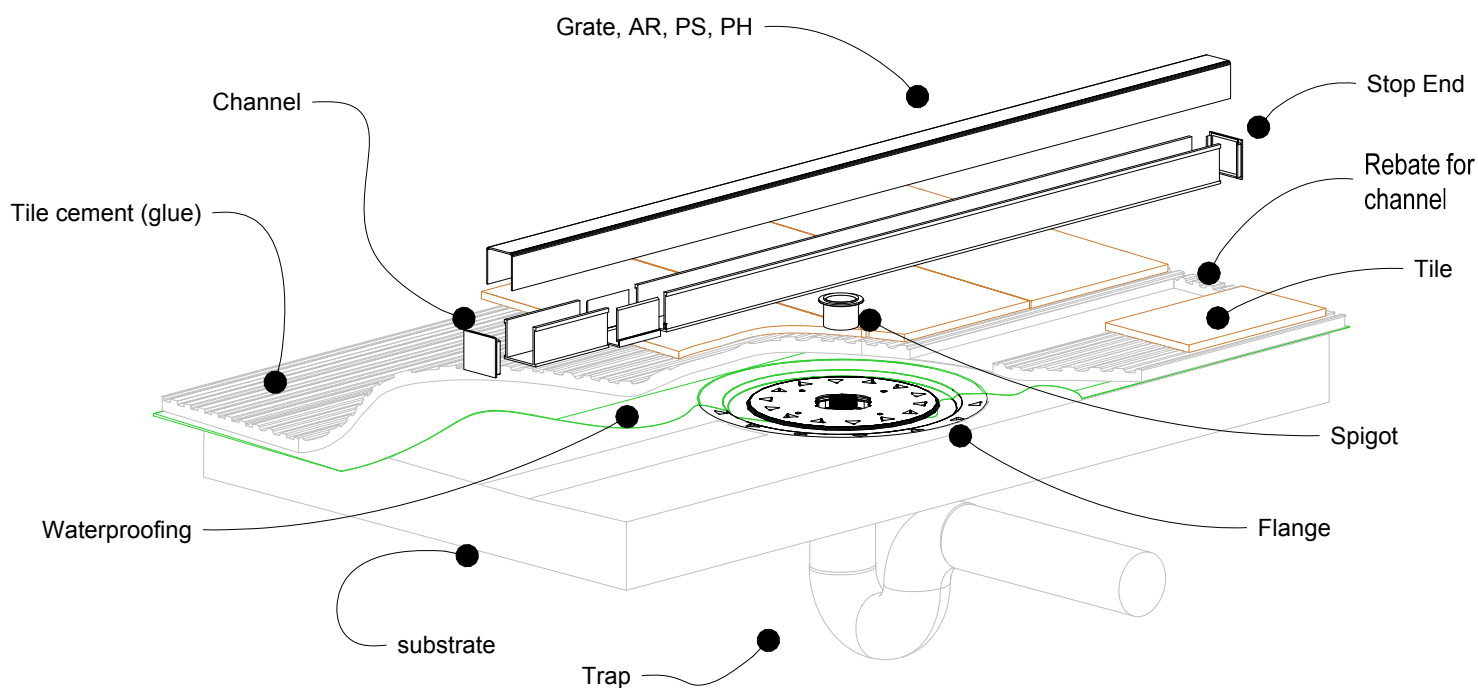
38ARG40

38PSG40

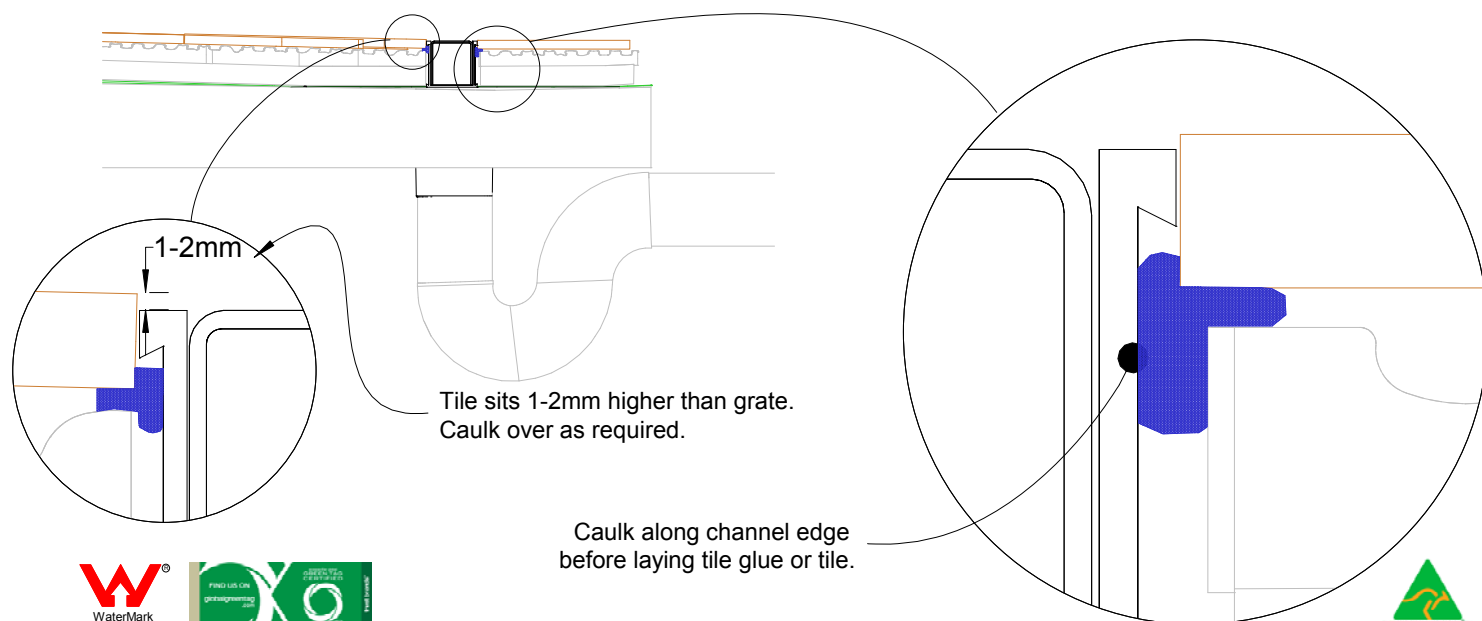
38PHG40



NOTE, refer to AS3500 for specific outlet pipe sizes related to your specific installation.



NOTE, this method requires the channel system to be above and separate from the waterproofing



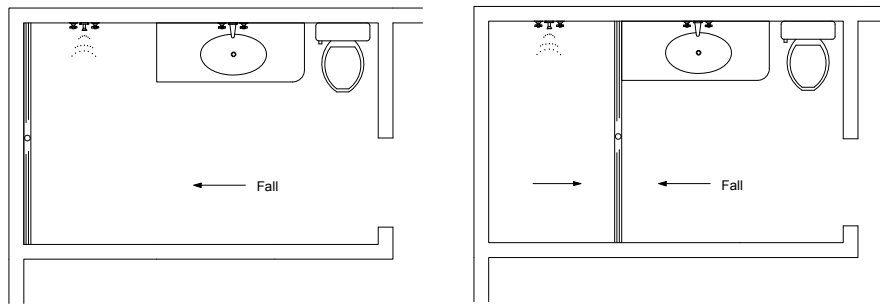
# 38G40 Bathroom DN 50 outlet

Installation sequence for:

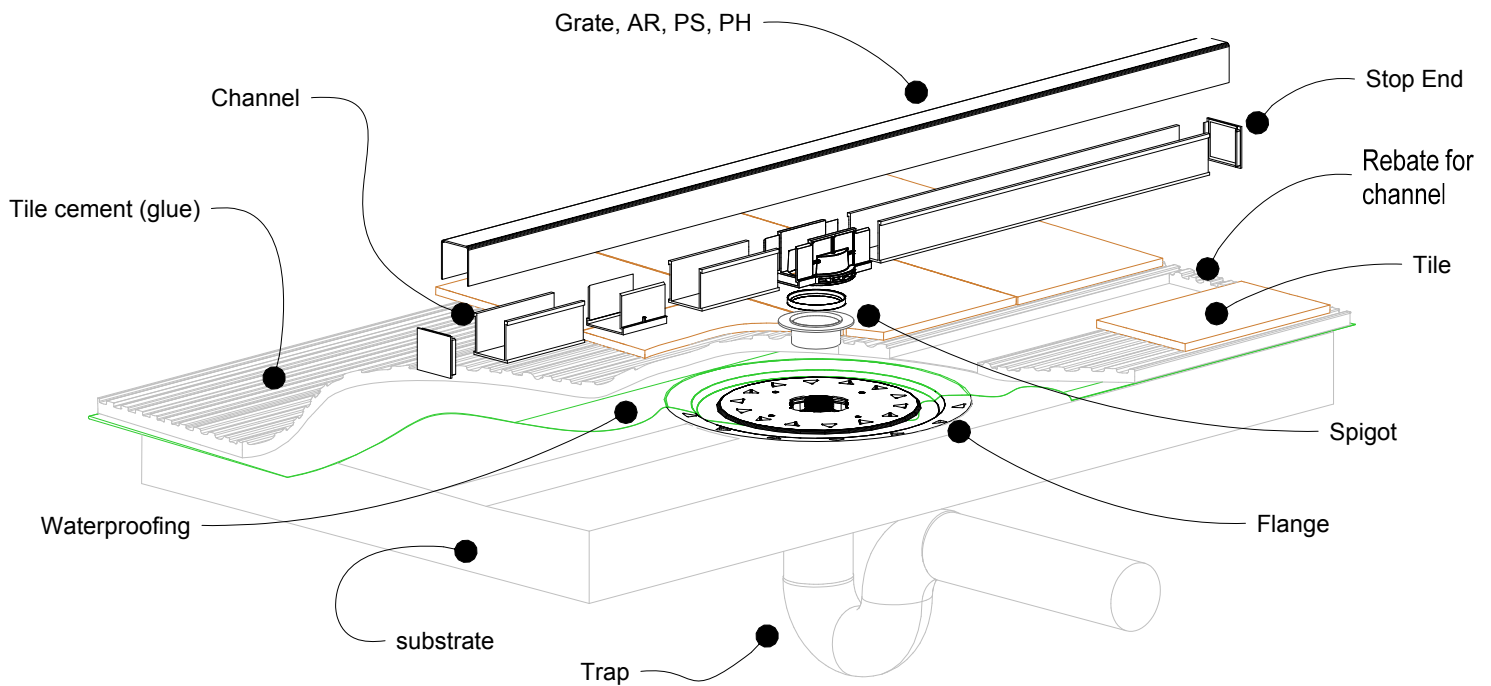
38ARG40

38PSG40

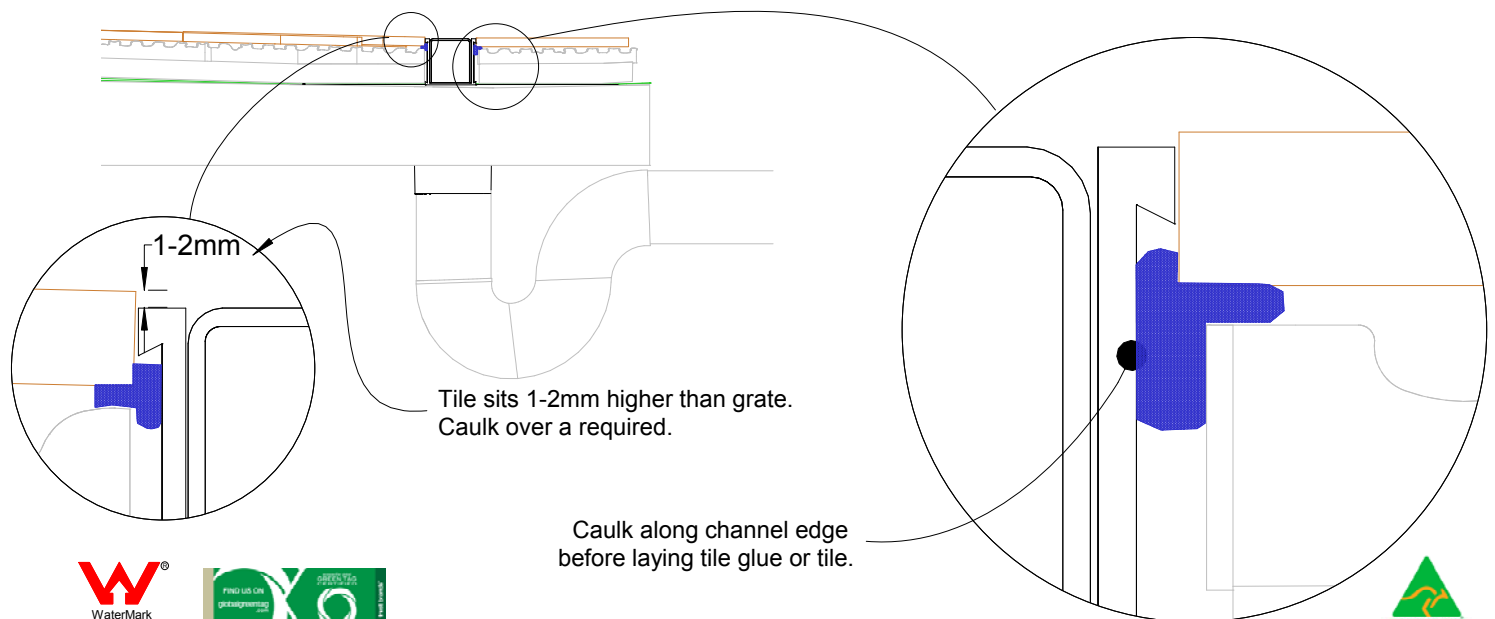
38PHG40



NOTE, refer to AS3500 for specific outlet pipe sizes related to your specific installation.



NOTE, this method requires the channel system to be above and separate from the waterproofing



# 38G40 Concrete Floor or Deck

Installation suggestion for:

38ARG40

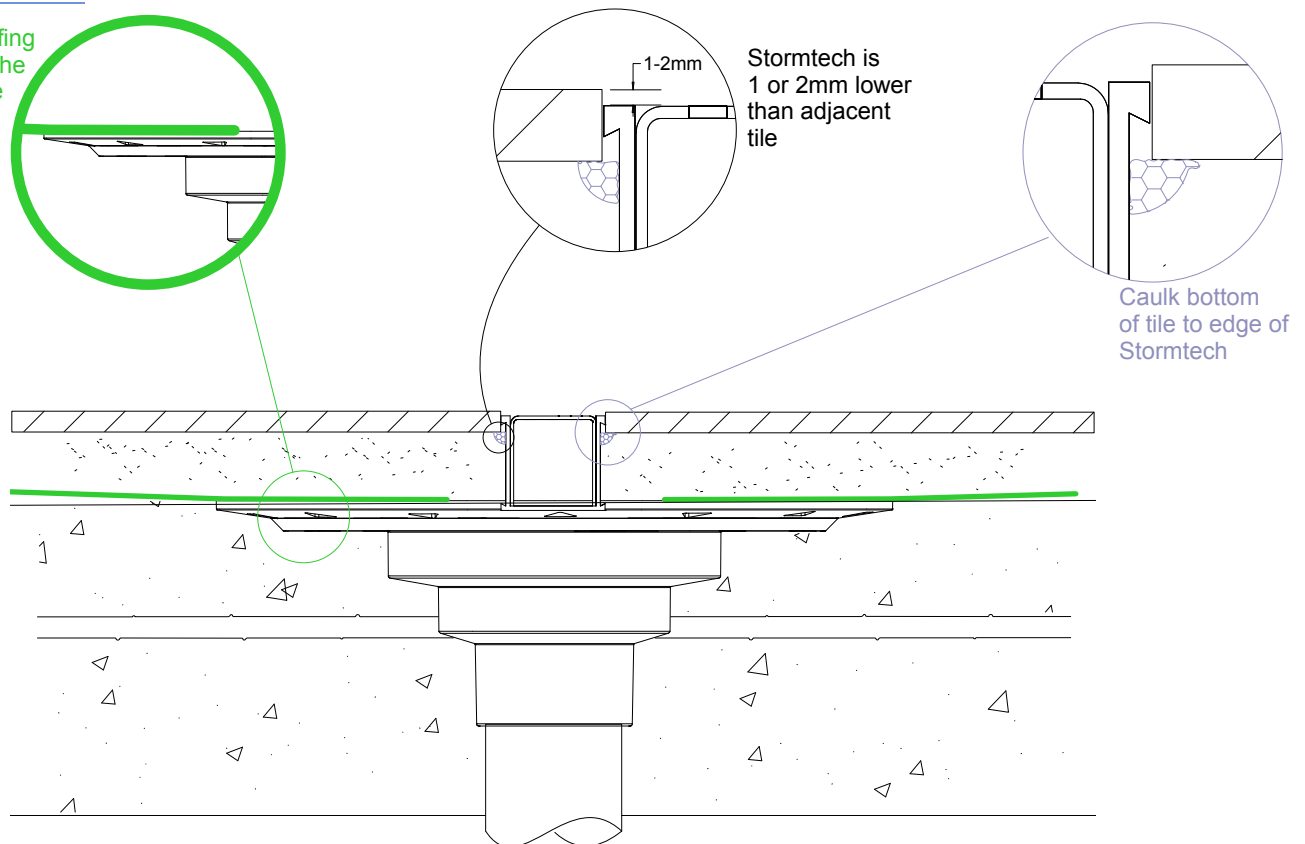
38PSG40

38PHG40

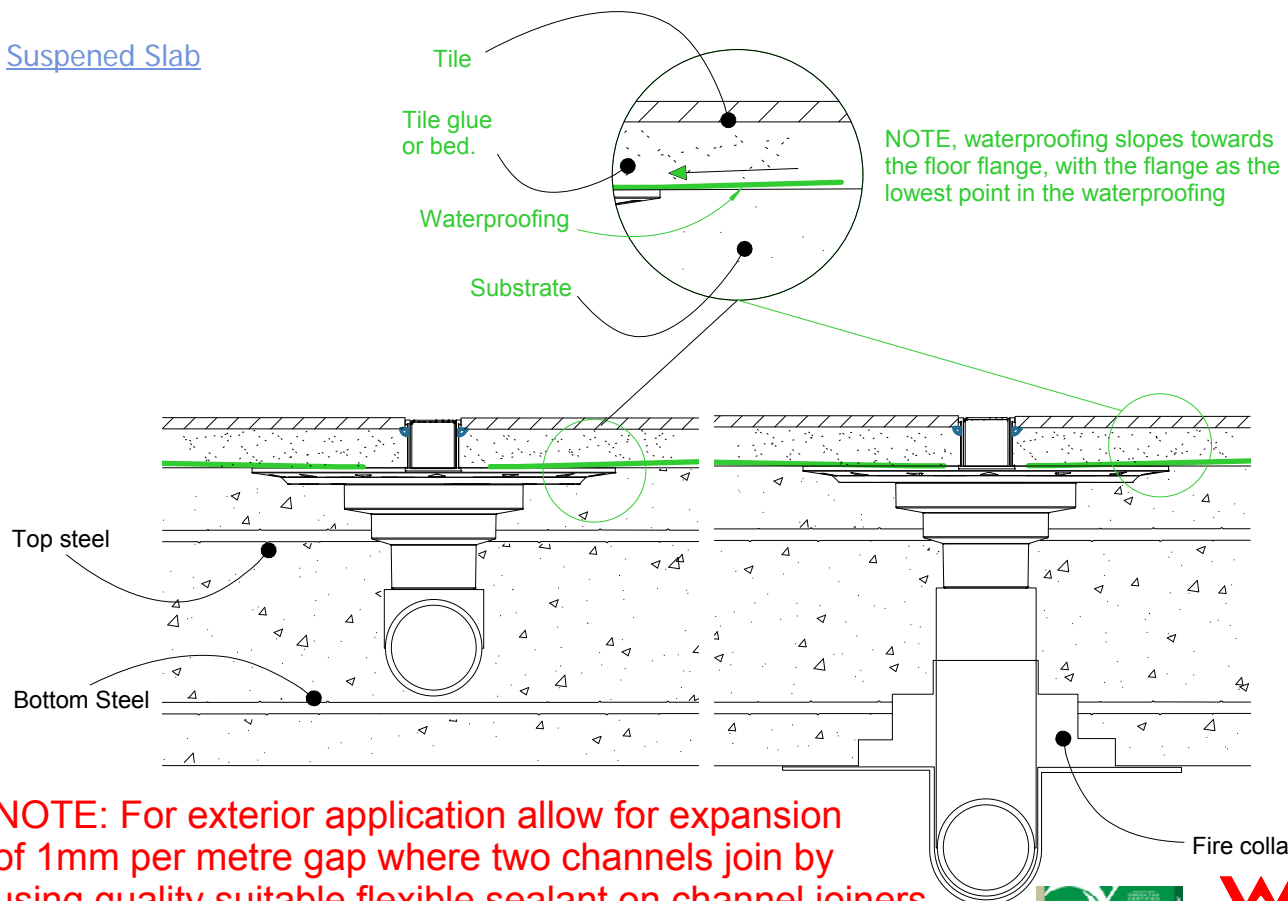


## Slab on Ground

Waterproofing is fixed to the floor flange



## Suspended Slab



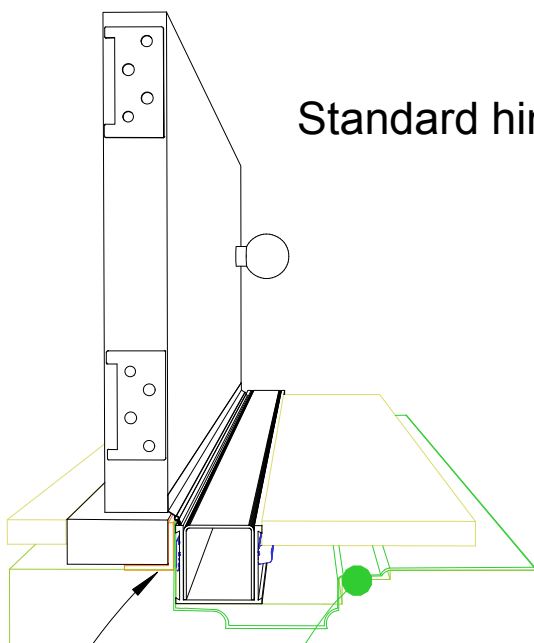
**NOTE: For exterior application allow for expansion of 1mm per metre gap where two channels join by using quality suitable flexible sealant on channel joiners. For ends and outlets use PVC solvent cement.**



# 38G40 Threshold installation suggestion For 38ARG, 38PSG, 38PHG.

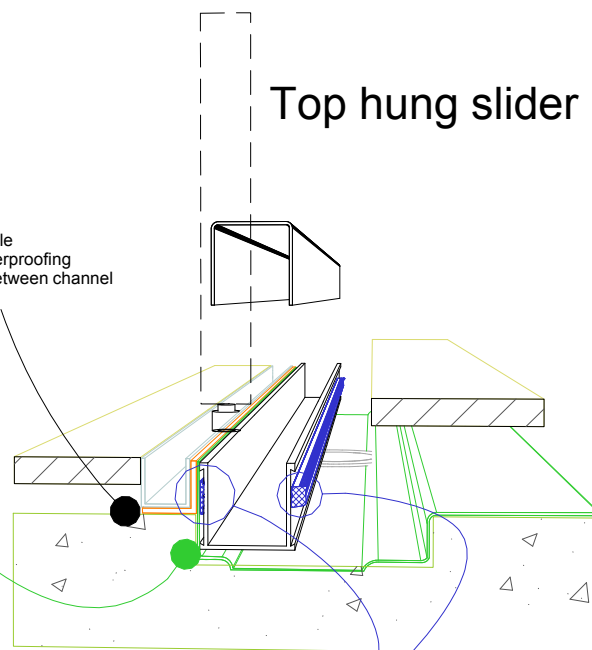


Standard hinged door



Aluminium angle  
to support waterproofing  
and junction between channel  
and door sil.

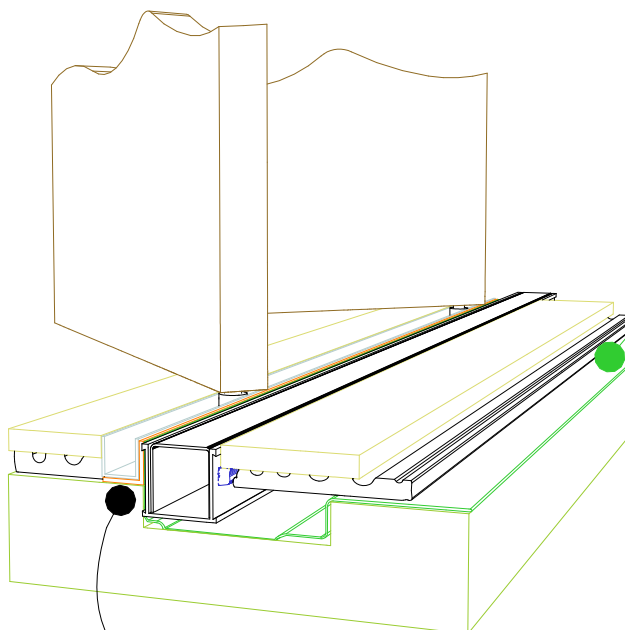
Top hung slider



Aluminium angle  
to support waterproofing  
and junction between channel  
and door track.

Waterproofing

Bi-fold door



Aluminium angle  
to support waterproofing  
and junction between channel  
and door track.

For all types of threshold  
installation ensure both sides  
of the channel are sealed  
before laying tile.

**NOTE, ALWAYS ensure the  
waterproofing is completed  
before laying the Stormtech.**

NOTE, ensure weather strip  
is used on the appropriate  
side of the door to ensure  
drafts and moisture are  
minimised.



# 38G40 TIMBER FLOOR/DECK

Installation suggestion for:

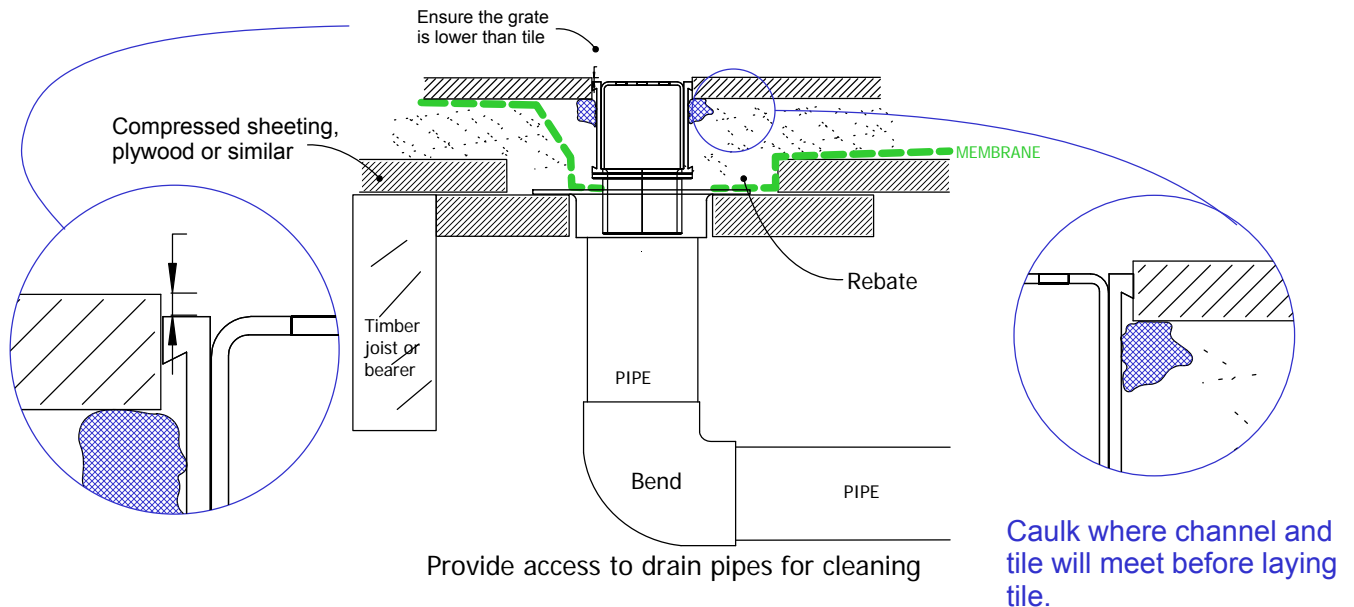
38ARG40

38PSG40

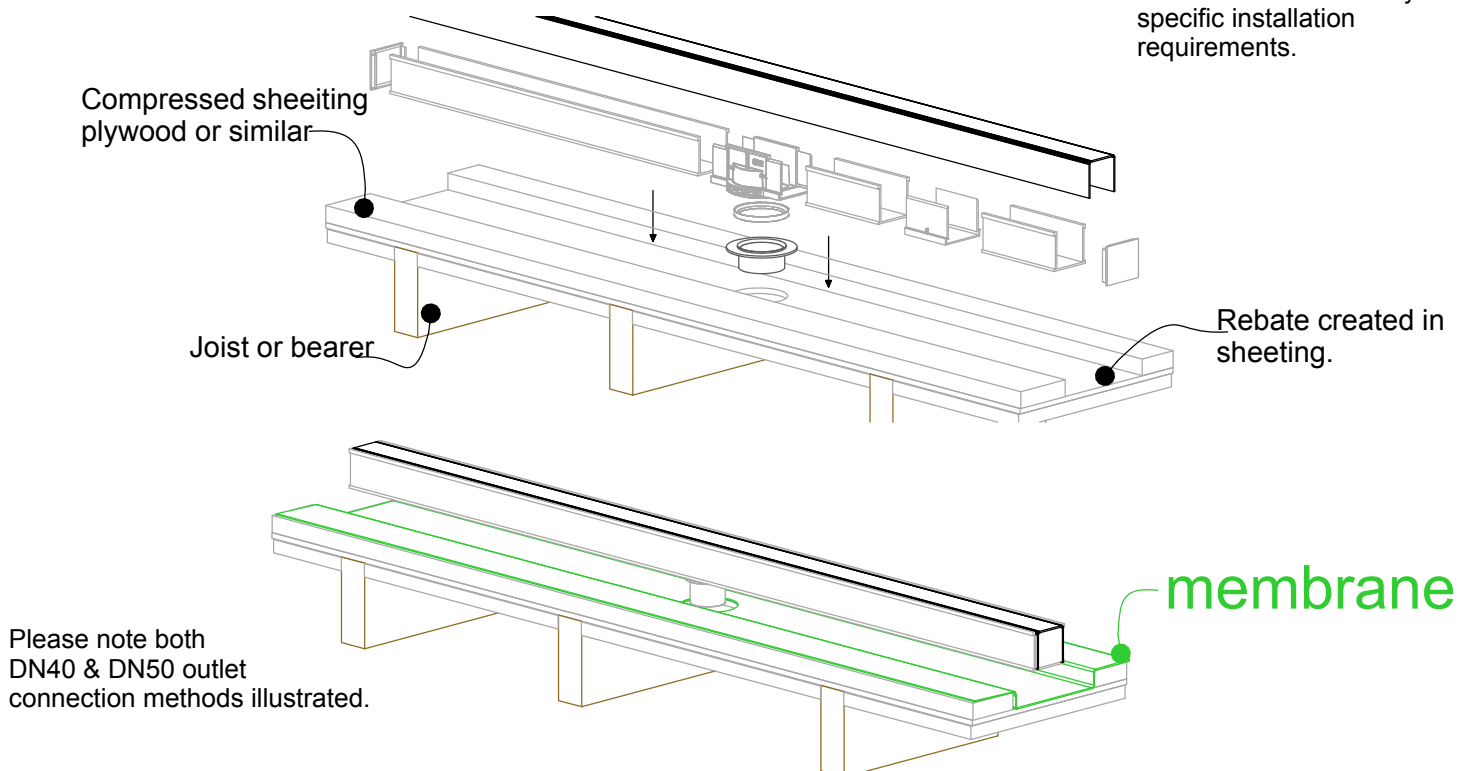
38PHG40



## When 38G40 is running parallel to joist/bearer



## When 38G40 is running perpendicular to joist/bearer



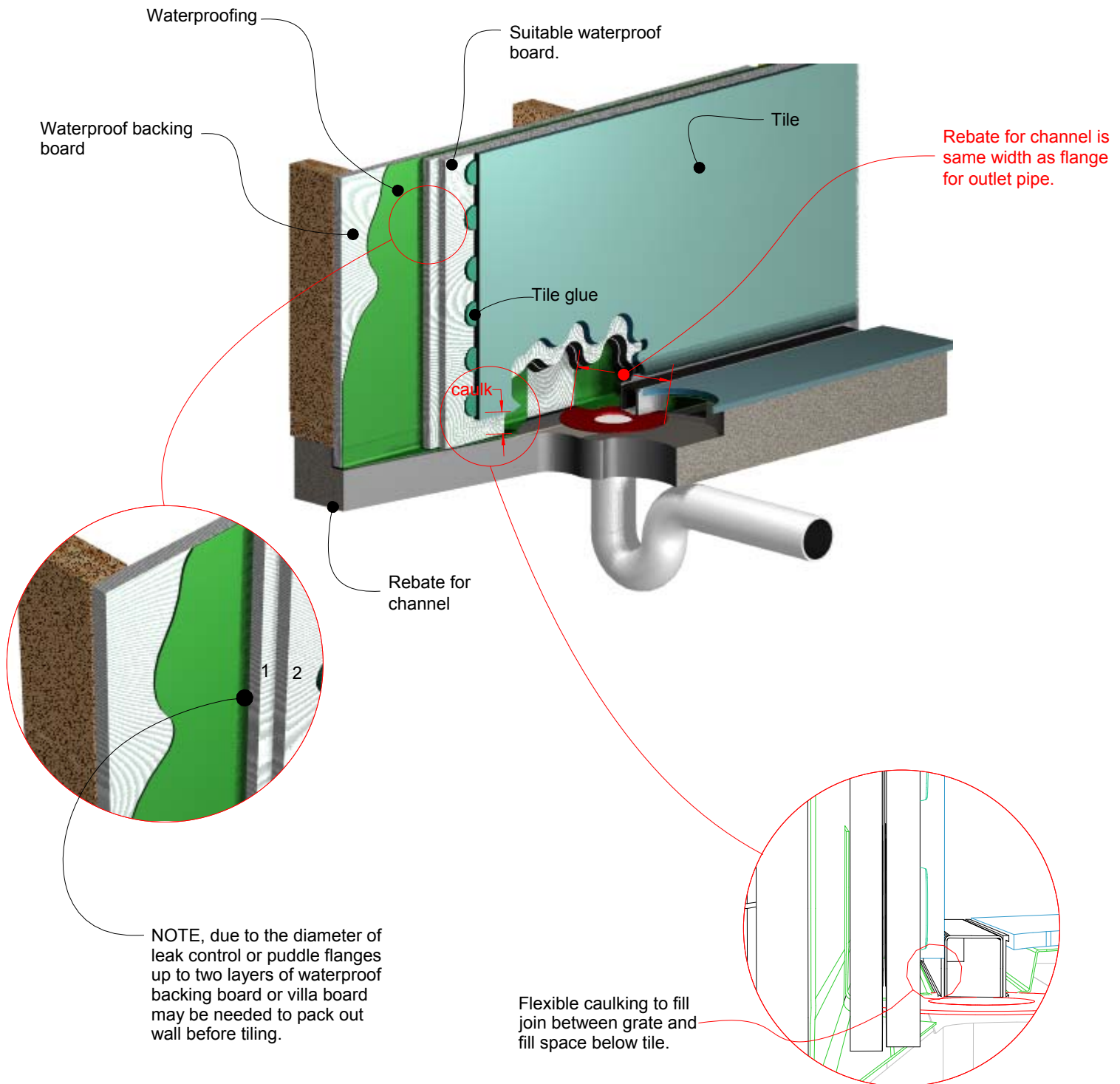
Be sure to check with local relevant authorities for your specific installation requirements.

**NOTE: For exterior application allow for expansion of 1mm per metre by using quality suitable flexible sealant on channel joins. Use PVC solvent cement and primer for ends and outlets.**





# 38G40 Against Wall. For 38ARG, 38PSG, 38PHG



Visit **stormtech.com.au**



**Stormtech**<sup>TM</sup>

22 Norfolk Avenue, South Nowra, NSW 2541 Australia

Phone 1300 653 403 Email [info@stormtech.com.au](mailto:info@stormtech.com.au)

