

ARCHITECTURAL **GRATES + DRAINS**



# 65PSG40

## Linear Drainage System

Stormtech is the only linear drainage system available with full  
Greentag and Watermark certification across our complete product range.

**Telephone** 1300 653 403 | **Web** [stormtech.com.au](http://stormtech.com.au)





ARCHITECTURAL  
GRATES + DRAINS



# 65PSG40

## Linear Drainage System



**Code** 65PSG40

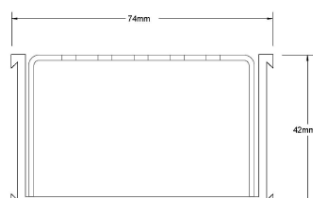
**Range** 65

**Grate Style** PS

**Category** Modular Kits

**Channel Material** uPVC

**Steel Grade** 316



Grates longer than 1500mm supplied in sections.  
Tile Inserts longer than 1200mm supplied in sections.  
Channels over 3000mm supplied in sections with joiner.

The 65PSG40 is a Punched Slot grate design.

The 65PSG40 is a modular drainage kit with stainless steel grate(s), a uPVC drainage channel and fittings. It is size adjustable and will be assembled at the time of installation.

The grate(s) are manufactured from 316 marine grade stainless steel and the channel and fittings from uPVC.

Kits longer than 3000mm are available on request.

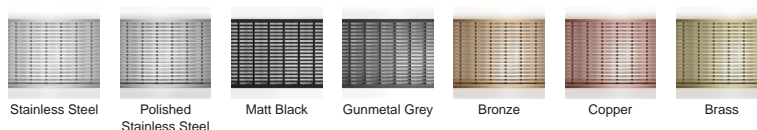
Please be aware that depending on the installation environment, for a pool installation or close to a surf beach, you may need to have your stainless steel grates electropolished.

**Refer to AS3500 for outlet pipe sizes specific to your installation.**

### SPECIFICATIONS + DIMENSIONS

|                      |   |
|----------------------|---|
| <b>Channel Width</b> | 74mm  |
| <b>Channel Depth</b> | 42mm  |
| <b>Length(s)</b>     | 900mm 1000mm 1200mm 1500mm<br>1800mm 1900mm 2000mm 2200mm<br>2400mm 2700mm 3000mm |
| <b>Outlet Size</b>   | DN40, DN50  |

### STORMTECH COLOUR FINISHES



Electroplate finishes subject to natural variation with time and local environment.

### PRODUCT APPLICATIONS

Bathroom Drainage  
Aged / Health Care Drainage  
Balcony Drainage  
Commercial Drainage  
Courtyard / Patio Drainage  
Pool and Spa Area Drainage

Hospitality Drainage  
Paved Area Drainage  
Shower Drainage  
Multi-Residential Drainage  
Special Needs Drainage  
Threshold Drainage



Copyright © Stormtech Pty Ltd. Patent 733361. Drawings not to scale, please use dimensions shown.

Visit **stormtech.com.au**  
for tools + inspiration.

Phone **1300 653 403**

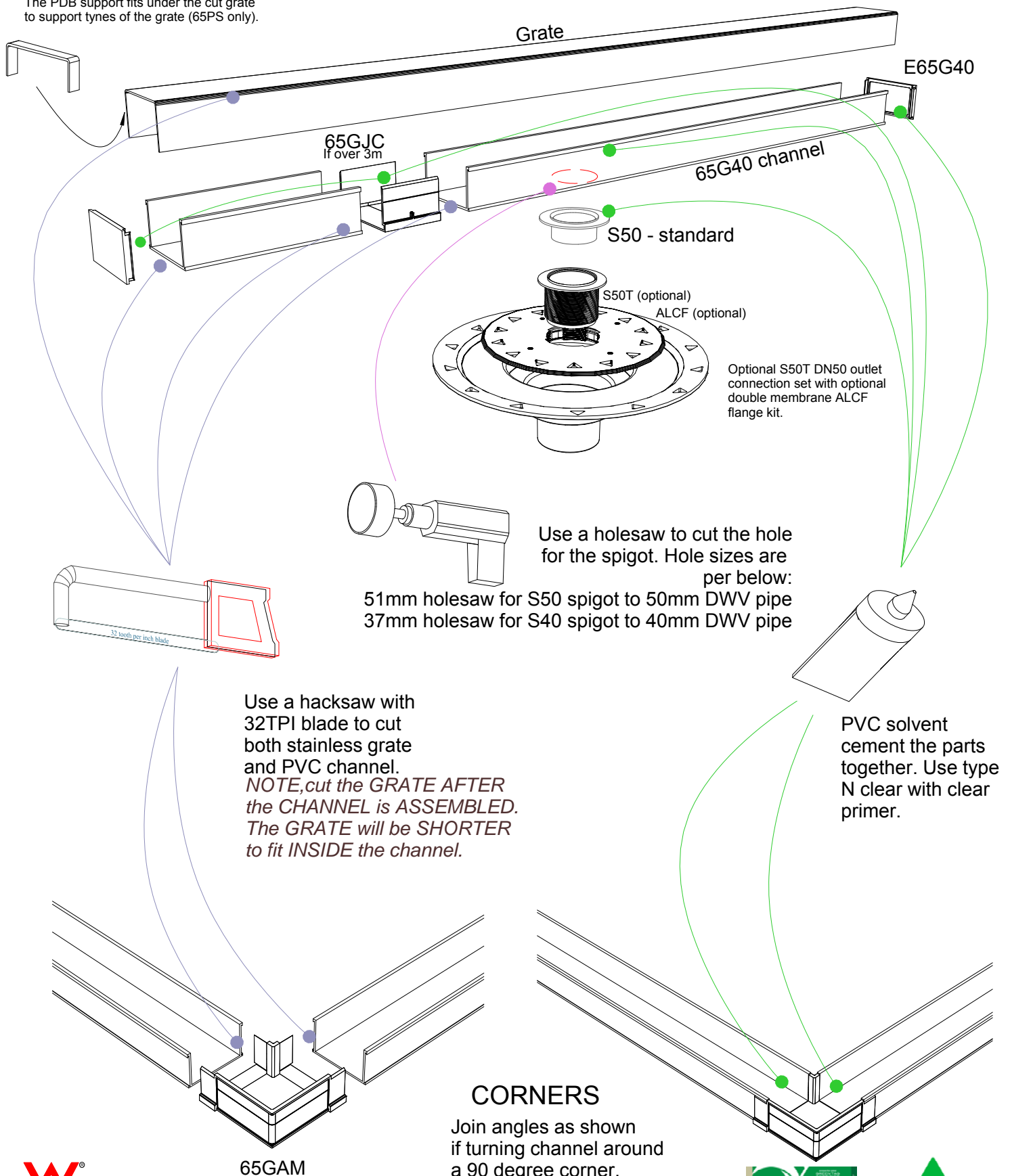
Email **info@stormtech.com.au**

# 65G40 Assembly

For 65ARG40, 65PHG40, 65PSG40,  
65TRG40, and 65TRTiG40.

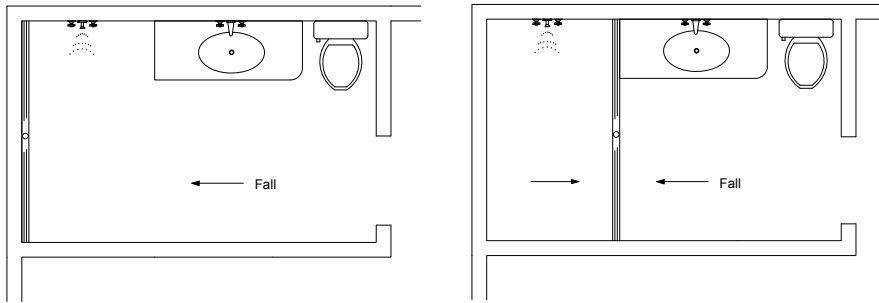


The PDB support fits under the cut grate to support tynes of the grate (65PS only).

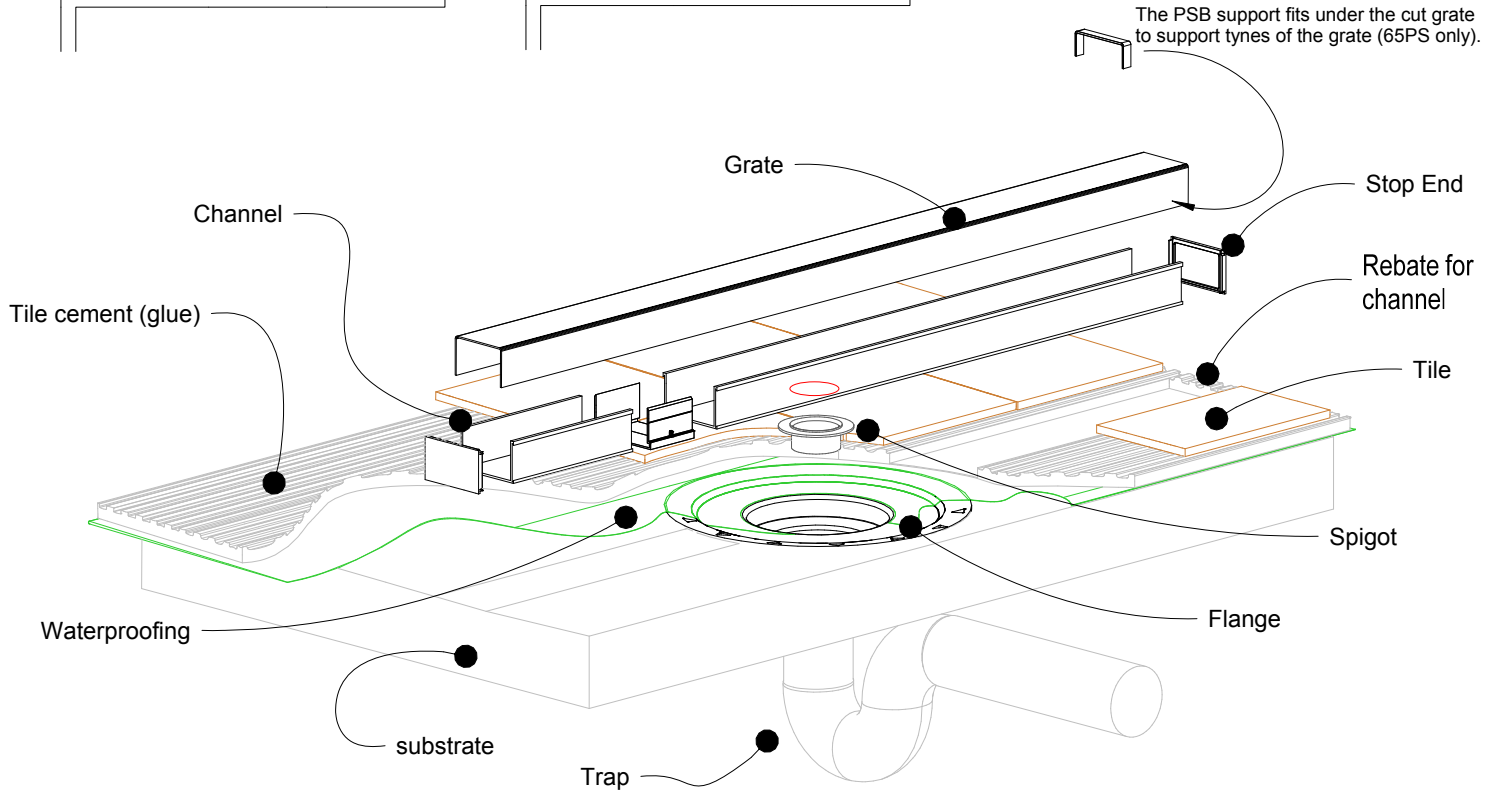


# 65G40 Bathroom

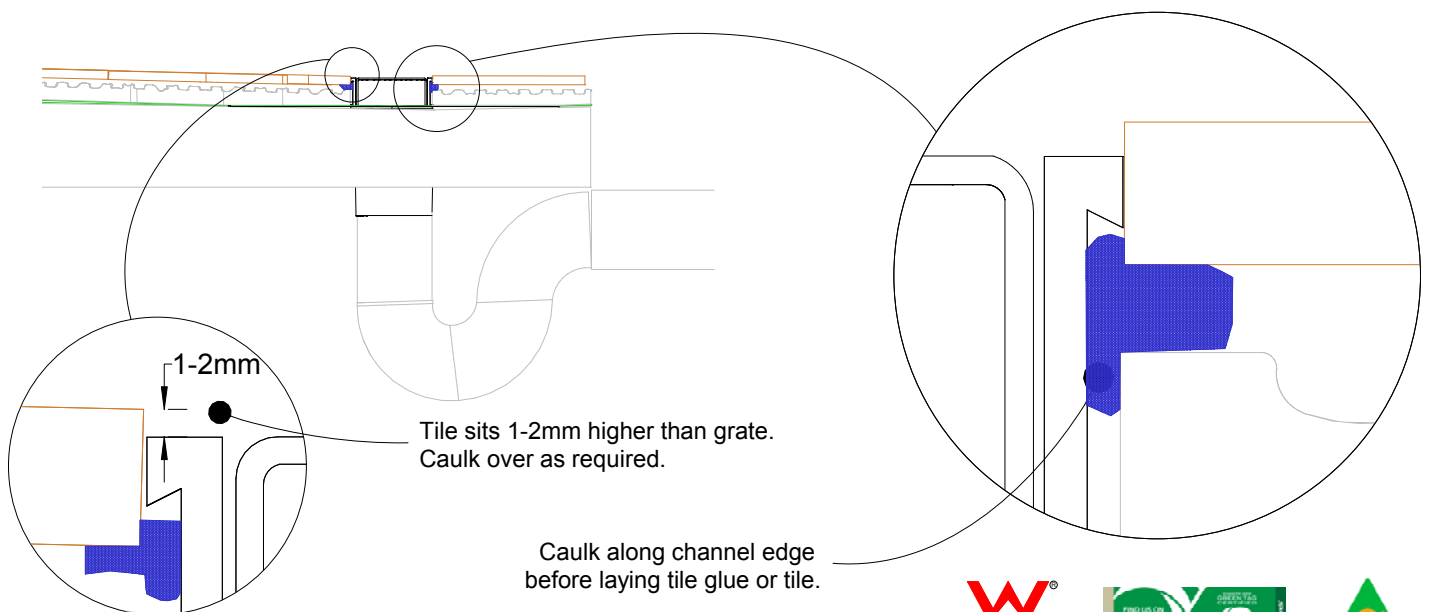
For 65ARG40, 65PHG40, 65PSG40, 65TRG40, and 65TRTiG40.



NOTE, refer to AS3500 for specific outlet pipe sizes related to your specific installation.



NOTE, this method requires the channel system to be ABOVE and SEPARATE from the WATERPROOFING.



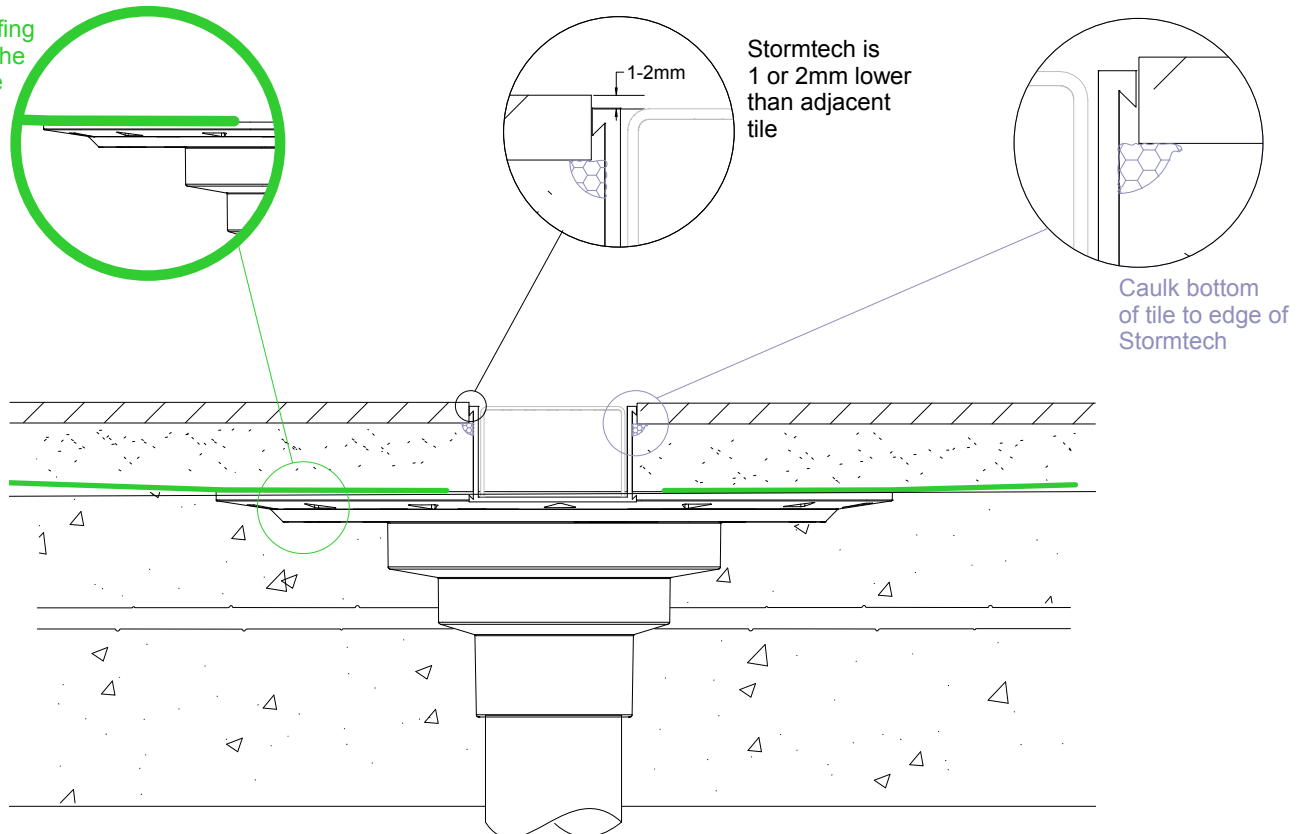
# 65G40 Concrete Floor or Deck

For 65ARG40, 65PHG40, 65PSG40, 65TRG40, and 65TRTiG40.

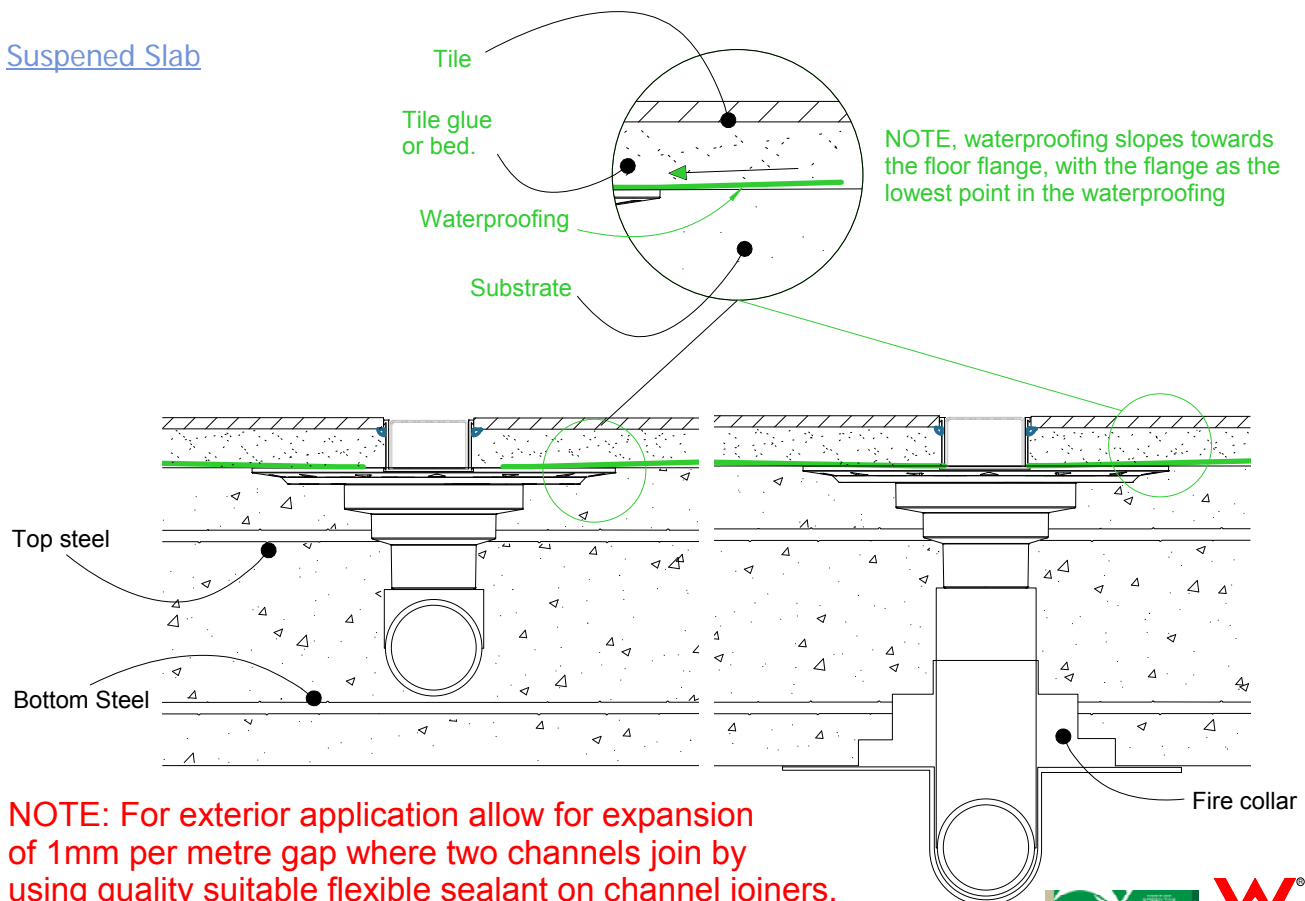


## Slab on Ground

Waterproofing is fixed to the floor flange



## Suspended Slab



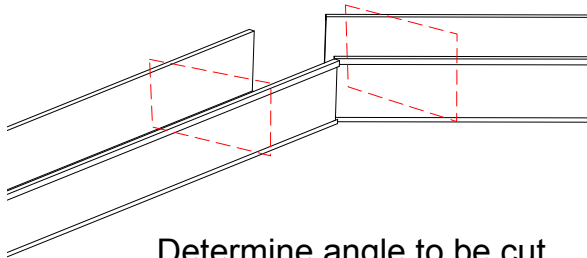
**NOTE: For exterior application allow for expansion of 1mm per metre gap where two channels join by using quality suitable flexible sealant on channel joiners. Use PVC solvent cement and primer on ends and outlets.**



# 65G40 Off-Set Corners

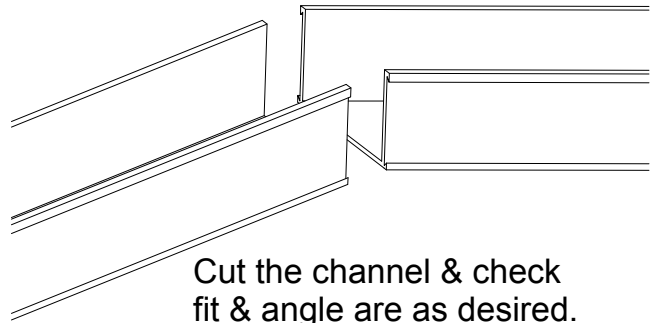
When assembling channel for corners other than 90 degrees, the following fittings and method is suggested.

1



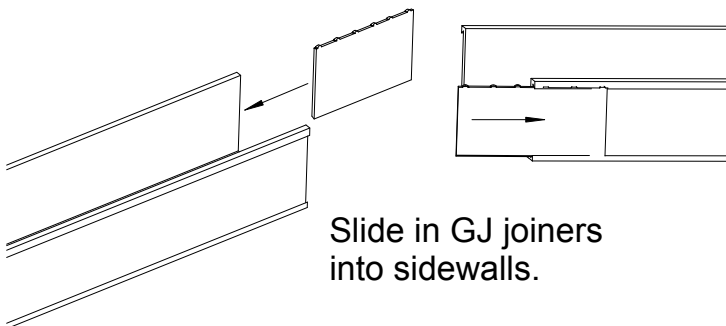
Determine angle to be cut

2



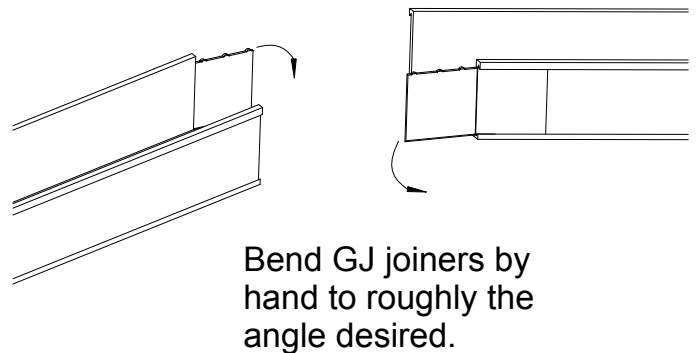
Cut the channel & check fit & angle are as desired.

3



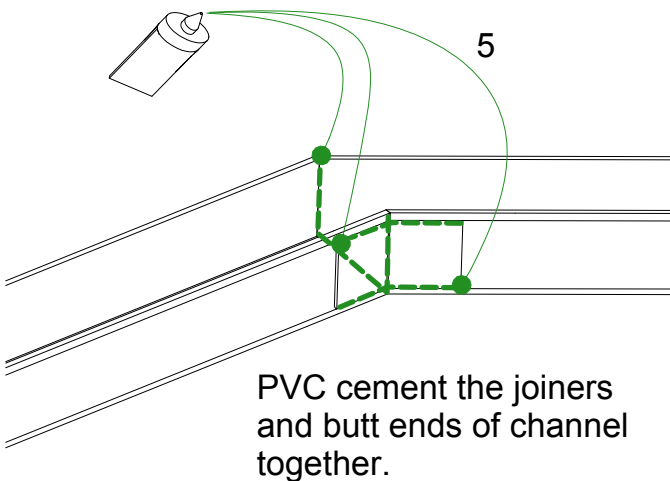
Slide in GJ joiners into sidewalls.

4



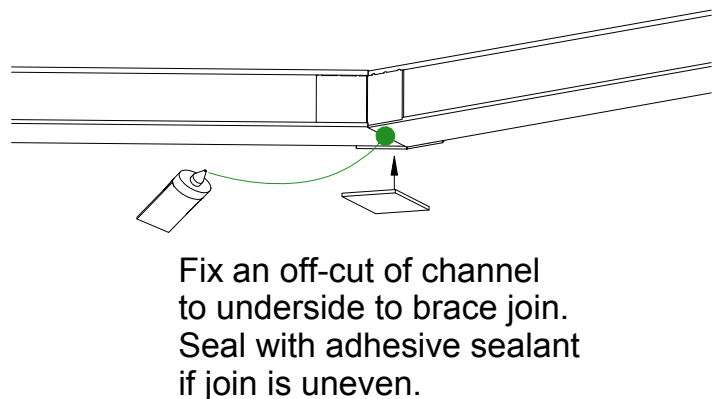
Bend GJ joiners by hand to roughly the angle desired.

5



PVC cement the joiners and butt ends of channel together.

6



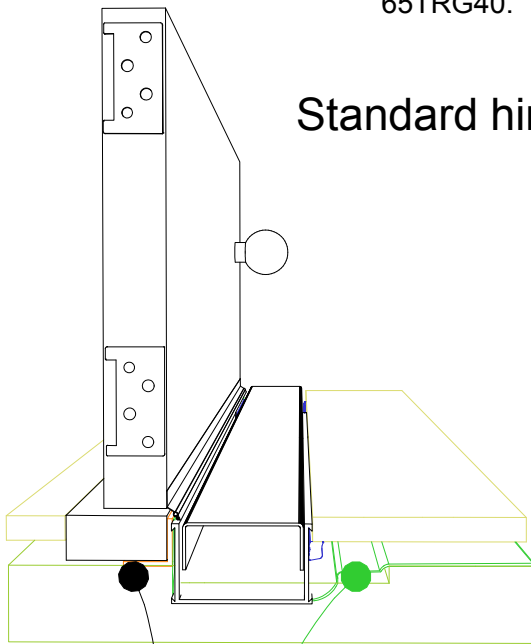
Fix an off-cut of channel to underside to brace join. Seal with adhesive sealant if join is uneven.

# 65G40 Threshold installation suggestion

For 65ARG40, 65PHG40, 65PSG40,  
65TRG40.



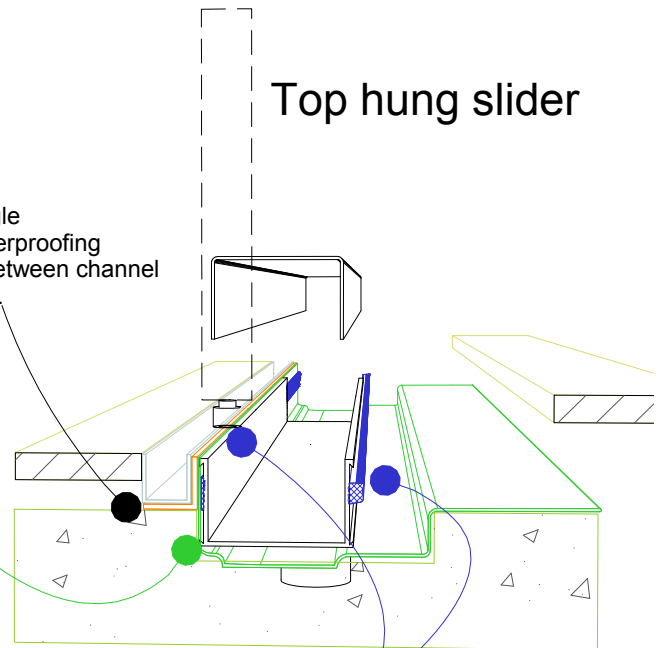
## Standard hinged door



Aluminium angle  
to support waterproofing  
and junction between channel  
and door sill.

## Waterproofing

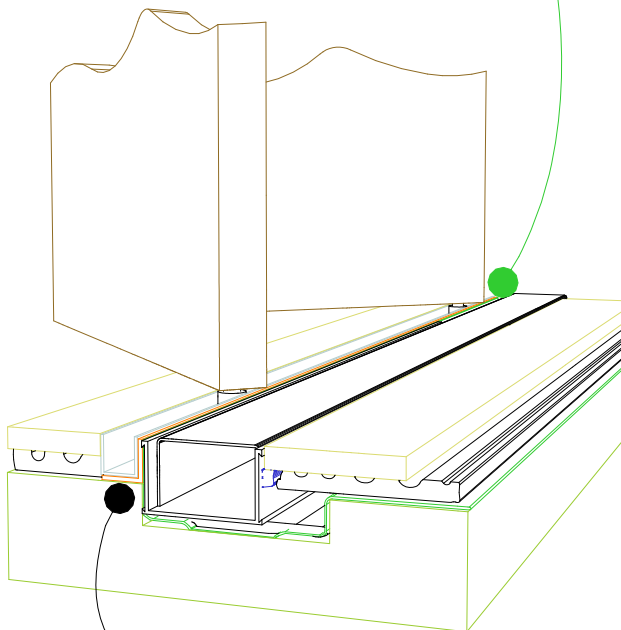
## Top hung slider



Aluminium angle  
to support waterproofing  
and junction between channel  
and door track.

For all types of threshold  
installation ensure both sides  
of the channel are sealed  
before laying tile.

## Bi-fold door



Aluminium angle  
to support waterproofing  
and junction between channel  
and door track.

**NOTE, ALWAYS** ensure the  
waterproofing is completed  
before laying the Stormtech.

NOTE, ensure weather strip  
is used on the appropriate  
side of the door to ensure  
drafts and moisture are  
minimised.

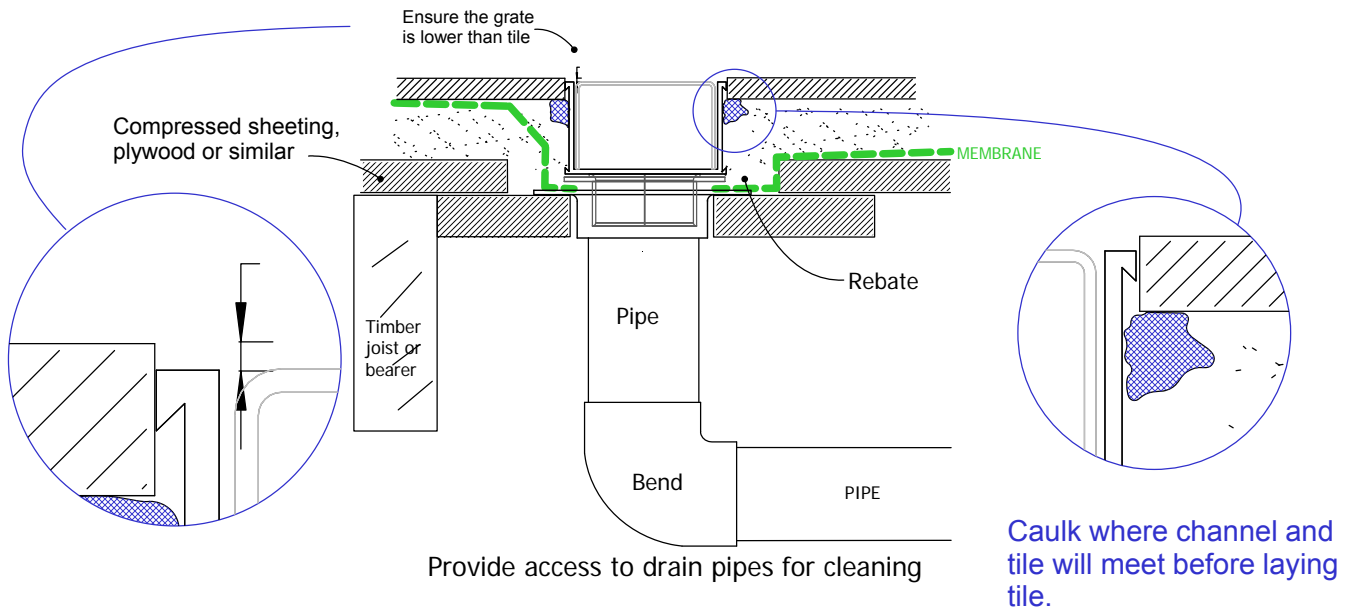


# 65G40 TIMBER FLOOR/DECK

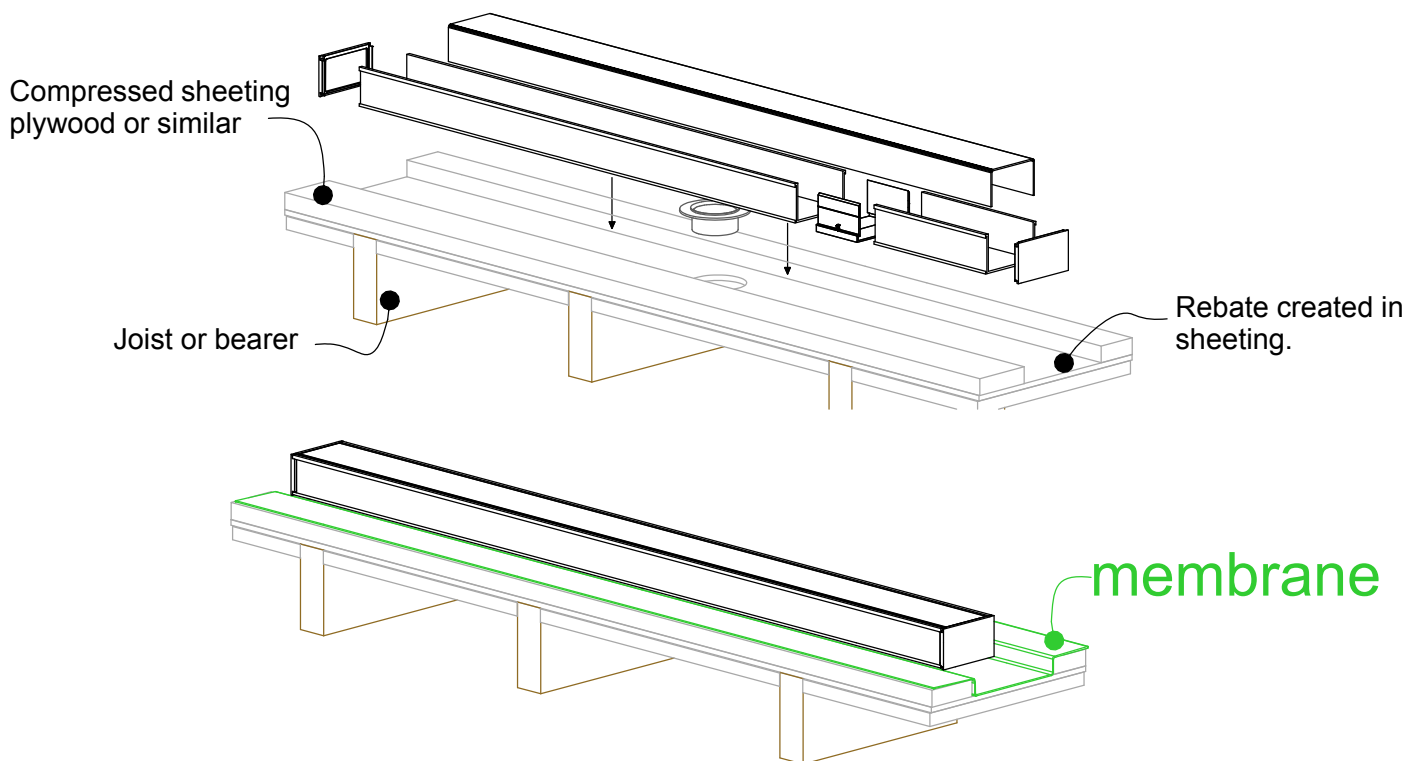
For 65ARG40, 65PHG40, 65PSG40, 65TRG40, and 65TRTiG40.



## When 65G40 is running parallel to joist/bearer



## When 65G40 is running perpendicular to joist/bearer



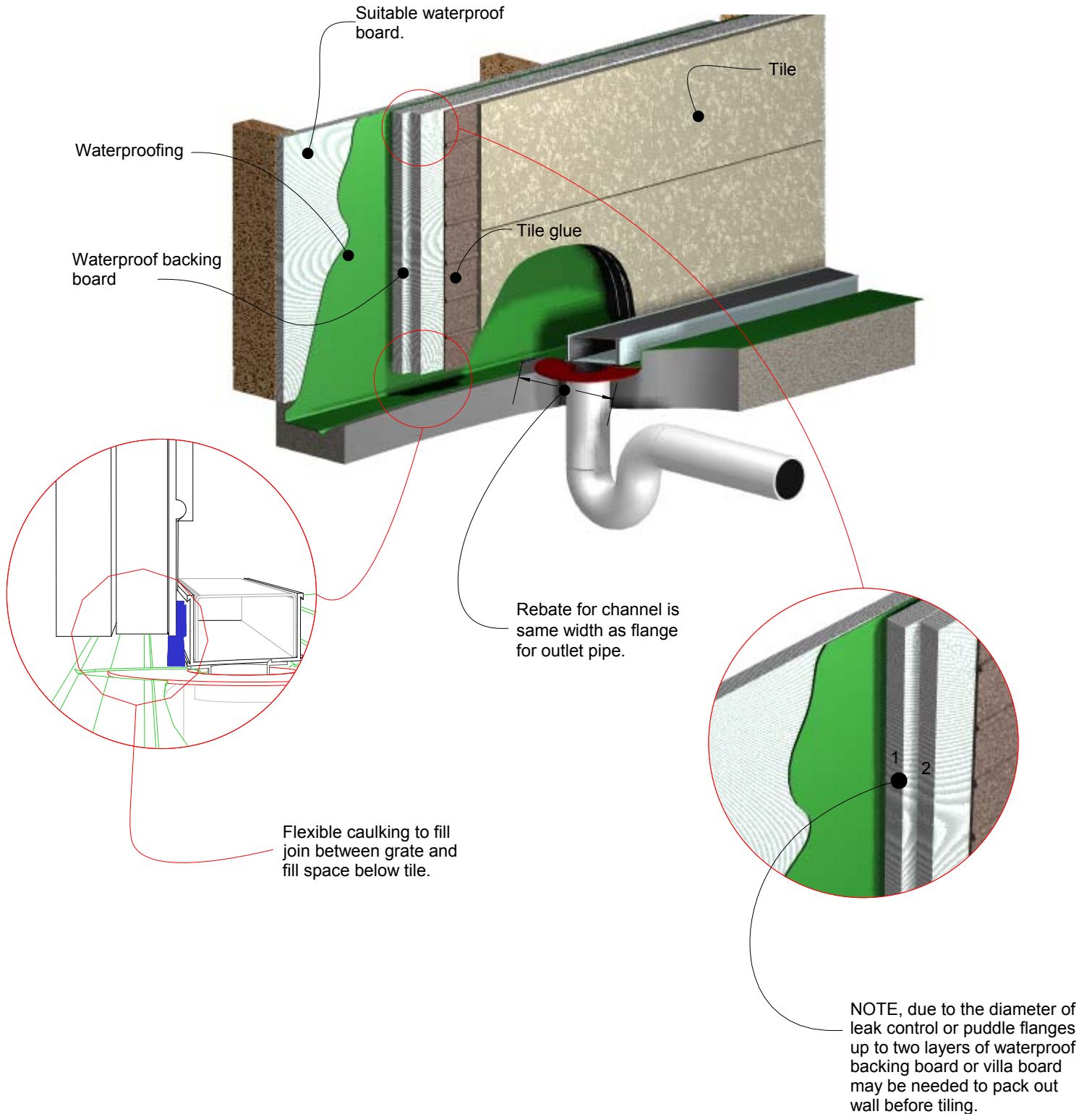
**NOTE: For exterior application allow for expansion of 1mm per metre by using quality suitable flexible sealant on channel joins. Use PVC solvent cement and primer for ends and outlets.**





# 65G40 Against Wall

For 65ARG40, 65PHG40, 65PSG40, 65TRG40, and 65TRTiG40.



Visit **stormtech.com.au**



**Stormtech**<sup>TM</sup>

22 Norfolk Avenue, South Nowra, NSW 2541 Australia

Phone 1300 653 403 Email [info@stormtech.com.au](mailto:info@stormtech.com.au)

