

ARCHITECTURAL **GRATES + DRAINS**



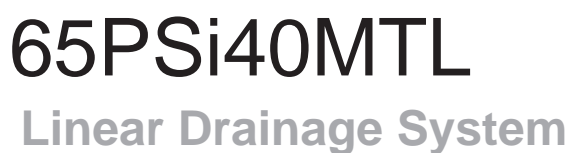
65PSi40MTL

Linear Drainage System

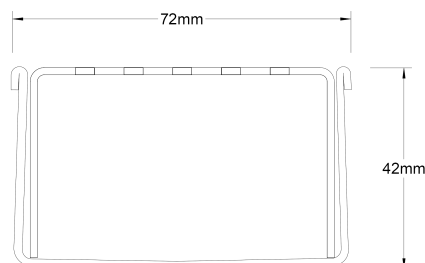
Stormtech is the only linear drainage system available with full
Greentag and Watermark certification across our complete product range.

Telephone 1300 653 403 | **Web** stormtech.com.au





Steel Grade 316



Grates longer than 1500mm supplied in sections.
Tile Inserts longer than 1200mm supplied in sections.
Channels over 3000mm supplied in sections with joiner.

All stainless steel drainage unit made to specified length with specified outlet position.

The 65PS40 is a Punched Slot grate design.

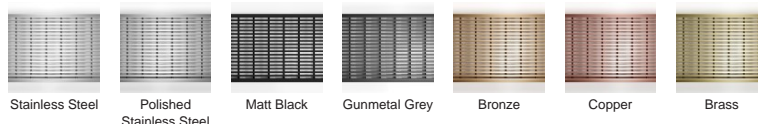
Manufactured from 316 marine grade the 65PS40 is 65mm wide and 40mm deep.

Refer to AS3500 for outlet pipe sizes specific to your installation.

SPECIFICATIONS + DIMENSIONS

Channel Width	72mm
Channel Depth	42mm
Length(s)	As Required
Outlet Size	DN40, DN50, DN65

STORMTECH COLOUR FINISHES



Electroplate finishes subject to natural variation with time and local environment.

PRODUCT APPLICATIONS

Bathroom Drainage
Aged / Health Care Drainage
Balcony Drainage
Commercial Drainage
Courtyard / Patio Drainage
Pool and Spa Area Drainage

Hospitality Drainage
Paved Area Drainage
Shower Drainage
Multi-Residential Drainage
Special Needs Drainage
Threshold Drainage

Copyright © Stormtech Pty Ltd. Patent 733361. Drawings not to scale, please use dimensions shown.



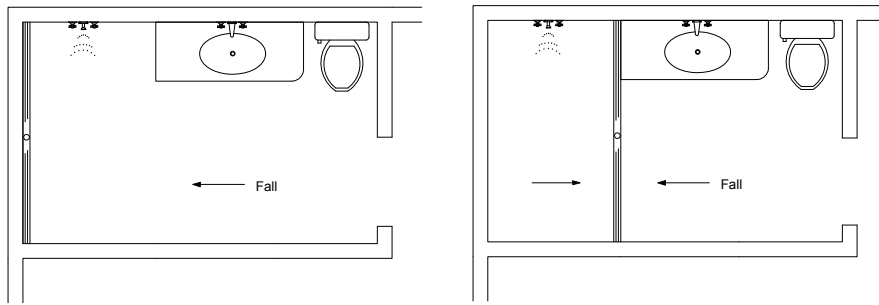
Visit **stormtech.com.au**
for tools + inspiration.

Phone **1300 653 403**

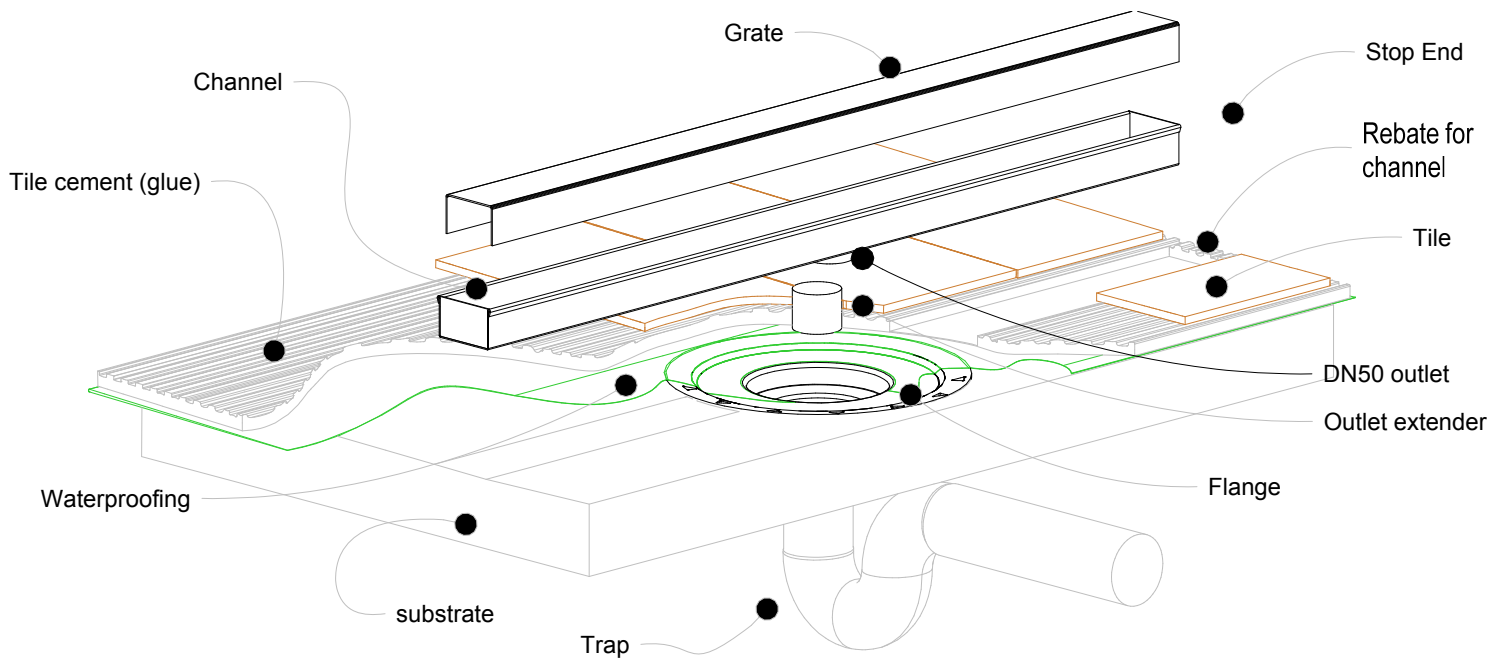
Email **info@stormtech.com.au**

65i40MTL Bathroom

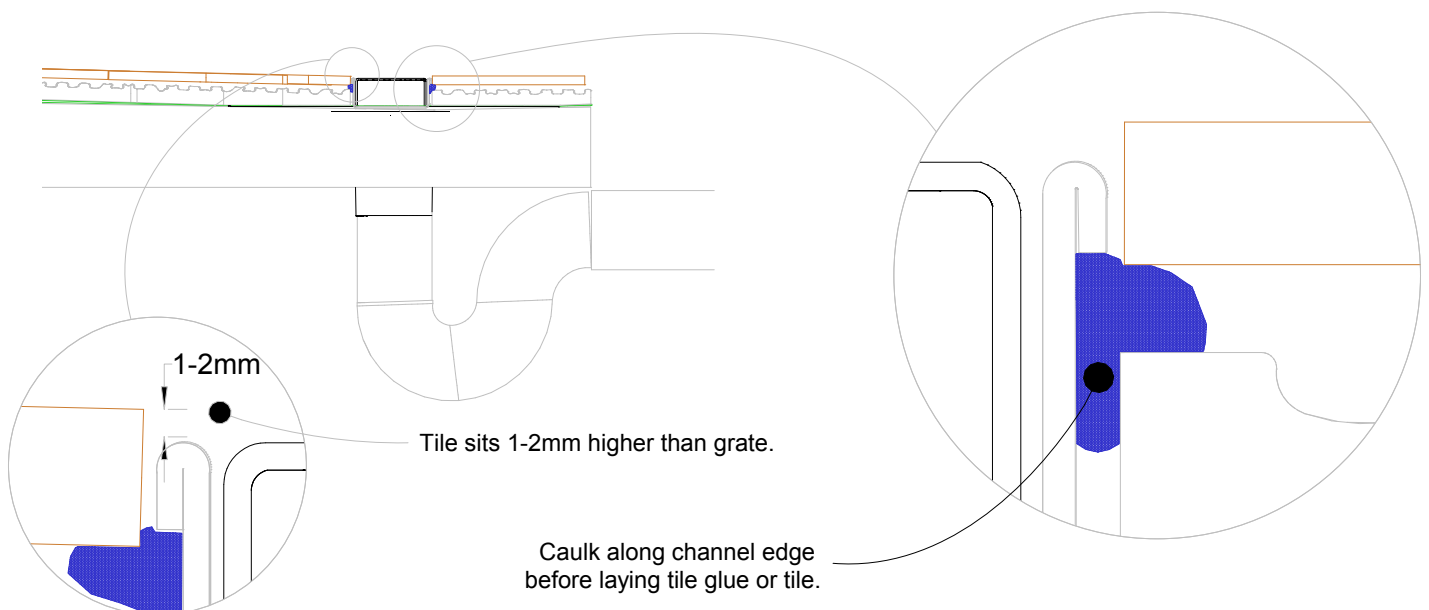
For 65ARi40MTL, 65PHi40MTL, 65PSi40MTL, 65TRi40MTL, 65Tii40MTL.



NOTE, refer to AS3500 for specific outlet pipe sizes related to your specific installation.



NOTE, this method requires the channel system to be ABOVE and SEPARATE from the WATERPROOFING.



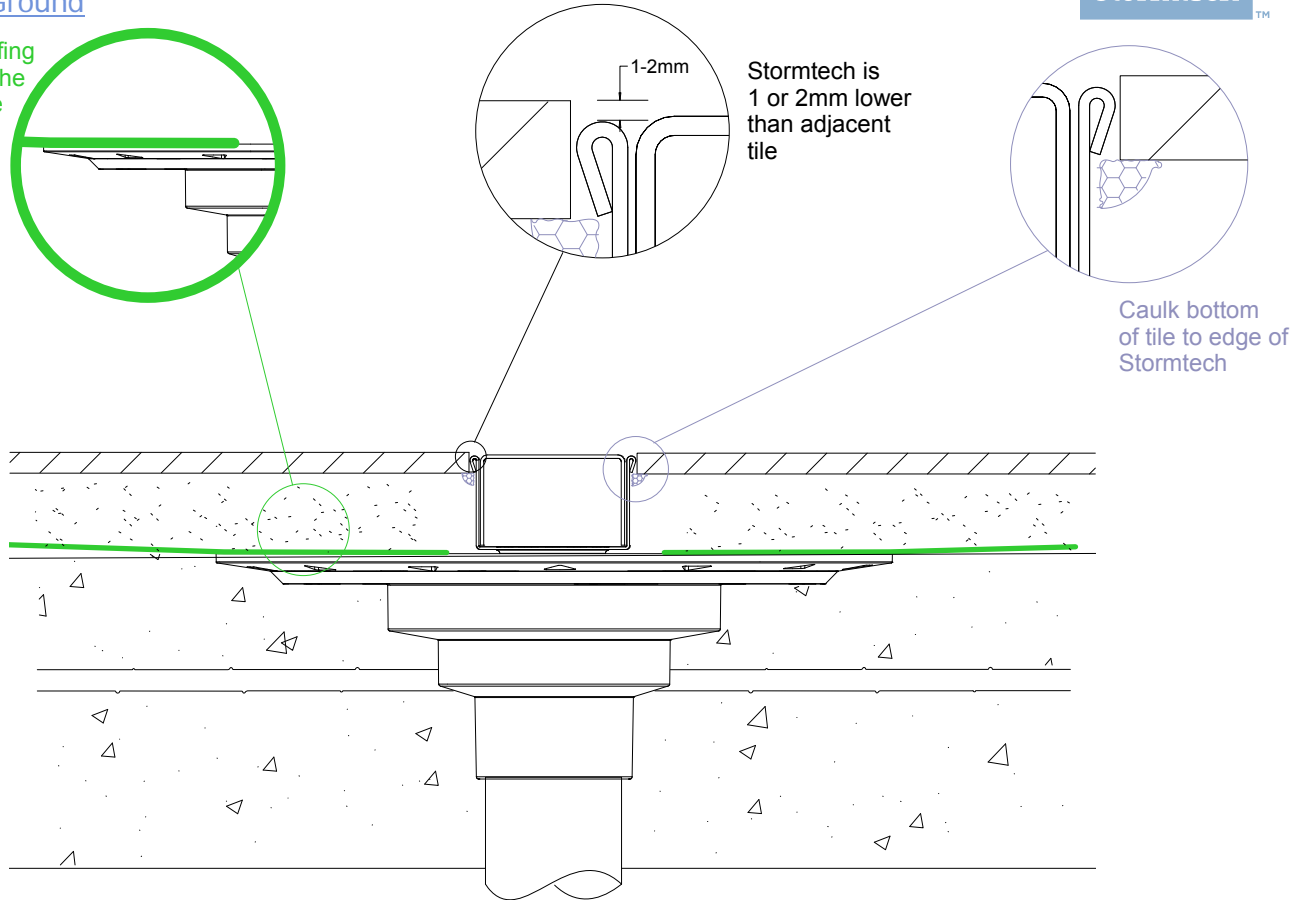
65i40MTL Concrete Floor or Deck

For 65ARi40MTL, 65PHi40MTL, 65PSi40MTL,
65TRI40MTL, 65Tii40MTL.

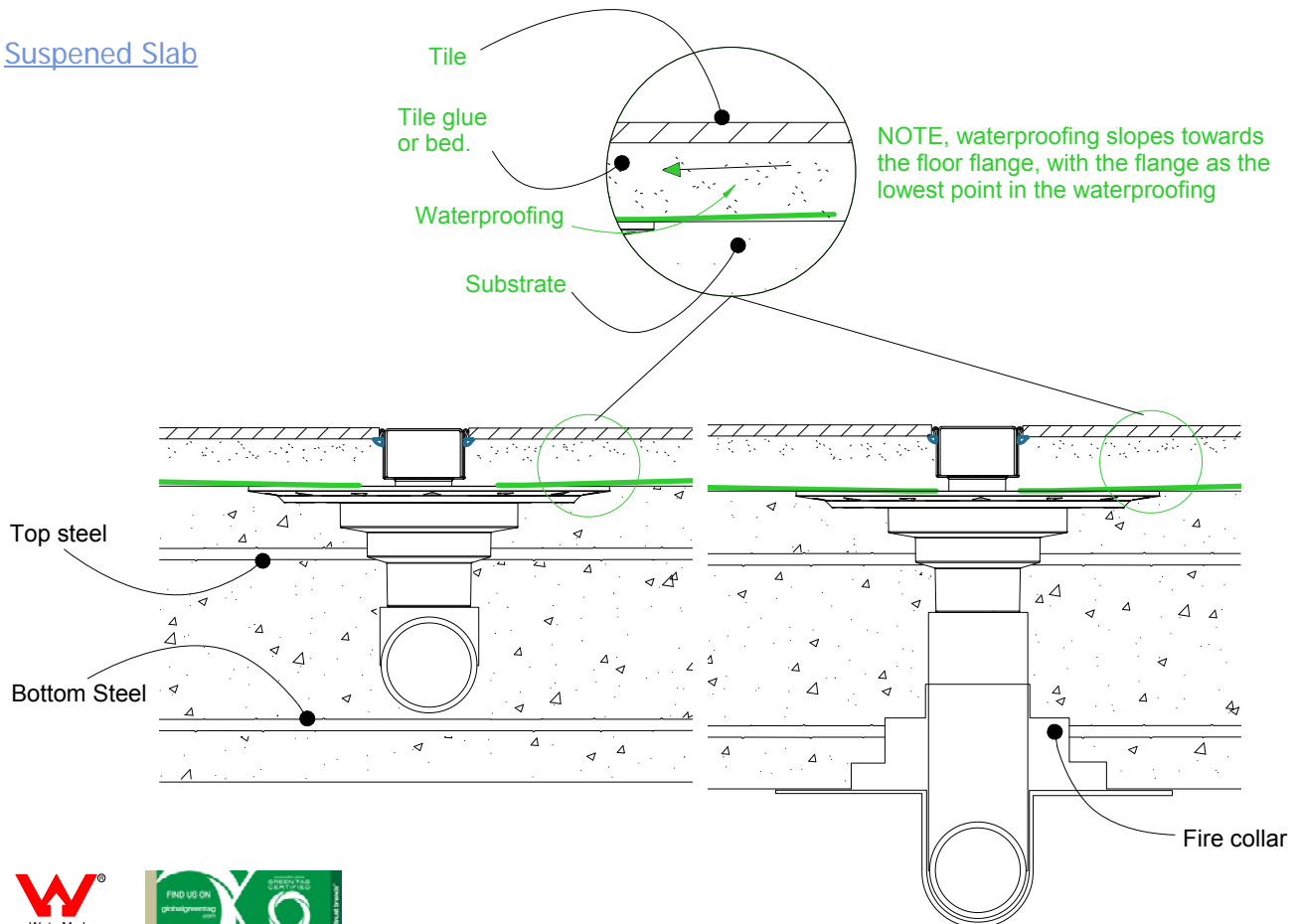


Slab on Ground

Waterproofing
is fixed to the
floor flange



Suspended Slab

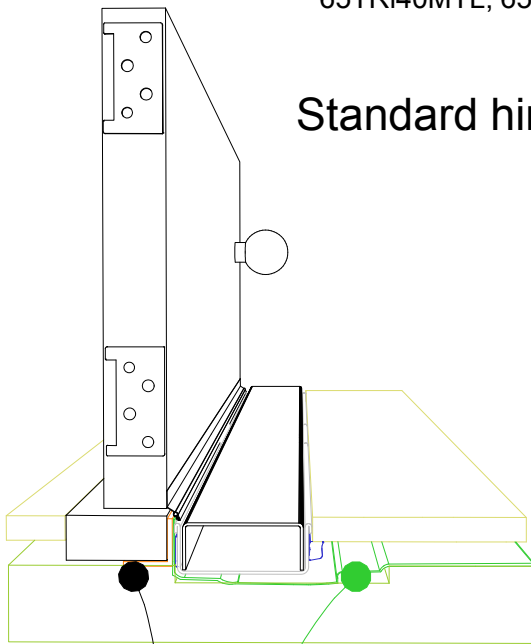


65i40MTL Threshold installation suggestion

For 65ARi40MTL, 65PHi40MTL, 65PSi40MTL,
65TRi40MTL, 65Tii40MTL.



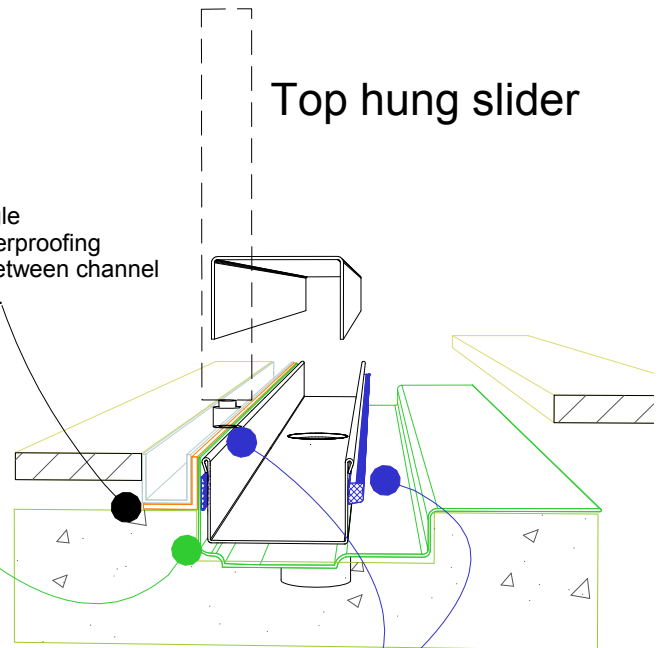
Standard hinged door



Aluminium angle
to support waterproofing
and junction between channel
and door sill.

Waterproofing

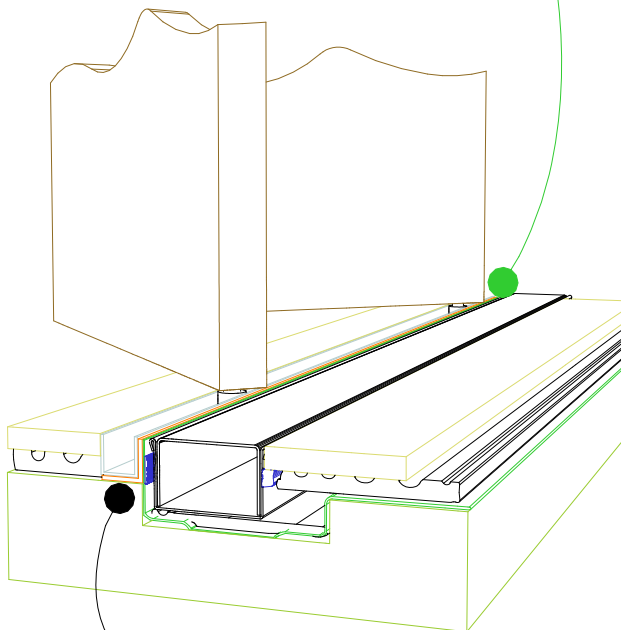
Top hung slider



Aluminium angle
to support waterproofing
and junction between channel
and door track.

For all types of threshold
installation ensure both sides
of the channel are sealed
before laying tile.

Bi-fold door



Aluminium angle
to support waterproofing
and junction between channel
and door track.

**NOTE, ALWAYS ensure the
waterproofing is completed
before laying the Stormtech.**

NOTE, ensure weather strip
is used on the appropriate
side of the door to ensure
drafts and moisture are
minimised.

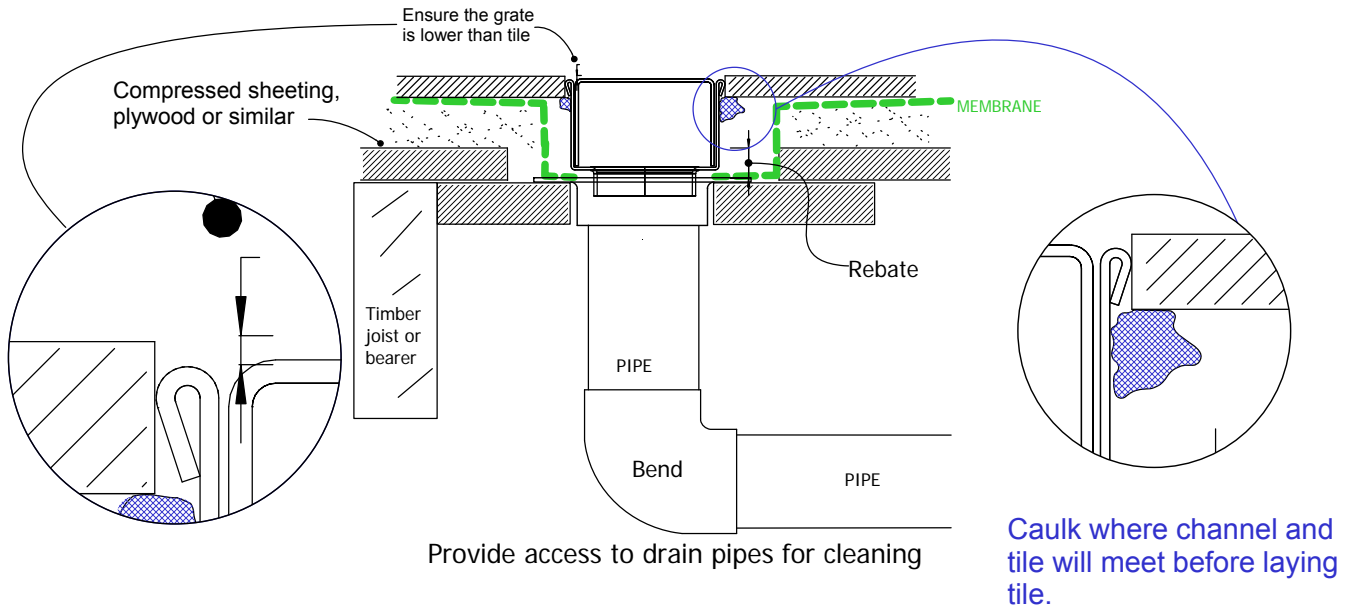


65i40MTL TIMBER FLOOR/DECK

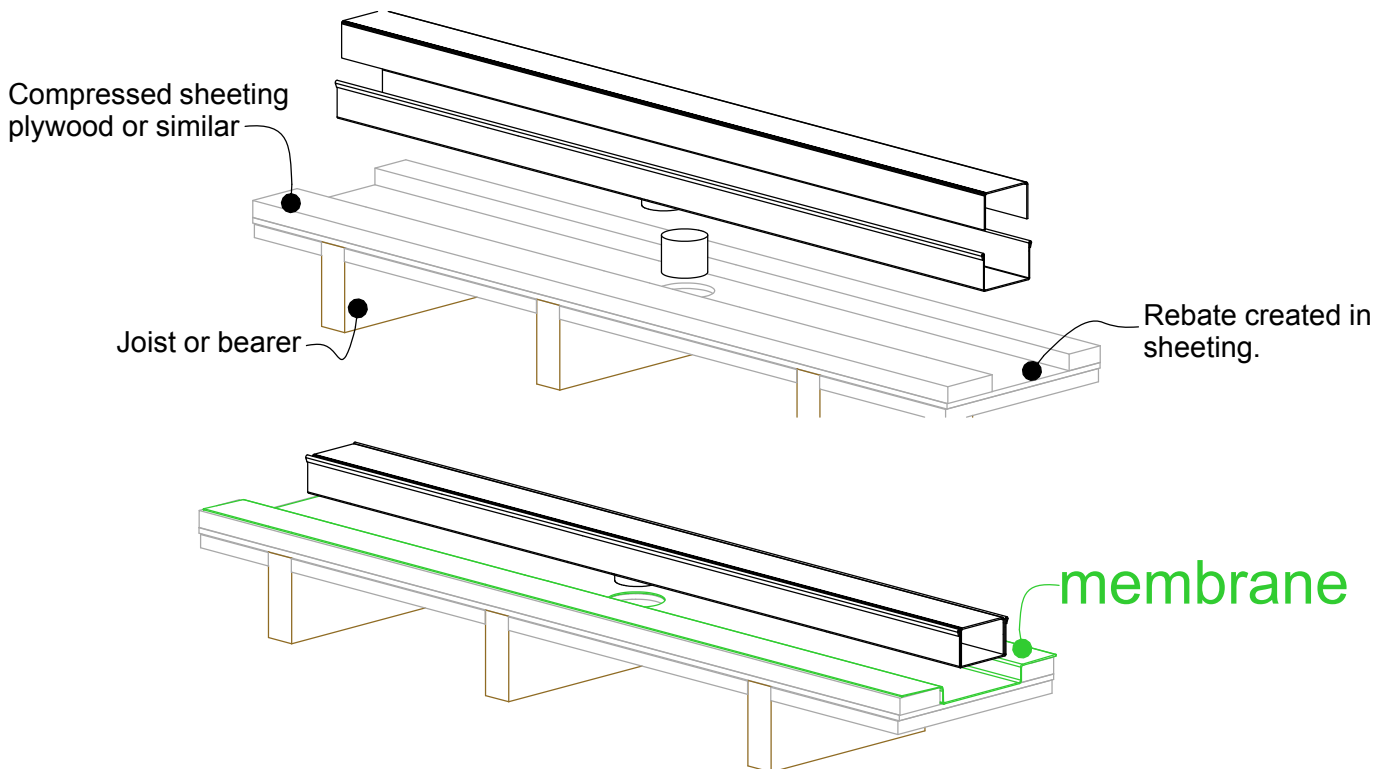
For 65ARi40MTL, 65PHi40MTL, 65PSi40MTL,
65TRi40MTL, 65Ti40MTL.



When 65i40MTL is running parallel to joist/bearer



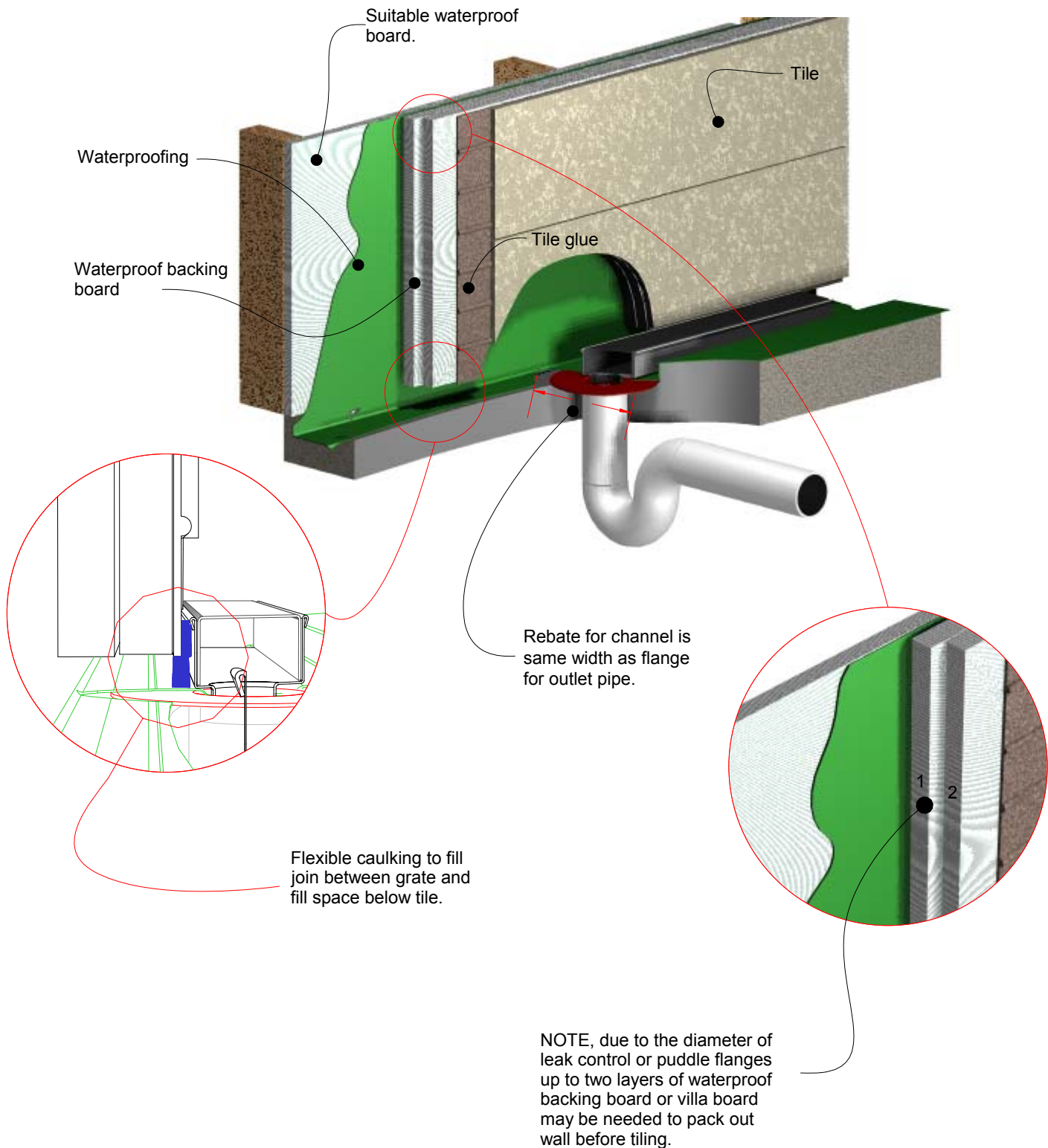
When 65i40MTL is running perpendicular to joist/bearer



NOTE: For exterior application allow for expansion of 1mm 3 metres by using quality suitable flexible sealant on channel joins.

65i40MTL Against Wall

For 65ARi40MTL, 65PHi40MTL, 65PSi40MTL, 65TRI40MTL, 65Tii40MTL.

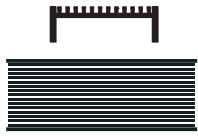


Order and Quote Form

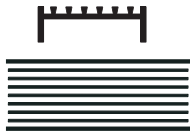
Made-to-Length Linear Drainage



Select Grate Style



☐ **AR Architectural**
2mm wire
2.5mm gap



☐ **TR Standard**
3mm wire
5mm gap



☐ **PS Punched Slot**



☐ **MND Marc Newson**



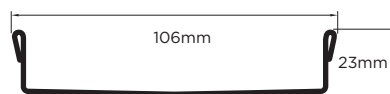
☐ **PAS Punched Angle Slot**



☐ **PPS Punched Perpendicular Slot**

Tray Profiles

100 Range

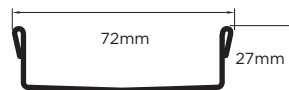


Profile 1

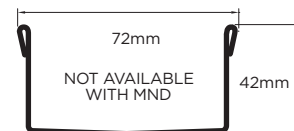


Profile 2

65 Range



Profile 3



Profile 4

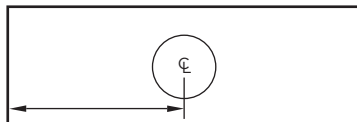
Specify Size, Outlet and Profile Required

Drain 1



Profile Required

☐ 1 ☐ 2 ☐ 3 ☐ 4



Outlet Size

☐ 38mm ☐ 44mm ☐ 51mm
☐ 63mm ☐ 76mm ☐ 89mm

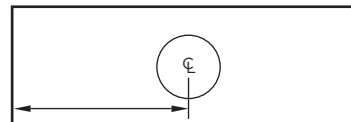


Drain 2



Profile Required

☐ 1 ☐ 2 ☐ 3 ☐ 4

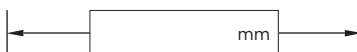


Outlet Size

☐ 38mm ☐ 44mm ☐ 51mm
☐ 63mm ☐ 76mm ☐ 89mm

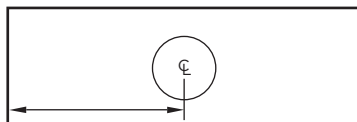


Drain 3



Profile Required

☐ 1 ☐ 2 ☐ 3 ☐ 4



Outlet Size

☐ 38mm ☐ 44mm ☐ 51mm
☐ 63mm ☐ 76mm ☐ 89mm



Please Note

See AS3500 standard & local regulator for specific outlet/drain requirements.
Outlet Size must be smaller than selected Range.
MND grate style not available with Profiles 2 or 4.
Stainless Steel Grade is 316 unless specified.
Fast 3 day dispatch is for single outlet drains, no longer than 3000mm.
Fast 5 day dispatch for drains with multiple outlets or over 3000mm.
Made-to-Length (MTL) minimum charge of 800mm.
Grates longer than 1500mm are supplied in multiple sections.
Channels are a maximum 3000mm in one piece, channels over 3000mm are supplied in multiple sections with joiner.
Orders received after 11am are processed as next working day.
+/- 2mm tolerance on dimensions.

Full Name

Company Name

Telephone

Email Address

Order Number

Stormtech Quote Number

Signature

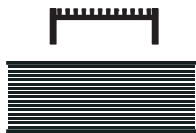
Order and Quote Form

Made-to-Length

Linear Drainage › Multiple Outlet



Select Grate Style



☐ **AR Architectural**
2mm wire
2.5mm gap



☐ **TR Standard**
3mm wire
5mm gap



☐ **PS Punched Slot**



☐ **MND Marc Newson**



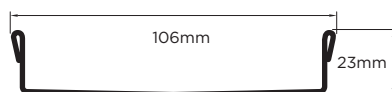
☐ **PAS Punched Angle Slot**



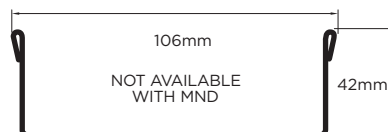
☐ **PPS Punched Perpendicular Slot**

Tray Profiles

100 Range

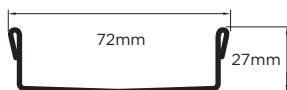


Profile 1

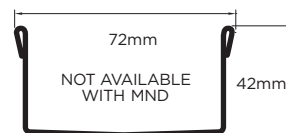


Profile 2

65 Range

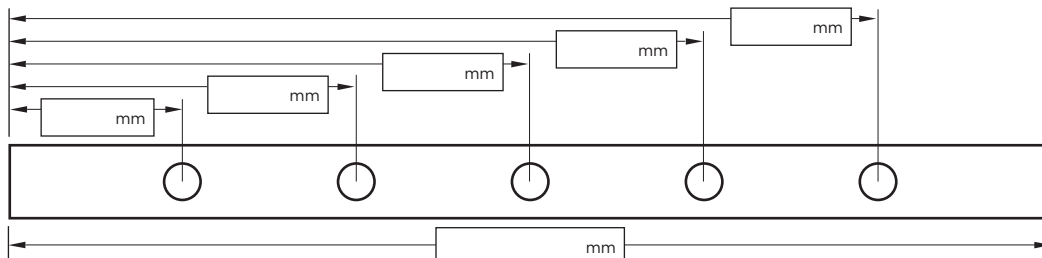


Profile 3



Profile 4

Specify Length, Outlet Positions/Size and Profile Required



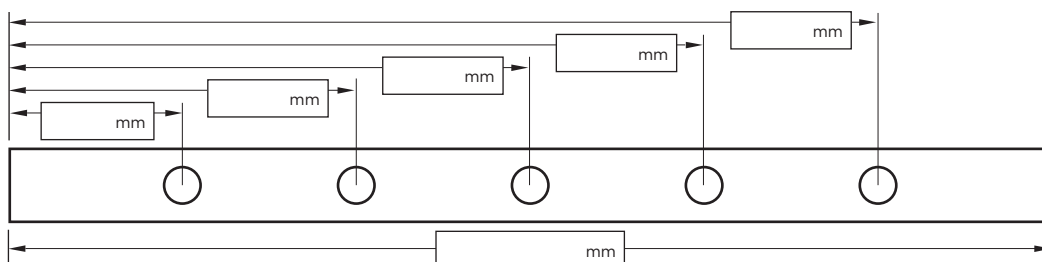
Drain 1

Profile Required

☐ 1 ☐ 2 ☐ 3 ☐ 4

Outlet Size

☐ 38mm ☐ 44mm ☐ 51mm
☐ 63mm ☐ 76mm ☐ 89mm



Drain 2

Profile Required

☐ 1 ☐ 2 ☐ 3 ☐ 4

Outlet Size

☐ 38mm ☐ 44mm ☐ 51mm
☐ 63mm ☐ 76mm ☐ 89mm

NOTE: See AS3500 standard & local regulator for specific outlet/drain requirements. Outlet Size must be smaller than selected Range. MND grate style not available with Profiles 2 or 4. Stainless Steel Grade is 316 unless specified. Made-to-Length (MTL) minimum charge of 800mm. Grates over 1500mm are supplied in multiple sections. Channels over 3000mm are supplied in multiple sections with joiner. Orders received after 11am are processed next working day. +/- 2mm tolerance on dimensions.

Full Name

Company Name

Telephone

Email Address

Order Number

Stormtech Quote Number

Signature

Visit **stormtech.com.au**



StormtechTM

22 Norfolk Avenue, South Nowra, NSW 2541 Australia

Phone 1300 653 403 Email info@stormtech.com.au

