

ARCHITECTURAL **GRATES + DRAINS**



65TRTDiS

Linear Drainage System

Stormtech is the only linear drainage system available with full
Greentag and Watermark certification across our complete product range.

Telephone 1300 653 403 | **Web** stormtech.com.au



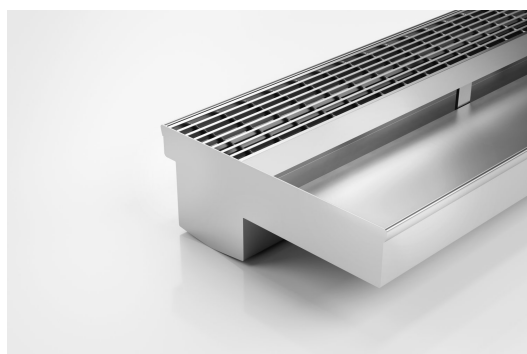


ARCHITECTURAL
GRATES + DRAINS



65TRTDiS

Linear Drainage System



The 65TRTDiS is a Threshold Drain for door track only applications featuring our 65mm wide standard grate.

For sliding and Hinged doors.

A threshold drain for sill usage only featuring a concealed channel section system with an integrated sill suitable for all door track types.

Code 65TRTDiS

Range Threshold

Grate Style TR

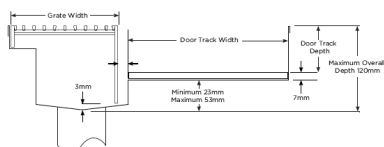
Category Made-to-Length

Channel Material Stainless Steel

Steel Grade 316

Allows door sills to be drained while having internal and external floor surfaces with no step down.

Please be aware that depending on the installation environment, for a pool installation or close to a surf beach, you may need to have your stainless steel grates electropolished.



Grates longer than 1500mm supplied in sections.
Tile Inserts longer than 1200mm supplied in sections.
Channels over 3000mm supplied in sections with joiner.
+/-2mm tolerance on dimensions.

SPECIFICATIONS + DIMENSIONS

Channel Width	70mm
Channel Depth	Adjustable
Length(s)	As Required
Outlet Size	N/A

STORMTECH COLOUR FINISHES



Electroplate finishes subject to natural variation with time and local environment. Factors such as pools/surf beaches may require electropolishing. Contact us for suitability.

PRODUCT APPLICATIONS

Aged / Health Care Drainage
Balcony Drainage
Commercial Drainage
Courtyard / Patio Drainage
Multi-Residential Drainage
Special Needs Drainage

Threshold Drainage
Suspended Slab Drainage



Visit **stormtech.com.au**
for tools + inspiration.

Copyright © Stormtech Pty Ltd. Patent 733361. Drawings not to scale, please use dimensions shown.

Phone **1300 653 403**

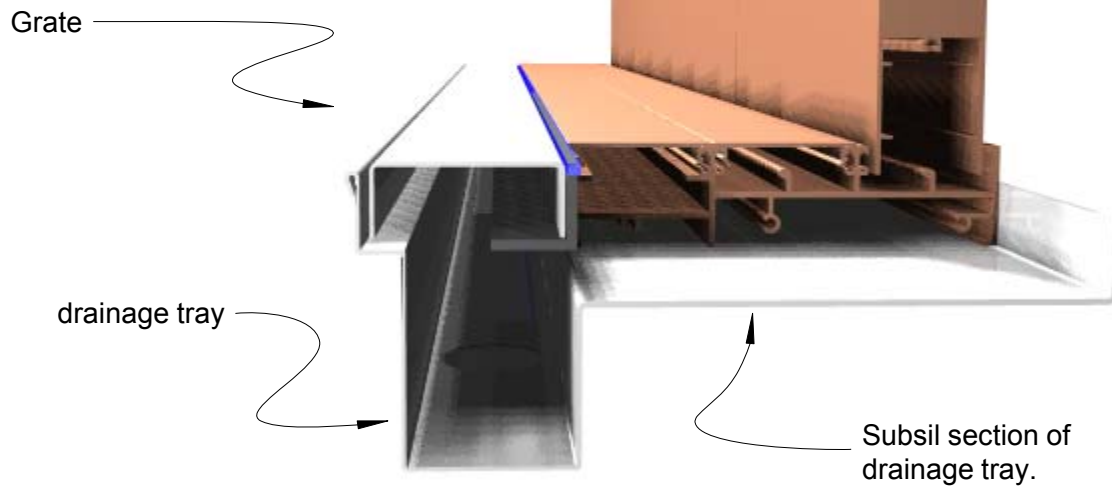
Email **info@stormtech.com.au**

65TDiS

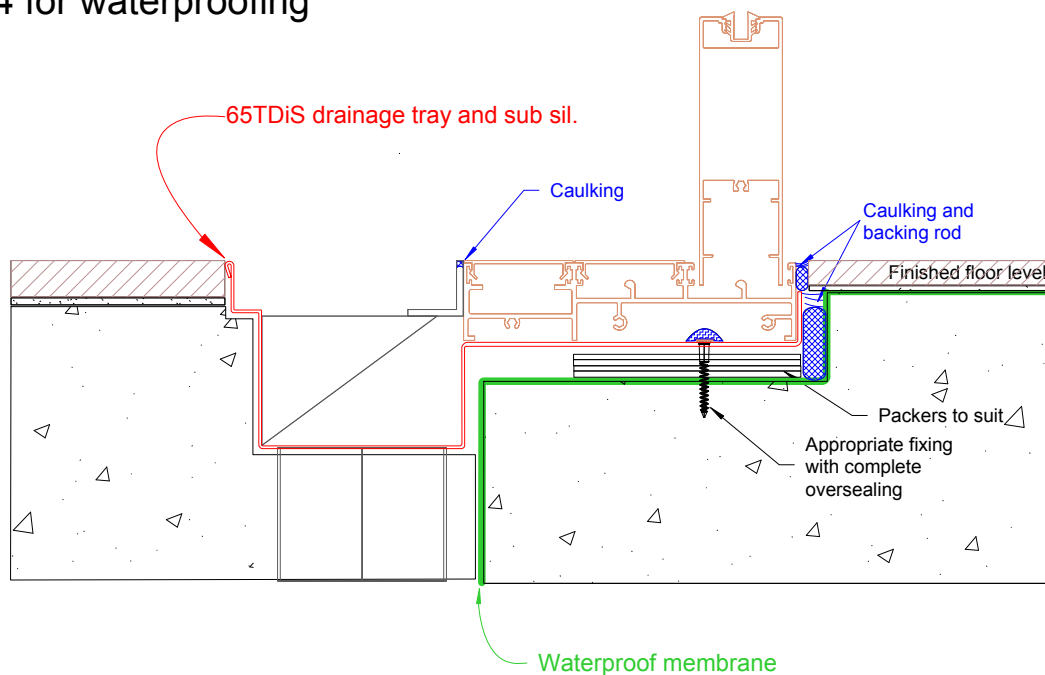
Linear threshold Drainage System



For 65ARTDiS, 65TRTDiS, and 65PSTDiS



- * The entire door track and 65TDiS are set in above and separate to waterproofing. Therefore waterproofing must be completed first.
- * The included sub-sil tray must be installed first as the door tracks are installed into tray of the 65TDiS.
- * Refer to;
AS1428 Design for Access and Mobility
AS4654 for waterproofing



Visit **stormtech.com.au**



StormtechTM

22 Norfolk Avenue, South Nowra, NSW 2541 Australia

Phone 1300 653 403 Email info@stormtech.com.au

