

ARCHITECTURAL **GRATES + DRAINS**



# 100TRi40MTL

## Linear Drainage System

Stormtech is the only linear drainage system available with full  
Greentag and Watermark certification across our complete product range.

**Telephone** 1300 653 403 | **Web** [stormtech.com.au](http://stormtech.com.au)





ARCHITECTURAL  
GRATES + DRAINS



# 100TRi40MTL

## Linear Drainage System



**Code** 100TRi40MTL

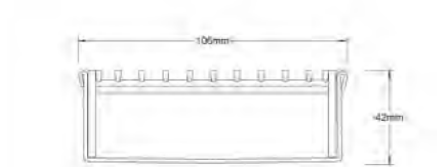
**Range** 100

**Grate Style** TR

**Category** Made-to-Length

**Channel Material** Stainless Steel

**Steel Grade** 316



Grates longer than 1500mm supplied in sections.  
Tile Inserts longer than 1200mm supplied in sections.  
Channels over 3000mm supplied in sections with joiner.

All stainless steel drainage unit made to specified length with specified outlet position.

The 100TR is our standard style grate featuring a 3mm/5mm wire gap.

Manufactured from 316 marine grade steel. Also available in 304 grade stainless steel on request.

Please note that our TR grates have a non finished finish.

Please be aware that depending on the installation environment, for a pool installation or close to a surf beach, you may need to have your stainless steel grates electropolished.

### SPECIFICATIONS + DIMENSIONS

Channel Width	106mm
Channel Depth	42mm
Length(s)	As Required
Outlet Size	DN40, DN50, DN65, DN80, DN100

### STORMTECH COLOUR FINISHES



Electroplate finishes subject to natural variation with time and local environment. Factors such as pools/surf beaches may require electropolishing. Contact us for suitability.

### PRODUCT APPLICATIONS

Bathroom Drainage	Hospitality Drainage
Aged / Health Care Drainage	Paved Area Drainage
Balcony Drainage	Shower Drainage
Commercial Drainage	Multi-Residential Drainage
Courtyard / Patio Drainage	Special Needs Drainage
Pool and Spa Area Drainage	Threshold Drainage

Copyright © Stormtech Pty Ltd. Patent 733361. Drawings not to scale, please use dimensions shown.



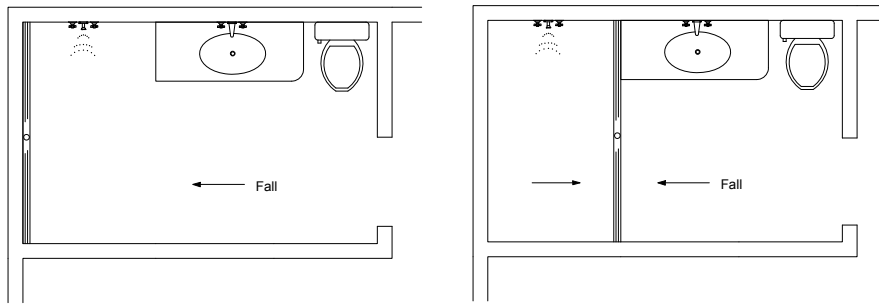
Visit **stormtech.com.au**  
for tools + inspiration.

Phone **1300 653 403**

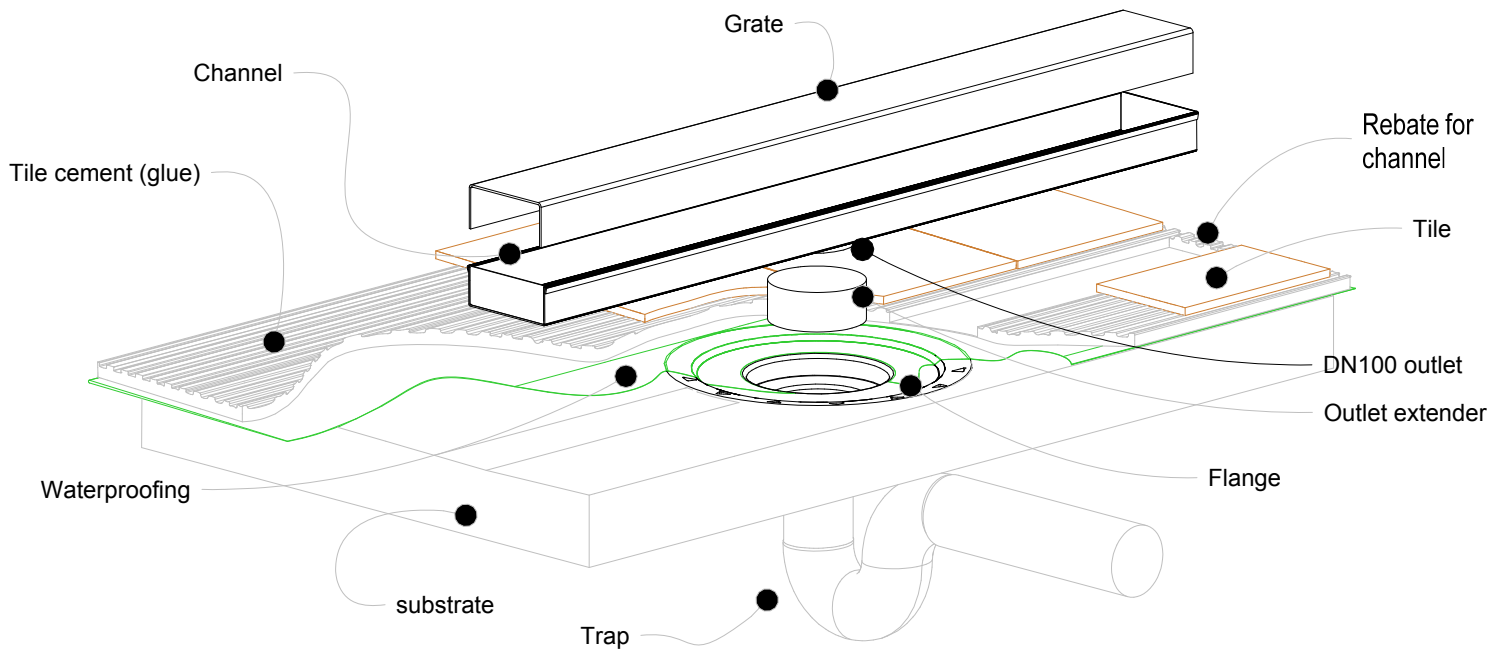
Email **info@stormtech.com.au**

# 100i40 Bathroom

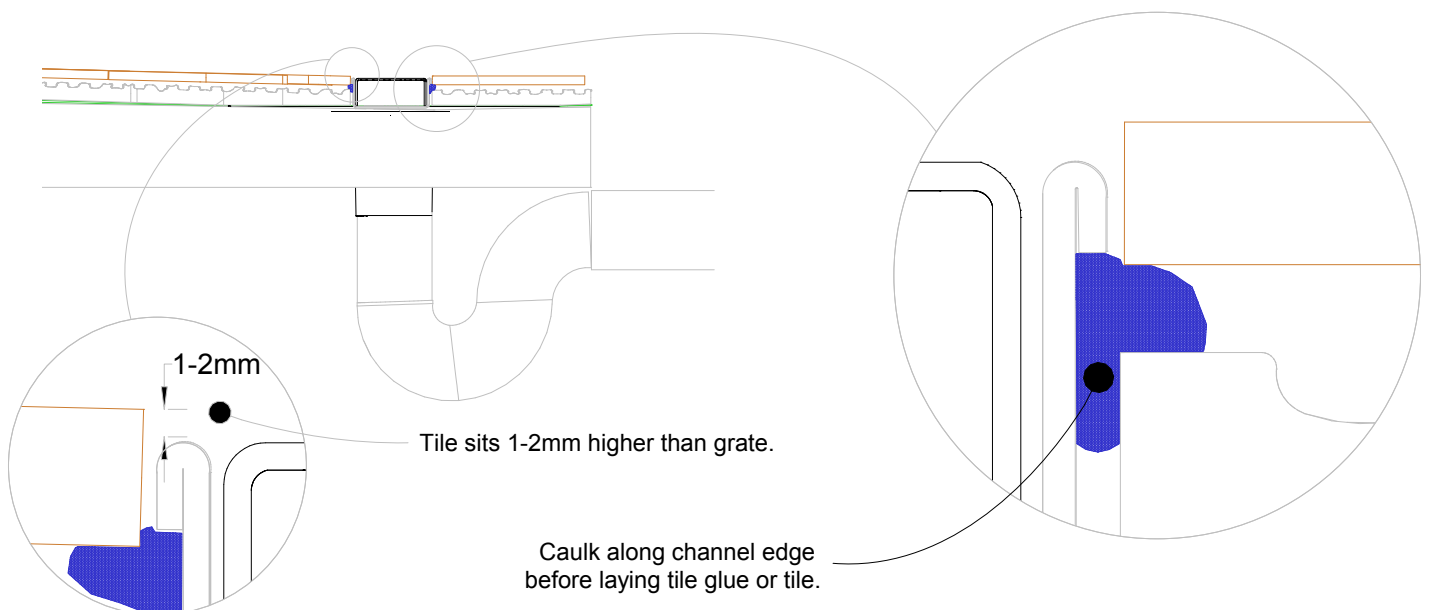
For 100ARi40, 100PSi40, 100TRi40



NOTE, refer to AS3500 for specific outlet pipe sizes related to your specific installation.



NOTE, this method requires the channel system to be ABOVE and SEPARATE from the WATERPROOFING.

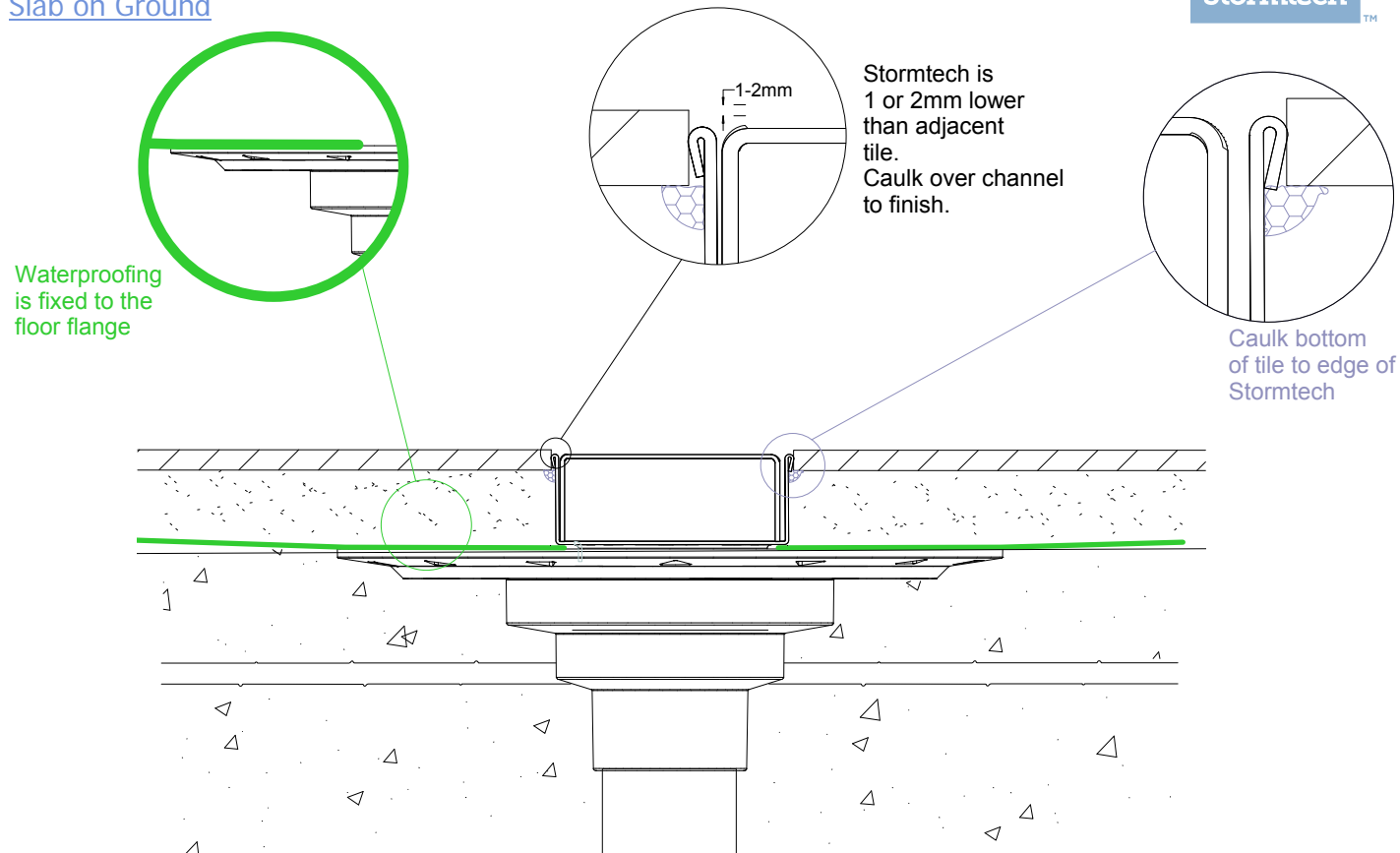


# 100i40 Concrete Floor or Deck

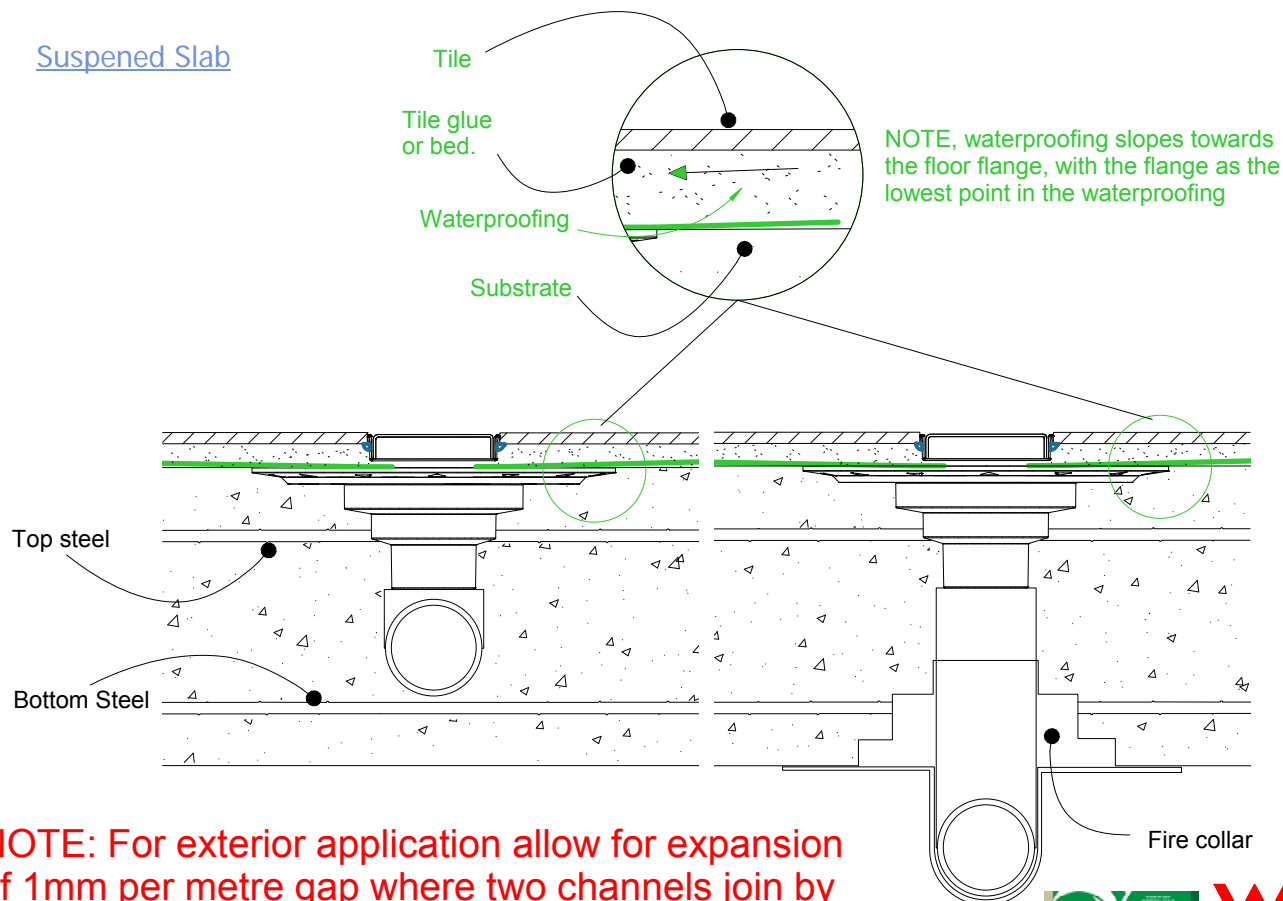
For 100ARi40, 100PSi40, 100TRi40



## Slab on Ground



## Suspended Slab



**NOTE: For exterior application allow for expansion of 1mm per metre gap where two channels join by using quality suitable flexible sealant on channel joiners.**

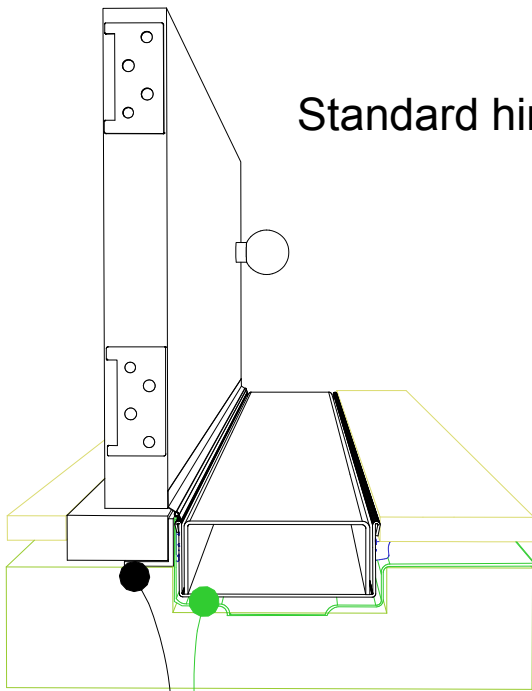


# 100i40 Threshold installation suggestion

For 100ARi40, 100PSi40, 100TRi40



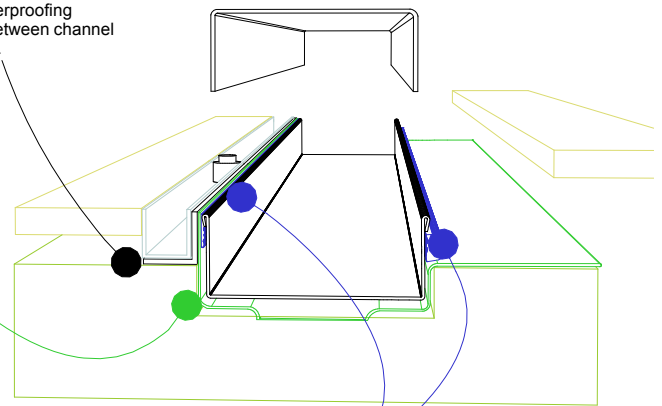
## Standard hinged door



Aluminium angle to support waterproofing and junction between channel and door sil.

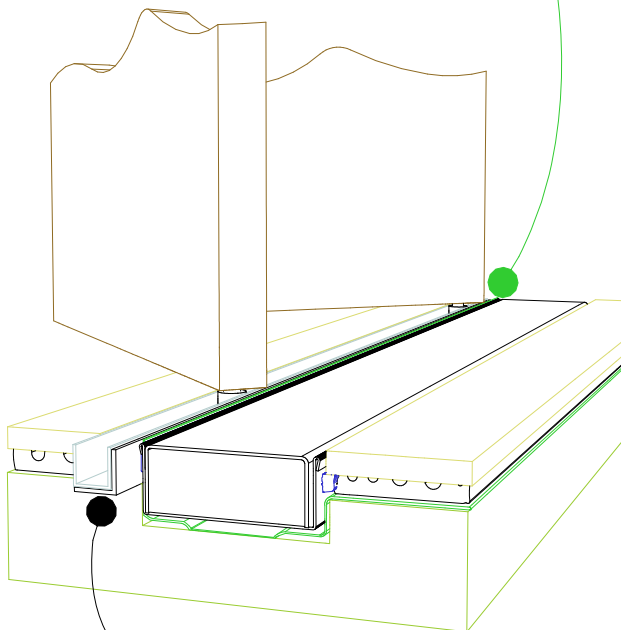
## Top hung slider

Aluminium angle to support waterproofing and junction between channel and door track.



## Waterproofing

## Bi-fold door



Aluminium angle to support waterproofing and junction between channel and door track.

For all types of threshold installation ensure both sides of the channel are sealed before laying tile.

NOTE, ensure weather stip is used on the appropriate side of the door to ensure drafts and moisture are minimised.

**NOTE, ALWAYS ensure the waterproofing is completed before laying the Stormtech.**

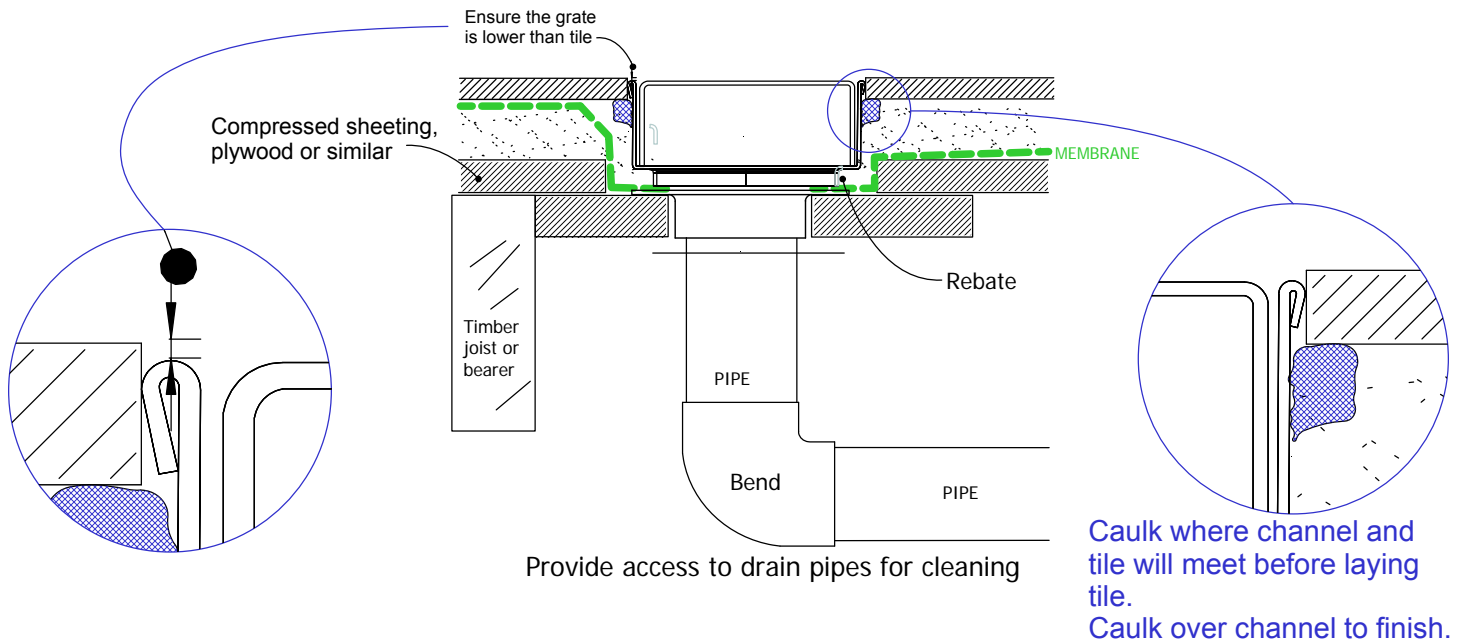


# 100i40 TIMBER FLOOR/DECK

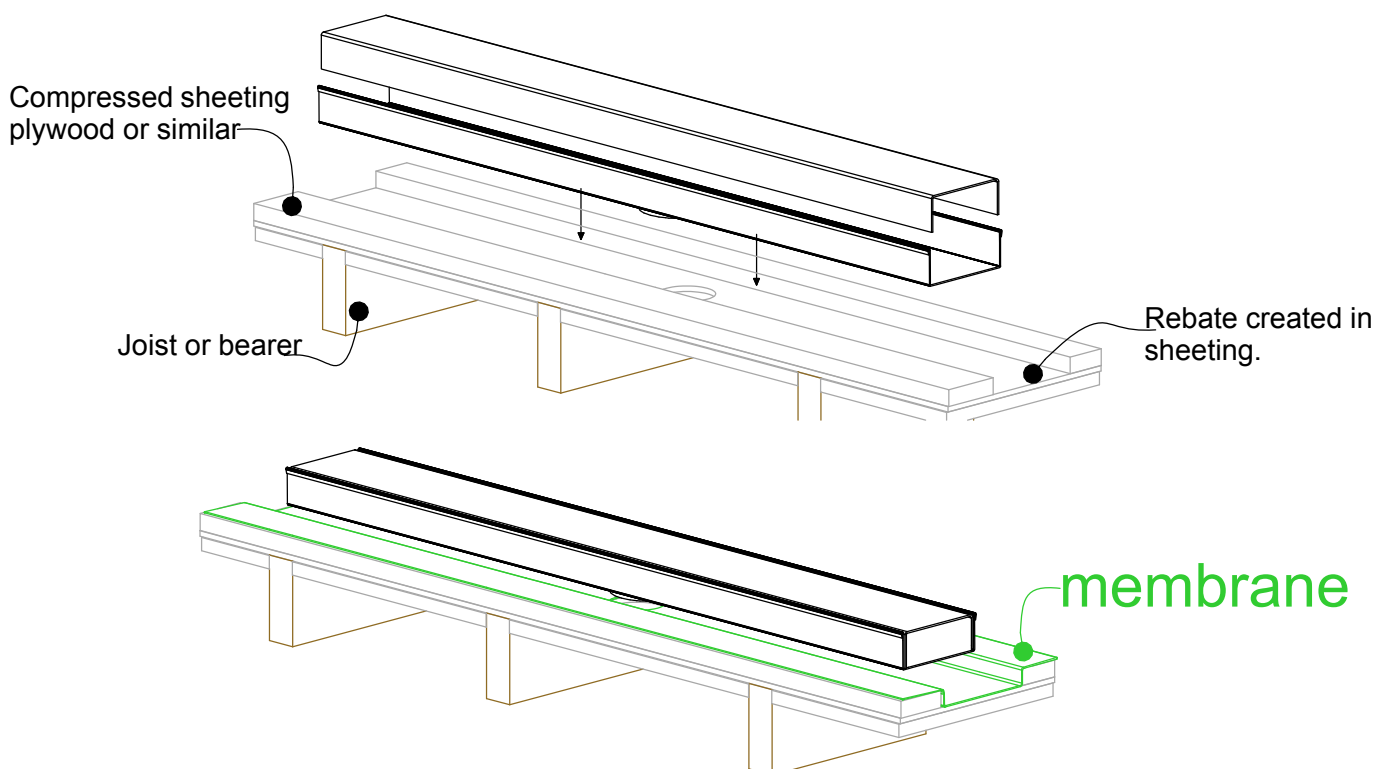
For 100ARi40, 100PSi40, 100TRi40



When 100i40 is running parallel to joist/bearer



When 100i40 is running perpendicular to joist/bearer

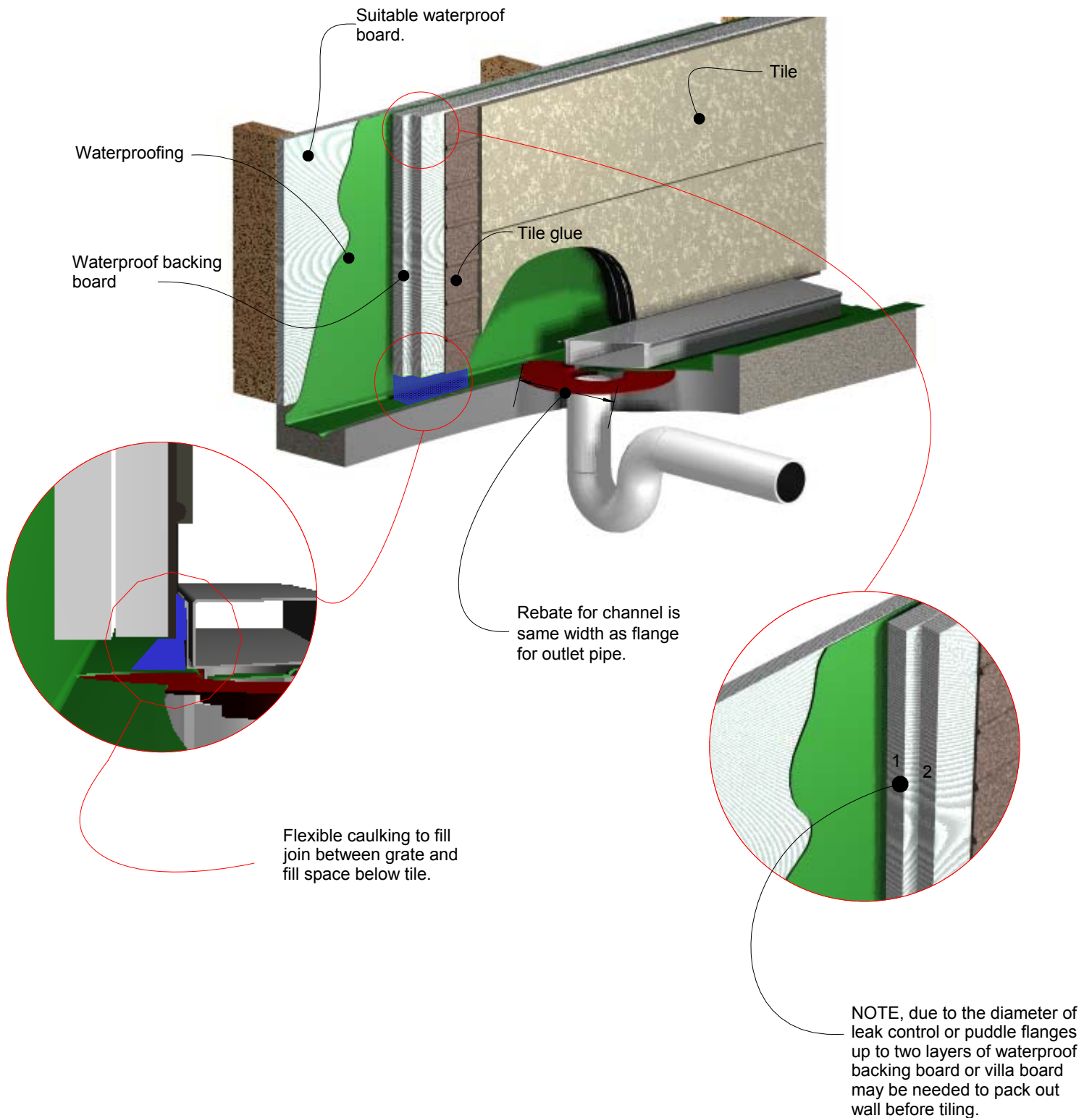


**NOTE: For exterior application allow for expansion of 1mm per metre by using quality suitable flexible sealant on channel joins.**



# 100i40 Against Wall

For 100ARi40, 100PSi40, 100TRi40

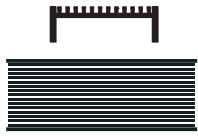


## Order and Quote Form

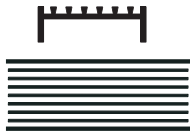
# Made-to-Length Linear Drainage



## Select Grate Style



☐ **AR Architectural**  
2mm wire  
2.5mm gap



☐ **TR Standard**  
3mm wire  
5mm gap



☐ **PS Punched Slot**



☐ **MND Marc Newson**



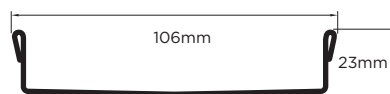
☐ **PAS Punched Angle Slot**



☐ **PPS Punched Perpendicular Slot**

## Tray Profiles

100 Range

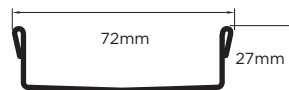


Profile 1

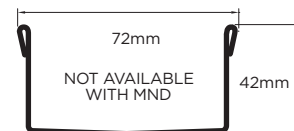


Profile 2

65 Range



Profile 3



Profile 4

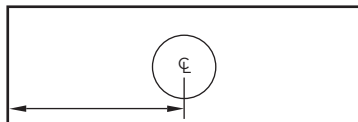
## Specify Size, Outlet and Profile Required

Drain 1



Profile Required

☐ 1 ☐ 2 ☐ 3 ☐ 4



Outlet Size

☐ 38mm ☐ 44mm ☐ 51mm  
☐ 63mm ☐ 76mm ☐ 89mm

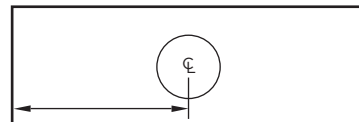


Drain 2



Profile Required

☐ 1 ☐ 2 ☐ 3 ☐ 4



Outlet Size

☐ 38mm ☐ 44mm ☐ 51mm  
☐ 63mm ☐ 76mm ☐ 89mm

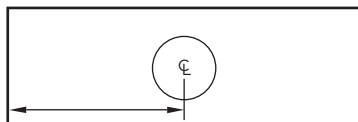


Drain 3



Profile Required

☐ 1 ☐ 2 ☐ 3 ☐ 4



Outlet Size

☐ 38mm ☐ 44mm ☐ 51mm  
☐ 63mm ☐ 76mm ☐ 89mm



### Please Note

See AS3500 standard & local regulator for specific outlet/drain requirements.  
Outlet Size must be smaller than selected Range.  
MND grate style not available with Profiles 2 or 4.  
Stainless Steel Grade is 316 unless specified.  
Fast 3 day dispatch is for single outlet drains, no longer than 3000mm.  
Fast 5 day dispatch for drains with multiple outlets or over 3000mm.  
Made-to-Length (MTL) minimum charge of 800mm.  
Grates longer than 1500mm are supplied in multiple sections.  
Channels are a maximum 3000mm in one piece, channels over 3000mm are supplied in multiple sections with joiner.  
Orders received after 11am are processed as next working day.  
+/- 2mm tolerance on dimensions.

Full Name

Company Name

Telephone

Email Address

Order Number

Stormtech Quote Number

Signature



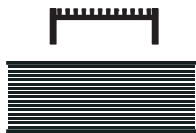
## Order and Quote Form

# Made-to-Length

## Linear Drainage › Multiple Outlet



## Select Grate Style



☐ **AR Architectural**  
2mm wire  
2.5mm gap



☐ **TR Standard**  
3mm wire  
5mm gap



☐ **PS Punched Slot**



☐ **MND Marc Newson**



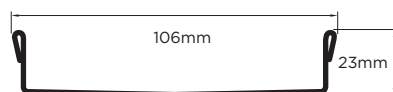
☐ **PAS Punched Angle Slot**



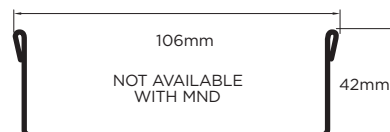
☐ **PPS Punched Perpendicular Slot**

## Tray Profiles

100 Range

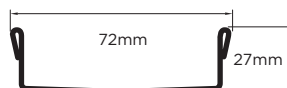


Profile 1



Profile 2

65 Range

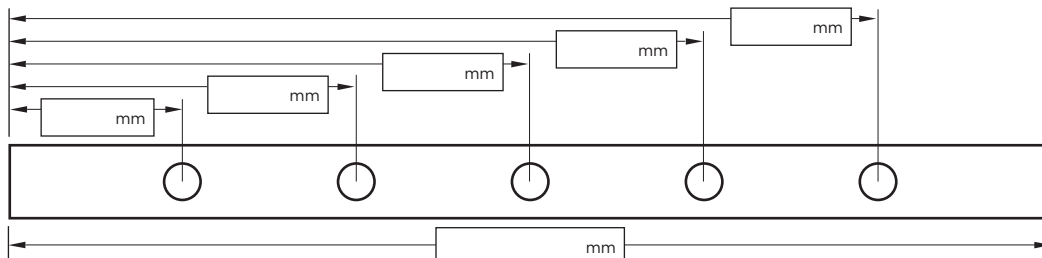


Profile 3



Profile 4

## Specify Length, Outlet Positions/Size and Profile Required



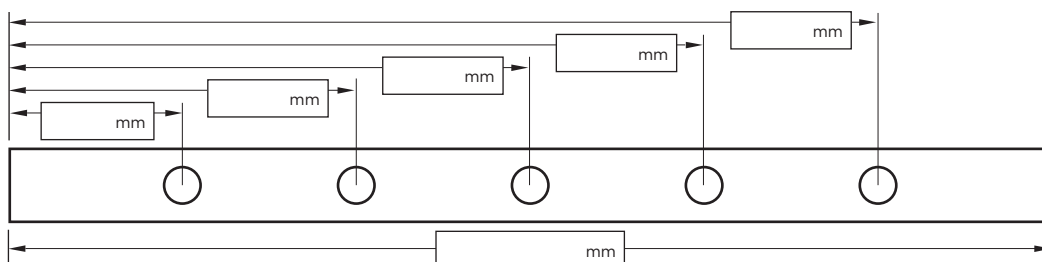
## Drain 1

## Profile Required

☐ 1 ☐ 2 ☐ 3 ☐ 4

## Outlet Size

☐ 38mm ☐ 44mm ☐ 51mm  
☐ 63mm ☐ 76mm ☐ 89mm



## Drain 2

## Profile Required

☐ 1 ☐ 2 ☐ 3 ☐ 4

## Outlet Size

☐ 38mm ☐ 44mm ☐ 51mm  
☐ 63mm ☐ 76mm ☐ 89mm

**NOTE:** See AS3500 standard & local regulator for specific outlet/drain requirements. Outlet Size must be smaller than selected Range. MND grate style not available with Profiles 2 or 4. Stainless Steel Grade is 316 unless specified. Made-to-Length (MTL) minimum charge of 800mm. Grates over 1500mm are supplied in multiple sections. Channels over 3000mm are supplied in multiple sections with joiner. Orders received after 11am are processed next working day. +/- 2mm tolerance on dimensions.

## Full Name

## Company Name

## Telephone

## Email Address

## Order Number

## Stormtech Quote Number

## Signature

Visit **stormtech.com.au**



**Stormtech**<sup>TM</sup>

22 Norfolk Avenue, South Nowra, NSW 2541 Australia

Phone 1300 653 403 Email [info@stormtech.com.au](mailto:info@stormtech.com.au)

